

BroadSoft Partner Configuration Guide

Gigaset N720

July 2017

Document Version 1.6

BroadWorks® Guide

Copyright Notice

Copyright© 2017 BroadSoft, Inc.

All rights reserved.

Any technical documentation that is made available by BroadSoft, Inc. is proprietary and confidential and is considered the copyrighted work of BroadSoft, Inc.

This publication is for distribution under BroadSoft non-disclosure agreement only. No part of this publication may be duplicated without the express written permission of BroadSoft, Inc., 9737 Washingtonian Boulevard, Suite 350, Gaithersburg, MD 20878.

BroadSoft reserves the right to make changes without prior notice.

Trademarks

Any product names mentioned in this document may be trademarks or registered trademarks of BroadSoft or their respective companies and are hereby acknowledged.

This document is printed in the United States of America.

Document Revision History

Version	Reason for Change
1.1	Introduced document for Gigaset N720 DECT IP PRO version 34 validation with BroadWorks Release 18.sp1.
1.2	Edited and published document.
1.3	Updated document with N720 DECT IP PRO version 70.105.00.000.00 validation with BroadWorks Release 22.0.
1.4	Edited changes and published document.
1.5	Updated document with device management support.
1.6	Edited changes and published document.

Table of Contents

1 Overview.....	6
2 Interoperability Status	7
2.1 Verified Versions.....	7
2.2 Interface Capabilities Supported.....	7
2.2.1 SIP Interface Capabilities	8
2.2.2 Other Interface Capabilities.....	12
2.3 Known Issues	14
3 BroadWorks Configuration.....	15
3.1 BroadWorks Device Profile Type Configuration	15
3.2 BroadWorks Configuration Steps	15
4 N720 Configuration	16
4.1 Configuration Method	16
4.2 System Level Configuration	17
4.2.1 Configure Network Settings	17
4.2.2 Configure SIP Interface Settings	20
4.2.3 Configure Service Settings.....	24
4.3 Subscriber Level Configuration.....	28
5 Device Management.....	31
5.1 Device Management Capabilities Supported	31
5.1 Device Management Configuration	32
5.1.1 Configure BroadWorks Tags	33
5.1.2 Configure BroadWorks Device Profile Type	35
5.1.3 Create Device Profile Instance	39
5.1.4 Configure BroadWorks User.....	40
5.1.5 Customize Tags.....	40
5.1.6 Configure Gigaset N720.....	41
Appendix A: Reference N720 Configuration Files.....	46
References	68

Table of Figures

Figure 1 Device Identity/Profile Type.....	15
Figure 2 Gigaset N720 – IP Configuration	19
Figure 3 Gigaset N720 – Security	20
Figure 4 Gigaset N720 – VoIP Providers	23
Figure 5 Gigaset N720 – Advanced VoIP Settings	25
Figure 6 Gigaset N720 – Welcome Page	26
Figure 7 Gigaset N720 – Local Settings	27
Figure 8 Ggiaset N720 – Date and Time	28
Figure 9 Gigaset N720 – SIP Account Data	30
Figure 10 System Default Tag Settings.....	34
Figure 11 Device Type-specific Tag Settings	34
Figure 12 Device Access FQDN.....	36
Figure 13 DM Advanced Options	37
Figure 14 <MAC Address>.xml File Settings	38
Figure 15 BroadWorks User Language Definition	39
Figure 16 Device Profile Instance	40
Figure 17 Login Screen.....	42
Figure 18 Firmware Update Screen	42
Figure 19 Security Settings Screen	43
Figure 20 Device Startup Provisioning Process Flow Chart	44

1 Overview

This guide describes the configuration procedures required for the Gigaset N720 DECT IP PRO phone for interoperability with BroadWorks.

The N720 is a DECT phone that uses the Session Initiation Protocol (SIP) to communicate with BroadWorks for call control.

This guide describes the specific configuration items that are important for use with BroadWorks. It does not describe the purpose and use of all configuration items on the N720. For those details, see the *Gigaset N720 DECT IP PRO Installation Guide* [\[1\]](#) supplied by Gigaset.

2 Interoperability Status

This section provides the known interoperability status of the Gigaset N720 DECT IP PRO with BroadWorks. This includes the version(s) tested, the capabilities supported, and known issues.

Interoperability testing validates that the device interfaces properly with BroadWorks via the SIP interface. Qualitative aspects of the device or device capabilities not affecting the SIP interface such as display features, performance, and audio qualities are not covered by interoperability testing. Requests for information and/or issues regarding these aspects should be directed to Gigaset.

2.1 Verified Versions

The following table identifies the verified Gigaset N720 DECT IP PRO and BroadWorks versions and the month/year the testing occurred. If the device has undergone more than one test cycle, versions for each test cycle are listed, with the most recent listed first.

Compatible Versions in the following table identify specific N720 versions that the partner has identified as compatible so should interface properly with BroadWorks. Generally, maintenance releases of the validated version are considered compatible and may not be specifically listed here. For any questions concerning maintenance and compatible releases, contact Gigaset.

NOTE: Interoperability testing is usually performed with the latest generally available (GA) device firmware/software and the latest GA BroadWorks release and service pack at the time the testing occurs. If there is a need to use a non-verified mix of BroadWorks and device software versions, customers can mitigate their risk by self-testing the combination themselves using the *BroadWorks SIP Phone Interoperability Test Plan* [\[5\]](#).

Verified Versions			
Date (mm/yyyy)	BroadWorks Release	N720 Verified Version	N720 Compatible Versions
05/2017	Release 22.0	70.105.00.000.00	Any maintenance revisions of the validated release.

2.2 Interface Capabilities Supported

This section identifies interface capabilities that have been verified through testing as supported by Gigaset N720 DECT IP PRO.

The *Supported* column in the tables in this section identifies the Gigaset N720 DECT IP PRO's support for each of the items covered in the test plan, with the following designations:

- Yes Test item is supported
- No Test item is not supported
- NA Test item is not applicable to the device type
- NT Test item was not tested

Caveats and clarifications are identified in the *Comments* column.

2.2.1 SIP Interface Capabilities

The Gigaset N720 DECT IP PRO has completed interoperability testing with BroadWorks using the *BroadWorks SIP Phone Interoperability Test Plan* [5]. The results are summarized in the following table.

The BroadWorks test plan is composed of packages, each covering distinct interoperability areas, such as “Basic” call scenarios and “Redundancy” scenarios. Each package is composed of one or more test items, which in turn are composed of one or more test cases. The test plan exercises the SIP interface between the device and BroadWorks with the intent to ensure interoperability sufficient to support the BroadWorks feature set.

NOTE: *DUT* in the following table refers to the *Device Under Test*, which in this case is the Gigaset N720 DECT IP PRO.

BroadWorks SIP Phone Interoperability Test Plan Support Table			
Test Plan Package	Test Plan Package Items	Supported	Comments
Basic	Call Origination	Yes	
	Call Termination	Yes	
	Session Audit	Yes	
	Session Timer	No	
	Ringback	Yes	
	Forked Dialog	Yes	
	181 Call Being Forwarded	Yes	
	Dial Plan	Yes	
	DTMF – Inband	No	
	DTMF – RFC 2833	Yes	
	DTMF – DTMF Relay	Yes	
	Codec Negotiation	Yes	
	Codec Renegotiation	Yes	
BroadWorks Services	Third-Party Call Control – Basic	Yes	
	Third-Party Call Control – Advanced	No	
	Voice Message Deposit/Retrieval	Yes	
	Message Waiting Indicator – Unsolicited	Yes	
	Message Waiting Indicator – Solicited	Yes	
	Message Waiting Indicator – Detail	Yes	
	Voice Portal Outcall	Yes	
	Advanced Alerting – Ringing	No	
	Advanced Alerting – Call Waiting	No	
	Advanced Alerting – Ring Splash	No	

BroadWorks SIP Phone Interoperability Test Plan Support Table			
Test Plan Package	Test Plan Package Items	Supported	Comments
	Advanced Alerting – Silent Alerting	No	
	Calling Line ID	Yes	
	Calling Line ID with Unicode Characters	Yes	
	Connected Line ID	No	
	Connected Line ID with Unicode Characters	No	
	Connected Line ID on UPDATE	No	
	Connected Line ID on Re-INVITE	No	
	Diversion Header	Yes	
	History-Info Header	Yes	
	Advice of Charge	No	
	Meet-Me Conferencing	Yes	
	Meet-Me Conferencing – G722	Yes	
	Meet-Me Conferencing – AMR-WB	No	
	Meet-Me Conferencing – Opus	No	
	Collaborate – Audio	Yes	
	Collaborate – Audio – G722	Yes	
	Collaborate – Audio – Opus	No	
	Call Decline Policy	Yes	
DUT Services – Call Control Services	Call Waiting	Yes	
	Call Hold	Yes	
	Call Transfer	Yes	Blind transfer not supported.
	Three-Way Calling	No	
	Network-Based Conference	No	
DUT Services – Registration and Authentication	Register Authentication	Yes	
	Maximum Registration	Yes	
	Minimum Registration	Yes	
	Invite Authentication	Yes	
	Re-Invite/Update Authentication	Yes	
	Refer Authentication	Yes	
	Device Authenticating BroadWorks	No	
DUT Services – Emergency Call	Emergency Call	No	
	Emergency Call with Ringback	No	
	REGISTER with P-Access-Network-Info Header	No	

BroadWorks SIP Phone Interoperability Test Plan Support Table			
Test Plan Package	Test Plan Package Items	Supported	Comments
DUT Services – P-Access-Network-Info Header	INVITE with P-Access-Network-Info Header	No	
DUT Services – Miscellaneous	Do Not Disturb	No	
	Call Forwarding Always	Yes	
	Call Forwarding Always Diversion Inhibitor	No	
	Anonymous Call	No	
	Anonymous Call Block	No	
	Remote Restart Via Notify	No	
Advanced Phone Services – Busy Lamp Field	Busy Lamp Field	No	
	Call Park Notification	No	
Advanced Phone Services – Feature Key Synchronization, Private Line	Do Not Disturb	No	
	Do Not Disturb Ring Splash	No	
	Call Forwarding	No	
	Call Forwarding Always Ring Splash	No	
	Call Forwarding Always Diversion Inhibitor	No	
	Call Center Agent Logon/Logoff	No	
	Call Center Agent Unavailable Code	No	
	Executive – Call Filtering	No	
	Executive-Assistant – Call Filtering	No	
	Executive-Assistant – Diversion	No	
	Call Recording	No	
	Security Classification	No	
Advanced Phone Services – Feature Key Synchronization, Shared Line	Do Not Disturb	No	
	Do Not Disturb Ring Splash	No	
	Call Forwarding	No	
	Call Forwarding Always Ring Splash	No	
	Call Forwarding Always Diversion Inhibitor	No	
	Security Classification	No	
Advanced Phone Services – Missed Calls Display Synchronization	Missed Calls Display Sync	No	
Advanced Phone Services – Shared Call Appearance using Call Info	Line-Seize	No	
	Call-Info/Lamp Management	No	
	Public Hold	No	
	Private Hold	No	

BroadWorks SIP Phone Interoperability Test Plan Support Table			
Test Plan Package	Test Plan Package Items	Supported	Comments
	Hybrid Key System	No	
	Multiple Call Arrangement	No	
	Bridge Active Line	No	
	Bridge Active Line – Silent Monitor	No	
	Call Park Notification	No	
Advanced Phone Services – Call Park Notification	Call Park Notification	No	
Advanced Phone Services – Call Center	Hold Reminder	No	
	Call Information	No	
	Hoteling Event	No	
	Status Event	No	
	Disposition Code	No	
	Emergency Escalation	No	
	Customer Originated Trace	No	
Advanced Phone Services – Call Recording Controls	Pause/Resume	No	
	Start/Stop	No	
	Record Local Conference	No	
	Record Network Conference	No	
Advanced Phone Services – Call Recording Video	Basic Call	No	
	Record Local Conference	No	
	Record Network Conference	No	
Advanced Phone Services – Security Classification	Security Classification	No	
Advanced Phone Services – Conference Event	Network-Based Conference Creator	No	
	Network-Based Conference Participant	No	
	Meet-Me Conference Participant	No	
Redundancy	DNS SRV Lookup	Yes	
	Register Failover/Failback	Yes	
	Invite Failover/Failback	No	
	Bye Failover	No	
SBC/ALG - Basic	Register	Yes	
	Outgoing Invite	Yes	
	Incoming Invite	Yes	
SBC/ALG – Failover/Failback	Register Failover/Failback	Yes	
	Invite Failover/Failback	No	

BroadWorks SIP Phone Interoperability Test Plan Support Table			
Test Plan Package	Test Plan Package Items	Supported	Comments
Video – Basic Video Calls	Call Origination	No	
	Call Termination	No	
	Call Hold	No	
	Call Waiting	No	
	Call Transfer	No	
Video – BroadWorks Video Services	Auto Attendant	No	
	Auto Attendant – HD	No	
	Voice Messaging	No	
	Voice Messaging – HD	No	
	Custom Ringback	No	
Video – BroadWorks Video Conference	Network-based Conference	No	
	Network-based Conference – HD	No	
	Collaborate – Video	No	
	Collaborate – Video – HD	No	
Video – BroadWorks WebRTC Client	Call from WebRTC Client	No	
	Call to WebRTC Client	No	
TCP	Register	Yes	
	Outgoing Invite	Yes	
	Incoming Invite	Yes	
IPV6	Call Origination	No	
	Call Termination	No	
	Session Audit	No	
	Ringback	No	
	Codec Negotiation/Renegotiation	No	
	Voice Message Deposit/Retrieval	No	
	Call Control	No	
	Registration with Authentication	No	
	Busy Lamp Field	No	
	Redundancy	No	
	SBC	No	
	Video	No	
	Dual Stack with Alternate Connectivity	No	

2.2.2 Other Interface Capabilities

The Gigaset N720 DECT IP PRO may have implemented support for the following:

- BroadWorks Xtended Services Interface (Xsi)
- Extensible Messaging and Presence Protocol (XMPP) (BroadCloud/BroadWorks Collaborate Instant Messaging and Presence [IM&P])

Support for these interfaces is demonstrated by completing the *BroadWorks SIP Phone Functional Test Plan* [6]. Support for these interfaces is summarized in the following table.

BroadWorks Xtended Services Interface (Xsi) and BroadCloud IM&P Support Table			
Interface	Feature	Supported	Comments
Xsi Features – Authentication	Authenticate with SIP Credentials	No	
	Authenticate with BroadWorks User Login Credentials	No	
	Authenticate with BroadWorks User Directory Number	No	
Xsi Features – User Service Configuration	Remote Office	No	
	BroadWorks Anywhere	No	
	Simultaneous Ringing	No	
	Caller ID Blocking	No	
	Call Forwarding Always	No	
	Call Forwarding Busy	No	
	Call Forwarding No Answer	No	
	Do Not Disturb	No	
Xsi Features – Directories	Enterprise Directory	No	
	Enterprise Common Phone List	No	
	Group Directory	No	
	Group Common Phone List	No	
	Personal Phone List	No	
	Search All Directories	No	
Xsi Features – Call Logs	Placed Calls	No	
	Received Calls	No	
	Missed Calls	No	
	All Calls	No	
	Sort by Name	No	
Xsi Features – Visual Voice Mail	View Messages	No	
	Listen to Audio Message	No	
	Watch Video Message	No	
	Mark Message Read/Unread	No	
	Delete Message	No	
	Mark All Messages Read/Unread	No	
XMPP Features – Contact/Buddy List	Contacts	No	
	Favorites	No	

BroadWorks Xtended Services Interface (Xsi) and BroadCloud IM&P Support Table

Interface	Feature	Supported	Comments
XMPP Features – Presence	Groups	No	
	Non-XMPP Contacts	No	
	Conferences	No	
	Login Invisible	No	
	Presence State	No	
	Presence Status	No	
	Contact's Presence State	No	

2.3 Known Issues

This section lists the known interoperability issues between BroadWorks and specific partner release(s). Issues identified during interoperability testing and known issues identified in the field are listed.

The following table provides a description of each issue and, where possible, identifies a workaround. The verified partner device versions are listed with an “X” indicating that the issue occurs in the specific release. The issues identified are device deficiencies or bugs, and are typically not BroadWorks release dependent.

The *Issue Number* is a tracking number for the issue. If it is a Gigaset issue, the issue number is from Gigaset's tracking system. If it is a BroadWorks issue, the issue number is from BroadSoft's tracking system.

For more information on any issues related to the particular partner device release, see the partner release notes.

Issue Number	Issue Description	Partner Version			
		V. 34	70.105.00.000.00		
1131	N720 is unable to negotiate to in-band DTMF if foreign device does not support RFC 2833. If N720 is configured to offer 2833 DTMF, but foreign device does not support 2833; instead of sending DTMF through in-band, N720 will still send DTMF through 2833. Workaround: Problem is fixed in version 36.	X			
1161	N720 is unable to respond to CODEC re-negotiation with a full list of supported CODECs. Unexpected call tear down during CODEC re-negotiation due to N720 is unable to provide a full list of support CODECs. Workaround: Problem is fixed in version 36.	X			

3 BroadWorks Configuration

This section identifies the required BroadWorks device profile type for the Gigaset N720 DECT IP PRO as well as any other unique BroadWorks configuration required for interoperability with the N720.

3.1 BroadWorks Device Profile Type Configuration

This section identifies the device profile type settings to use when deploying the Gigaset N720 DECT IP PRO with BroadWorks.

Create a device profile type for the Gigaset N720 DECT IP PRO with settings as shown in the following example. A separate device profile type should be created for each Gigaset N720 DECT IP PRO model. The settings shown are recommended for use when deploying the Gigaset N720 DECT IP PRO with BroadWorks. For an explanation of the profile parameters, see the *BroadWorks Device Management Configuration Guide* [2].



The screenshot shows the 'Identity/Device Profile Type Modify' page in the BroadWorks administration interface. The page title is 'Identity/Device Profile Type Modify' and it includes a 'Welcome Default Administrator' message. The page is divided into two main sections: 'Standard Options' and 'Advanced Options'. The 'Standard Options' section includes settings for 'Number of Ports' (Unlimited or Limited To 100), 'Ringback Tone/Early Media Support' (RTP - Session, RTP - Early Session, or Local Ringback - No Early Media), 'Authentication' (Enabled or Disabled), 'Hold Normalization' (Unspecified Address, Inactive, or RFC3204), and various capabilities like 'Registration Capable', 'Static Registration Capable', 'E164 Capable', 'Trusted', 'Authenticate REFER', 'Video Capable', and 'Use History Info Header'. The 'Advanced Options' section includes settings for 'Route Advance', 'Wireless Integration', 'PBX Integration', 'Add P-Called-Party-ID', 'Auto Configuration Soft Client', 'Requires BroadWorks Call Waiting Tone', 'Advice of Charge Capable', 'Support Emergency Disconnect Control', 'Enable Monitoring', 'Static Line/Port Ordering', 'Support Call Info Conference Subscription URI', 'Support Visual Device Management', 'Support Cause Parameter', 'Reset Event', 'Trunk Mode', 'Hold Announcement Method', 'Unscreend Presentation Identity Policy', and 'Web Based Configuration URL Extension'. The page also includes a 'Device Configuration Options' section at the bottom with settings for 'Not Supported', 'Device Management', and 'Legacy'.

Figure 1 Device Identity/Profile Type

3.2 BroadWorks Configuration Steps

There are no additional BroadWorks configurations required.

4 N720 Configuration

This section describes the configuration settings required for the N720 integration with BroadWorks, primarily focusing on the SIP interface configuration. The N720 configuration settings identified in this section have been derived and verified through interoperability testing with BroadWorks. For configuration details not covered in this section, see the *Gigaset N720 DECT IP PRO Installation Guide* [1] for N720.

4.1 Configuration Method

The Gigaset N720 DECT IP PRO can be configured with a configuration file using the Hypertext Transfer Protocol (HTTP/HTTPS). The different methods, which can be used for the provisioning of the Gigaset N720 DECT IP PRO is described in the document *Gigaset IP and IP-PRO Phones Provisioning/Remote Management and Parameter-list working general* [10].

The list of all the parameters, can be modified using a configuration file are contained in the document *Gigaset IP and IP-PRO Phones Provisioning/Remote Management and Parameter-list working general* [10].

Configuration Files

Gigaset N720 Configuration Files	Level	Description
<i>master.bin</i>	Static	Contains all the information about the firmware files, language files, and siu files for this device.
<i>baselines.bin</i>	Static	Contains all the information about the software version.
<i>version.bin</i>	Static	Web interface coded date and time. This is an optional file that can be used to determine if it is necessary to replace a possibly outdated web interface language file on the device.
<i>wl_xx.bin</i>	Static	Web interface language files: 02 = German, 09 = French, 10 = Netherlands, 07 = Italian, 04 = Spanish, 20 = Portuguese, 17 = Polish Note that "01" is optional, it can contain the English language, if required. However, this language is already implemented on the device and it is the only language that is fixed on the device.
<i>siu_444.bin</i>	Static	Contains all the information about the location of the configuration files and the naming used.
<i>MAC.xml</i> Example: <i>0004f2000fbb.xml</i>	Subscriber	Contains configurable parameters that apply to an individual device in a deployment. The naming can be different and it depends on the <i>siu_444.bin</i> file settings.

4.2 System Level Configuration

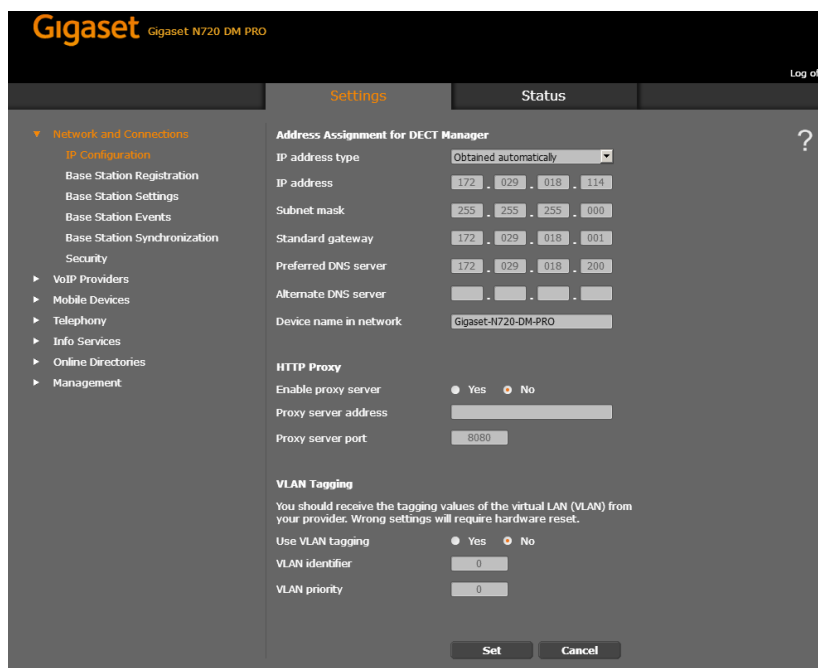
This section describes system-wide configuration items that are generally required for each N720 to work with BroadWorks. Subscriber-specific settings are described in the next section.

4.2.1 Configure Network Settings

Step	Command	Description
Step 1	Set the DHCP or static IP address. <pre><SYMB_ITEM ID="BS_IP_Data.ucB_USE_DHCP" class="symb_item" value="0x1"/></pre>	Enable or disable to retrieve the address from a DHCP server. DHCP enabled (Default) = 0x1 Static IP = 0x0
Step 2	Set the IP address. <pre><SYMB_ITEM ID="BS_IP_Data.ulI_IP" class="symb_item" value="0xc0a80202"/></pre>	This is the IPv4 address in hexadecimal format. Example: 192.168.2.2 → 0xC0A80202 192(C0)168(A8)2(02)2(02)
Step 3	Set the subnet mask. <pre><SYMB_ITEM ID="BS_IP_Data.ulI_SUBNET_MASK" class="symb_item" value="0xffffffff00"/></pre>	This is the IPv4 address in hexadecimal format. Example: 255.255.255.0 → 0xFFFFFFFF00 255(FF)255(FF)255(FF)0(00)
Step 4	Set the standard gateway. <pre><SYMB_ITEM ID="BS_IP_Data.ulI_DEFAULT_ROUTER" class="symb_item" value="0xc0a80201"/></pre>	This is the IPv4 address in hexadecimal format. Example: 192.168.2.1 → 0xC0A80201 192(C0)168(A8)2(02)1(01)
Step 5	Set the preferred DNS server. <pre><SYMB_ITEM ID="BS_IP_Data.ulI_DNS_SERVER_1" class="symb_item" value="0xc0a802fd"/></pre>	This is the IPv4 address in hexadecimal format. Example: 192.168.2.253 → 0xC0A802FD 192(C0)168(A8)2(02)253(FD)
Step 6	Set the alternate DNS server. <pre><SYMB_ITEM ID="BS_IP_Data.ulI_DNS_SERVER_2" class="symb_item" value="0xc0a802fe"/></pre>	This is the IPv4 address in hexadecimal format. Example: 192.168.2.1 → 0xC0A802FE 192(C0)168(A8)2(02)254(FE)
Step 7	Allow access from other networks. <pre><SYMB_ITEM ID="BS_IP_Data.ucB_ACCEPT_FOREIGN_SUBNET" class="symb_item" value="0x0"/></pre>	To authorize access from other networks, select "Yes". To disable remote access, select "No" (access is then limited to PCs in your local network). Allow access = 0x1 No access (Default) = 0x0
Step 8	Set the device name in the network. <pre><SYMB_ITEM ID="BS_IP_Data.aucS_NETWORK_DEVICE_NAME" class="symb_item" value="'N720-DM-PRO'"/></pre>	This is the <i>Device Name</i> in the <i>Network</i> field, maximum 20 characters (0-9, a-z, A-Z). The phone can be addressed with this name in the local network.

Step	Command	Description
Step 9	Set the HTTP proxy. <pre><SYMB_ITEM ID="BS_IP_Data.ucB_HTTP_PROXY ENABLED" class="symb_item" value="0x0"/></pre>	If the phone handles HTTP calls via the network's HTTP proxy server, then select "Yes". If you select "No", then the phone attempts to directly access the Internet. HTTP proxy disabled (Default) = 0x0 HTTP proxy enabled = 0x1
Step 10	Set the proxy server address. <pre><SYMB_ITEM ID="BS_IP_Data.aucS_HTTP_PROXY _URL" class="symb_item" value="'Proxy Server'"/></pre>	Enter the URL of the proxy server to which your phone is to send HTTP calls. The proxy server then creates the connection to the Internet.
Step 11	Set the proxy server port. <pre><SYMB_ITEM ID="BS_IP_Data.uiI_HTTP_PROXY_ PORT" class="symb_item" value="0x0"/></pre>	Enter the communication port used on the HTTP proxy server, (which is a number between 1 and 55000). Usually port 80 is used.
Step 12	Set VLAN tagging. <pre><SYMB_ITEM ID="BS_IP_Data.ucB_VLAN_ENABLE D" class="symb_item" value="0x0"/></pre>	Enable or disable VLAN tagging. VLAN disabled (Default) = 0x0 VLAN enabled = 0x1
Step 13	Set the VLAN ID. <pre><SYMB_ITEM ID="BS_IP_Data.uiI_VLAN_ID" class="symb_item" value="0x0"/></pre>	Enter the VLAN identifier. The numbers range from 0 through 4094 (12-bit values).
Step 14	Set the VLAN priority. <pre><SYMB_ITEM ID="BS_IP_Data.ucI_VLAN_PRIORI TY" class="symb_item" value="0x0"/></pre>	Enter the VLAN priority. The numbers range from 0 through 7 (3-bit values).

Browse to *Settings* → *Network and Connections* → *IP Configuration*.



The screenshot shows the Gigaset N720 DM PRO web interface. The top navigation bar includes the Gigaset logo, the model name 'Gigaset N720 DM PRO', and a 'Log off' link. Below the navigation bar are two tabs: 'Settings' (active) and 'Status'. The left sidebar contains a tree view with 'Network and Connections' expanded, showing sub-items like 'IP Configuration', 'Base Station Registration', 'Base Station Settings', 'Base Station Events', 'Base Station Synchronization', 'Security', 'VoIP Providers', 'Mobile Devices', 'Telephony', 'Info Services', 'Online Directories', and 'Management'. The main content area is titled 'Address Assignment for DECT Manager' and contains the following settings:

- IP address type:** Obtained automatically (dropdown menu)
- IP address:** 172 . 029 . 018 . 114
- Subnet mask:** 255 . 255 . 255 . 000
- Standard gateway:** 172 . 029 . 018 . 001
- Preferred DNS server:** 172 . 029 . 018 . 200
- Alternate DNS server:**
- Device name in network:** Gigaset-N720-DM-PRO
- HTTP Proxy:**
 - Enable proxy server:** ☒ Yes ☐ No
 - Proxy server address:** [empty text field]
 - Proxy server port:** 8080
- VLAN Tagging:**

You should receive the tagging values of the virtual LAN (VLAN) from your provider. Wrong settings will require hardware reset.

 - Use VLAN tagging:** ☒ Yes ☐ No
 - VLAN identifier:** 0
 - VLAN priority:** 0

At the bottom of the settings area are 'Set' and 'Cancel' buttons.

Figure 2 Gigaset N720 – IP Configuration

Browse to *Settings* → *Network and Connections* → *Security*.

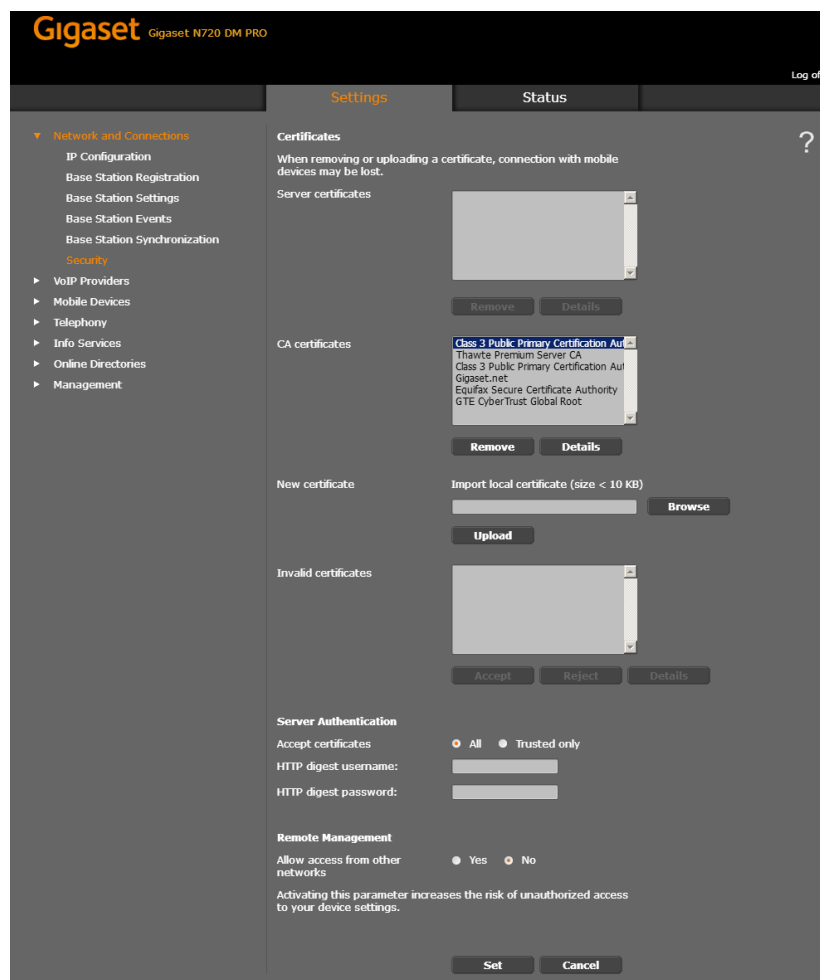


Figure 3 Gigaset N720 – Security

4.2.2 Configure SIP Interface Settings

Step	Command	Description
Step 1	Set connection name or number. <pre><SYMB_ITEM ID="BS_VOIP_Data.astVoipProviders[N].aucSIP_PROVIDER_NAME (N=0-9,% - all)" class="symb item" value="'Account1'"/></pre>	Enter a name for the IP account.
Step 2	Set the domain. <pre><SYMB_ITEM ID="BS_VOIP_Data.astVoipProviders[N].aucSIP_DOMAIN (N=0-9,% - all)" class="symb_item" value="'provider.com'"/></pre>	Specify the last part of the SIP address (URI), for example, for the SIP address "987654321@provider.com", enter "provider.com" under <i>Domain</i> .

Step	Command	Description
Step 3	Set the proxy server address <pre><SYMB_ITEM ID="BS_VOIP_Data.astVoipProviders[N].aucSIP_SERVER (N=0-9,% - all)" class="symb_item" value="myprovider.com"/></pre>	<p>The SIP proxy is your VoIP provider's gateway server. Enter the IP address or the DNS name (fully qualified domain name) of your SIP proxy server.</p> <p>Example: myprovider.com.</p>
Step 4	Set the proxy server port. <pre><SYMB_ITEM ID="BS_VOIP_Data.astVoipProviders[N].uiSIP_SERVER_PORT (N=0-9,% - all)" class="symb_item" value="5060"/></pre>	<p>Enter the number of the communication port that the SIP proxy uses to send and receive signaling data (SIP port).</p> <p>Port 5060 is used by most VoIP providers.</p>
Step 5	Set the registration server. <pre><SYMB_ITEM ID="BS_VOIP_Data.astVoipProviders[N].aucSIP_REGISTRAR (N=0-9,% - all)" class="symb_item" value="reg.myprovider.com"/></pre>	<p>Enter the DNS name (fully qualified domain name) or the IP address of the registrar server.</p> <p>The registrar is required when the phone is registered. It assigns the public IP address/port number that was used by the phone on registration to your SIP address (Username@Domain).</p> <p>With most VoIP providers, the registrar server is the same as the SIP server.</p> <p>Example: reg.myprovider.com.</p>
Step 6	Set the registration server port. <pre><SYMB_ITEM ID="BS_VOIP_Data.astVoipProviders[N].uiSIP_REGISTRAR_PORT (N=0-9,% - all)" class="symb_item" value="5060"/></pre>	<p>Enter the communication port used on the registrar.</p> <p>Port 5060 is used in most cases.</p>
Step 7	Set the registration refresh time. <pre><SYMB_ITEM ID="BS_VOIP_Data.astVoipProviders[N].uire_REGISTRATION_TIMER (N=0-9,% - all)" class="symb_item" value="180"/></pre>	<p>Enter the time interval (in seconds) whereby the phone repeats the registration with the VoIP server (SIP proxy). A request is sent to establish a session.</p> <p>The registration is repeated so that the phone's entry in the SIP proxy tables is retained and the phone can be reached. The registration is repeated for all enabled VoIP connections. The default is 180 seconds. If you enter 0 seconds, then the registration is not periodically repeated.</p>
Step 8	Set STUN. <pre><SYMB_ITEM ID="BS_VOIP_Data.astVoipProviders[N].ucSIP_USE_STUN (N=0-9,% - all)" class="symb_item" value="0x0"/></pre>	<p>If the phone to use STUN, select "Yes".</p> <p>Note that STUN can only be used if your router uses an asymmetric NAT and a non-blocking firewall.</p> <p>STUN disabled (default) = 0x0 STUN enabled = 0x1</p>
Step 9	Set the STUN server address. <pre><SYMB_ITEM ID="BS_VOIP_Data.astVoipProviders[N].aucSTUN_SERVER (N=0-9,% - all)" class="symb_item" value=""/></pre>	<p>Enter the DNS name (fully qualified domain name) or the IP address of the STUN server on the Internet (maximum 74 characters, 0-9, a-z, A-Z, -, _).</p> <p>The phone can determine its public address via the STUN. The phone requires this address to receive caller voice data.</p>

Step	Command	Description
Step 10	Set the STUN server port. <pre><SYMB_ITEM ID="BS_VOIP_Data.astVoipProvid ers[N].uiSTUN_SERVER_PORT (N=0-9,% - all)" class="symb_item" value="'3478'"/></pre>	Enter the number of the communication port on the STUN server. The default port is 3478.
Step 11	Set the STUN refresh time. <pre><SYMB_ITEM ID="BS_VOIP_Data.astVoipProvid ers[N].uiRE_STUN_TIMER (N=0- 9,% - all)" class="symb_item" value="'240'"/></pre>	Enter the time intervals at which the phone should repeat the registration with the STUN server. The registration must be repeated so that the entry of the phone in the STUN server tables is retained. The registration is repeated for all enabled VoIP connections. The default is 240 seconds. If you enter 0 seconds, the registration is not repeated periodically.
Step 12	Set NAT refresh time <pre><SYMB_ITEM ID="BS_VOIP_Data.astVoipProvid ers[N].uiNAT_REFRESH_TIME (N=0-9,% - all)" class="symb_item" value="0x14"/></pre>	Specify the intervals at which you want the phone to update its entry in the NAT routing table. Specify an interval in seconds that is a little less than the NAT session timeout.
Step 13	Set the outbound proxy mode. <pre><SYMB_ITEM ID="BS_VOIP_Data.astVoipProvid ers[N].ucOUTBOUND_PROXY_MODE (N=0-9,% - all)" class="symb_item" value="0x1"/></pre>	Specify when the outbound proxy should be used. All signaling and voice data is always sent by the phone to the outbound proxy. Automatic data sent by the phone is only sent to the outbound proxy when the phone is connected to a router with symmetric NAT or a blocking firewall. If the phone is behind an asymmetric NAT, then the STUN server is used. The outbound proxy is never used.
Step 14	Set the outbound server address. <pre><SYMB_ITEM ID="BS_VOIP_Data.astVoipProvid ers[N].aucOUTBOUND_PROXY (N=0- 9,% - all)" class="symb_item" value="''"/></pre>	Enter the DNS name (fully qualified domain name) or the IP address of your provider's outbound proxy.
Step 15	Set the outbound proxy port. <pre><SYMB_ITEM ID="BS_VOIP_Data.astVoipProvid ers[N].uiOUTBOUND_PROXY_PORT (N=0-9,% - all)" class="symb_item" value="'5060'"/></pre>	Enter the number of the communication port used by the outbound proxy. The default port is "5060".

Step	Command	Description
Step 16	Set the network protocol. <pre> <SYMB_ITEM ID="BS_VOIP_Data.astVoipProviders[%].ucSIP_PREFERRED_TRANSPORT_LAYER (N=0-9,% - all)" class="symb_item" value="0x0"/> </pre>	<p>The SIP server usually communicates using the User Datagram Protocol (UDP).</p> <p>Note that UDP does not guarantee reliable transmission, that is, the SIP server does not check whether messages have been successfully transferred. If you need reliable transmission, you can use the Transmission Control Protocol (TCP).</p> <p>Automatic – The protocol is defined automatically.</p> <p>UDP only – Communication occurs exclusively via UDP.</p> <p>TCP only – Communication occurs exclusively via TCP.</p> <p>Integer:</p> <p>0 = automatic</p> <p>6 = TCP only</p> <p>17 = UDP only</p>

Browse to *Settings* → *VoIP Providers* → *Edit*.

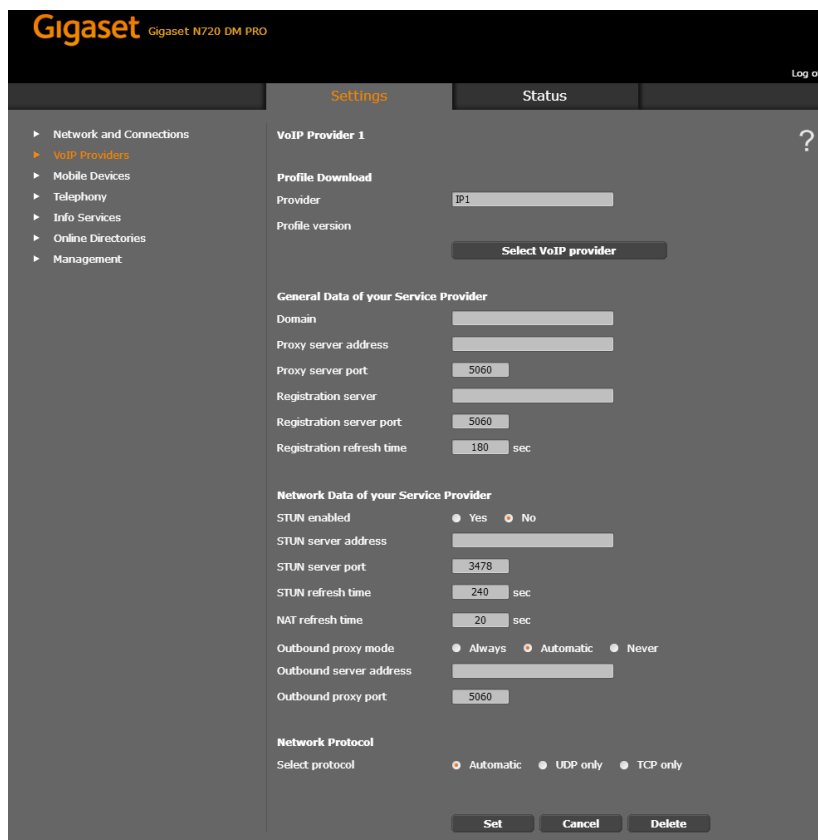


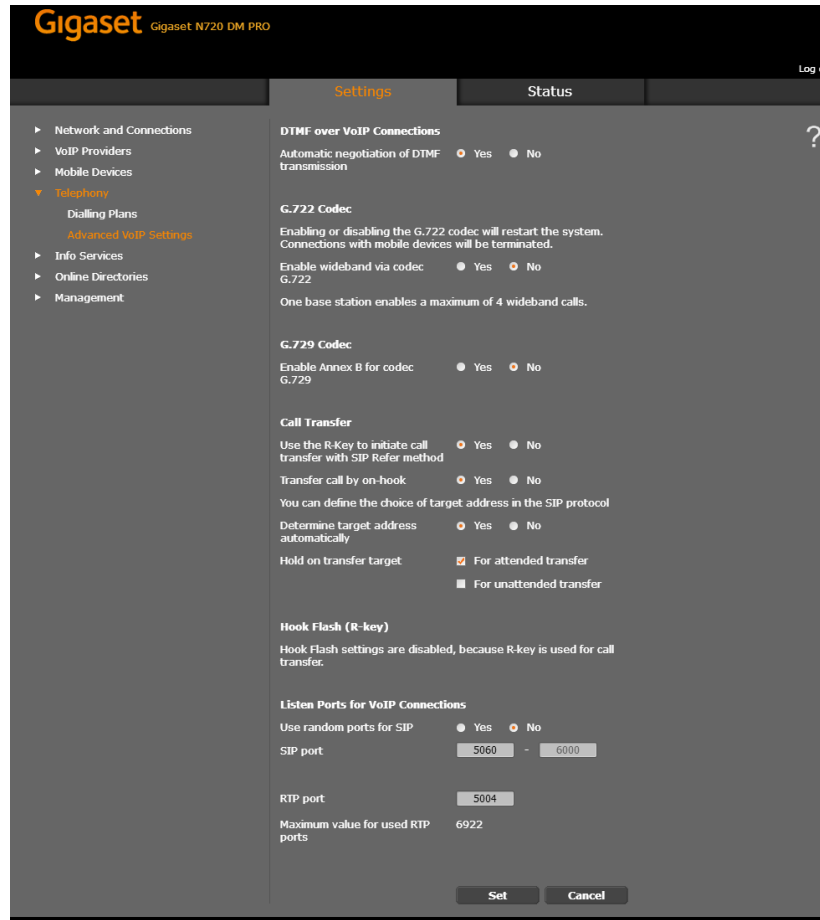
Figure 4 Gigaset N720 – VoIP Providers

4.2.3 Configure Service Settings

4.2.3.1 DTMF and Call Transfer Settings

Step	Command	Description
Step 1	Set the DTMF. <pre><SYMB_ITEM ID="BS_VOIP_Data.ucB_DTMF_TX_M ODE_AUTO" class="symb_item" value="0x1"/></pre>	If you select "Yes", then for each call, the phone attempts to set the appropriate DTMF signaling type for the codec currently being negotiated. If you select "No", then you can specify the DTMF signaling type explicitly.
Step 2	Set the DTMF type. <pre><SYMB_ITEM ID="BS_VOIP_Data.ucI_DTMF_TX_M ODE_BITS" class="symb_item" value="0x1"/></pre>	Enable <i>Audio</i> or <i>RFC 2833</i> if DTMF signals are to be transmitted acoustically (that is, in voice packets). Enable <i>SIP Info</i> if DTMF signals are to be transmitted as code. NOTE: Automatic negotiation for DTMF transmission must be set to "No". Integer: 1 = Audio 2 = RFC 2833 3 = Audio + RFC 2833 4 = SIP INFO 5 = Audio + SIP INFO 6 = RFC 2833 + SIP INFO 7 = Audio + RFC 2833 + SIP INFO
Step 3	Set transfer call by on-hook. <pre><SYMB_ITEM ID="BS_CUSTOM_ORG.bit.bEct" class="symb_item" value="0x1"/></pre>	If you select "Yes", then the external parties are connected when you replace the handset. Your connections with the parties are terminated. Yes (Default) = 0x1 No = 0x0

Browse to *Settings* → *Telephony* → *Advanced VoIP Settings*.



Gigaset Gigaset N720 DM PRO

Log off

Settings Status

- Network and Connections
- VoIP Providers
- Mobile Devices
- Telephony**
 - Dialling Plans
 - Advanced VoIP Settings**
 - Info Services
 - Online Directories
 - Management

DTMF over VoIP Connections

Automatic negotiation of DTMF transmission ☒ Yes ☐ No

G.722 Codec

Enabling or disabling the G.722 codec will restart the system. Connections with mobile devices will be terminated.

Enable wideband via codec ☐ Yes ☒ No

G.722

One base station enables a maximum of 4 wideband calls.

G.729 Codec

Enable Annex B for codec G.729 ☐ Yes ☒ No

Call Transfer

Use the R-Key to initiate call transfer with SIP Refer method ☒ Yes ☐ No

Transfer call by on-hook ☒ Yes ☐ No

You can define the choice of target address in the SIP protocol

Determine target address automatically ☒ Yes ☐ No

Hold on transfer target ☒ For attended transfer ☐ For unattended transfer

Hook Flash (R-key)

Hook Flash settings are disabled, because R-key is used for call transfer.

Listen Ports for VoIP Connections

Use random ports for SIP ☐ Yes ☒ No

SIP port 5060 - 6000

RTP port 5004

Maximum value for used RTP ports 6922

Set Cancel

Figure 5 Gigaset N720 – Advanced VoIP Settings

4.2.3.2 Device Language, Country Settings, and Ringtones

This section provides configuration instructions to configure a device to be used in the different countries.

- 1) Set the web interface language setting.

Step	Command	Description
Step 1	Set the language of the web interface. <pre><SYMB_ITEM ID="BS_IP_Data.ucI_HTTPLANGUAG E" class="symb_item" value="0x1"/></pre>	This is the HTTP language of the device, where: UK = 0x1, DE = 0x2, ES = 0x4, IT = 0x7, FR = 0x9, NL = 0xa, PL = 0x11, TR = 0x10 Some languages are stored on the device and others are downloaded from the Gigaset server. If a language cannot be found, then English is used.

Browse to the web interface *Welcome* page.

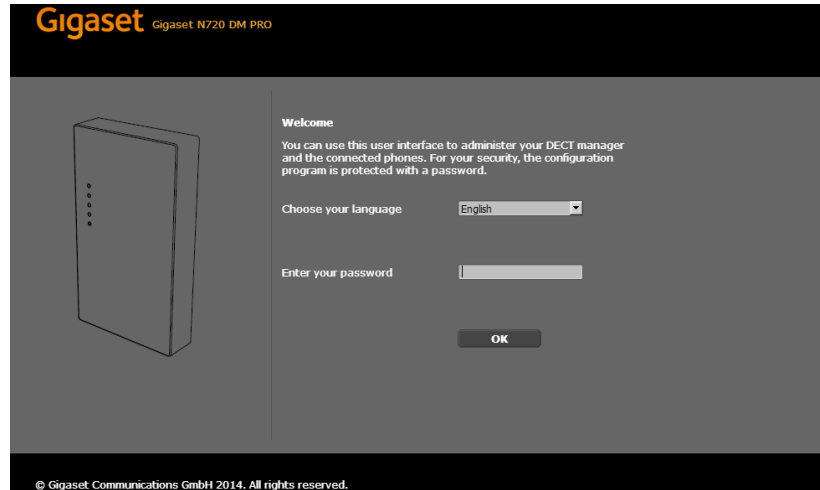


Figure 6 Gigaset N720 – Welcome Page

2) Set the local settings.

Step	Command	Description
Step 1	Select the country. <pre><SYMB_ITEM ID="BS_IP_Data.ucI_DIALING_PLA N_COUNTRY_ID" class="symb_item" value="0x19"/></pre>	Select the country in which you are using your phone, for example, "Germany". If your country is not included in the list, then select "Other Country" found at the end of the list. NL = 0x30, UK = 0x4A, DE = 0x19, FR = 0x18
Step 2	Set the tone selection. <pre><SYMB_ITEM ID="BS_AE_SwConfig.ucCountryCo deTone" class="symb_item" value="12"/></pre>	Tones such as dialing tones, call tones, busy tones, and call waiting tones are specific to a country or region. You can choose from various tone groups for your phone. The <i>Tone Selection</i> is automatically assigned according to the country selected in the previous step. However, you can change this setting. From the <i>Tone Selection</i> list, select the country or region to be used for your phone. International = 0, NL = 9, UK = 8, DE = 12, FR = 7

Browse to *Settings* → *Management* → *Local Settings*.

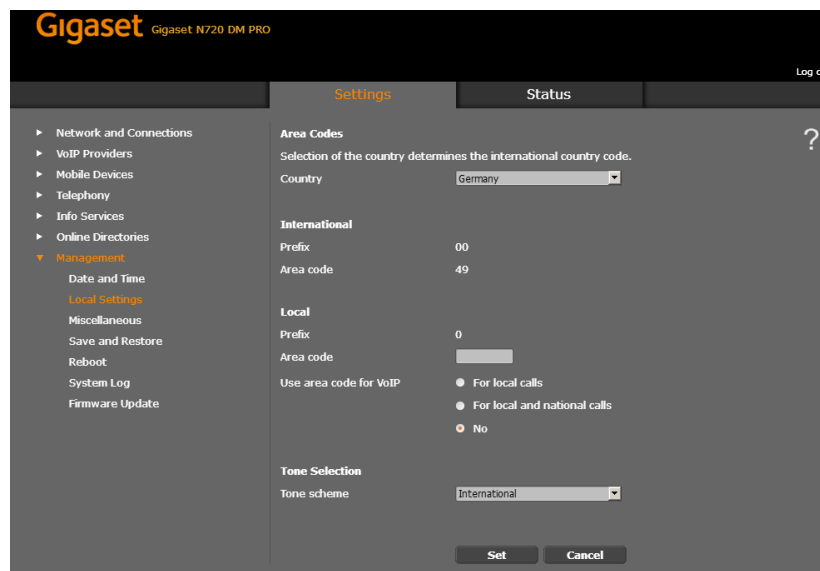


Figure 7 Gigaset N720 – Local Settings

3) Set the date and time.

Step	Command	Description
Step 1	Set the time server. <pre><SYMB_ITEM ID="BS_IP_Data.aucS_TIME_NTP_SERVER" class="symb_item" value="'europe.pool.ntp.org'"/></pre>	Enter the Internet address or DNS name of the time server from which the time and date settings should be copied (maximum 74 characters, 0-9, a-z, A-Z, -, .). The time server "europe.pool.ntp.org" is set by default. However, you can overwrite this setting.
Step 2	Set the time zone. <pre><SYMB_ITEM ID="BS_IP_Data.uiI_TIME_TIMEZONE" class="symb_item" value="0x1b"/></pre>	A list of the valid time zones appears. Each time zone shows the deviation between local time (not summer time) and Greenwich Mean Time (GMT). Select the appropriate time zone for the location of the phone from the list. NL = 0x1b, UK = 0x1a, DE = 0x1b, FR = 0x1b
Step 3	Set clock to adjust automatically. <pre><SYMB_ITEM ID="BS_IP_Data.ucB_TIME_USE_AUTOMATIC_DST" class="symb_item" value="0x1"/></pre>	Select "Yes" (default), if you want the time to change automatically to summer time or standard time when summer time begins and ends respectively. Select "No", if you do not want to automatically change to summer time.

Browse to *Settings* → *Management* → *Date and Time*.

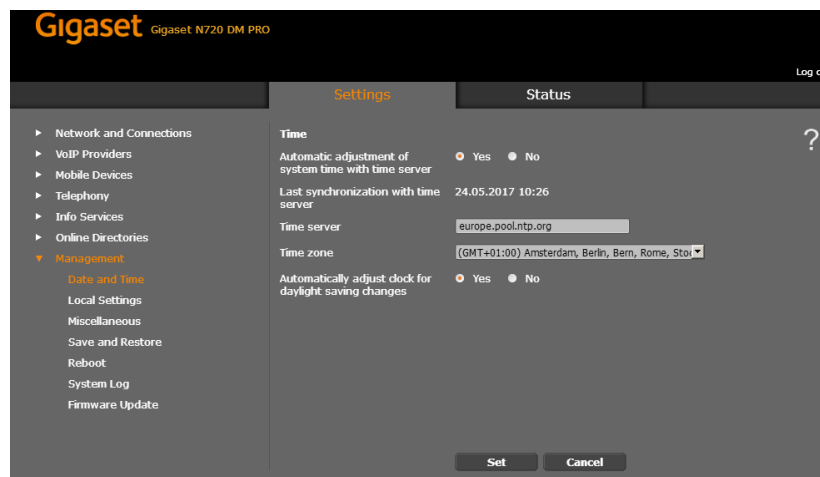


Figure 8 Ggiaset N720 – Date and Time

4.3 Subscriber Level Configuration

This section identifies the device-specific parameters, including registration and authentication. These settings must be unique across devices to be matched with the settings for a BroadWorks SIP trunk or subscriber. SIP Registration requires that a unique address of record (AoR) be provisioned on BroadWorks and the device.

Step	Command	Description
Step 1	Enable the SIP account. <pre><SYMB_ITEM ID="BS_VOIP_Data.astVoipAccounts[N].ucB_SIP_ACCOUNT_IS_ACTIVE_1 (N=0-99,% - all)" class="symb_item" value="0x1"/></pre>	Enable the SIP account.
Step 2	Set the authentication name. <pre><SYMB_ITEM ID=" BS_VOIP_Data.astVoipAccounts[N].aucS_SIP_LOGIN_ID (N=0-99, % - all)" class="symb_item" value="'Authentication name'"/></pre>	Specify the authentication name agreed with your VoIP provider. The authentication name acts as an access ID when registering with the SIP proxy/registrar server.
Step 3	Set the authentication password. <pre><SYMB_ITEM ID=" BS_VOIP_Data.astVoipAccounts[%].aucS_SIP_PASSWORD (N=0-99, % - all)" class="symb_item" value="'Password'"/></pre>	Enter the password that you have agreed with your VoIP provider. The phone requires the password when registering with the SIP proxy/registrar server.
Step 4	Set the user name. <pre><SYMB_ITEM ID=" BS_VOIP_Data.astVoipAccounts[%].aucS_SIP_USER_ID (N=0-99, % - all)" class="symb_item" value="'Username'"/></pre>	Enter the caller ID for your VoIP provider account (maximum 32 characters). The ID is usually the same as the phone number for this VoIP account.

Step	Command	Description
Step 5	Set the display name. <pre><SYMB_ITEM ID="BS_VOIP_Data.astVoipAccounts[%].aucS_SIP_DISPLAYNAME (N=0-99, % - all)" class="symb_item" value="'Display Name'"/></pre>	Enter the name that is shown on the other caller's display. All characters in the UTF8 character set (Unicode) are permitted.
Step 6	Set the VoIP provider for this account. <pre><SYMB_ITEM ID="BS_VOIP_Data.astVoipAccounts[N].ucVoipProviderIndex (N=0-99, % - all)" class="symb_item" value="'0'"/></pre>	Set index of the provider, used for this account. Possible values from 0 to (number of providers - 1).
Step 7	Set the voice mail box call number. <pre><SYMB_ITEM ID="BS_VOIP_Data.astVoipAccounts[N].aucS_VOIP_NET_AM_NUMBER_1 (N=0-99, % - all)" class="symb_item" value="''"/></pre>	For the VoIP connections, the maximum is 32 characters and/or digits (0-9, A-Z, a-z, *, #, R, P, -). Enter the BroadWorks voice mail number and name. The device subscribes to the Message service.
Step 8	Activate voice mail and MWI. <pre><SYMB_ITEM ID="BS_VOIP_Data.astVoipAccounts[N].ucB_VOIP_NET_AM_ENABLED 1 (N=0-99, % - all)" class="symb_item" value="0x0"/></pre>	You can enable or disable individual network mailboxes. Enable MWI = 0x1 Disable = 0x0

Browse to *Settings* → *Mobile Devices* → *Add/Edit*.

Gigaset Gigaset N720 DM PRO
Log off

	Settings	Status
<ul style="list-style-type: none"> ▶ Network and Connections ▶ VoIP Providers <li style="color: #007bff;">▶ Mobile Devices ▶ Telephony ▶ Info Services ▶ Online Directories ▶ Management 	<div style="text-align: right; color: #007bff; font-size: 24px;">?</div> <div style="margin-bottom: 10px;"> Mobile device 1 Mobile device registered Device type: SL750H PRO DECT user identity (IPU/IPEI): 02 9E 74 AE 4B Software version: 63 Deregister mobile device for this SIP connection: Deregister </div> <div> Personal Provider Data A separate SIP connection must be assigned to each handset. Authentication name: <input style="width: 100%;" type="text"/> Authentication password: <input style="width: 100%;" type="password"/> Username: <input style="width: 100%;" type="text"/> Display name: <input style="width: 100%;" type="text"/> Select VoIP provider: 1. IP1 Hide advanced settings </div> <div style="margin-top: 10px;"> Online Directories You can decide which directory will be opened by directory key and INT key on the handset. An online directory can be selected for automatic name search. Directory for direct access: Local directory Corporate directory for INT key: Deactivate Automatic look-up: Deactivate </div> <div style="margin-top: 10px;"> LDAP Authentication To authenticate mobile devices individually, activate this function in online directory settings. Use personal provider data (SIP): <input type="checkbox"/> Username: <input style="width: 100%;" type="text"/> Password: <input style="width: 100%;" type="password"/> </div> <div style="margin-top: 10px;"> Network Mailbox Configuration Call number or SIP name (URI): <input style="width: 100%;" type="text"/> Activate network mailbox: <input checked="" type="radio"/> Yes <input type="radio"/> No </div>	

Figure 9 Gigaset N720 – SIP Account Data

5 Device Management

The BroadWorks Device Management feature provides the capability to automate generation of device configuration files to support mass deployment of devices. This section identifies the Device Management capabilities supported by the Gigaset N720 and the configuration steps required. For Device Management configuration details not covered here, see the *BroadWorks Device Management Configuration Guide* [2] and the *BroadWorks CPE Kit Usage Guide* [8].

5.1 Device Management Capabilities Supported

The Gigaset N720 has completed Device Management interoperability testing with BroadWorks using the *BroadWorks Device Management Interoperability Test Plan* [7]. The results are summarized in the following table.

The BroadWorks test plan is composed of packages, each covering distinct interoperability areas. Each package is composed of one or more test items, which in turn, are composed of one or more test cases. The test plan exercises the Device Management interface between the device and BroadWorks with the intent to ensure interoperability.

The *Supported* column in the following table identifies the Gigaset N720's support for each of the items covered in the test plan packages, with the following designations:

- Yes Test item is supported
- No Test item is not supported
- NA Test item is not applicable
- NT Test item was not tested

Caveats and clarifications are identified in the *Comments* column.

NOTE: *DUT* in the following table refers to the *Device Under Test*, which in this case is the Gigaset N720.

BroadWorks Device Management Interoperability Test Plan Support Table

Test Plan Package	Test Plan Package Items	Supported	Comments
HTTP File Download	HTTP Download Using XSP IP Address	Yes	
	HTTP Download Using XSP FQDN	Yes	
	HTTP Download Using XSP Cluster FQDN	Yes	
	HTTP Download With Double Slash	Yes	
HTTPS File Download	HTTPS Download Using XSP IP Address	NT	
	HTTPS Download Using XSP FQDN	Yes	
	HTTPS Download Using XSP Cluster FQDN	Yes	
HTTPS File Download with	HTTPS Download with Client Authentication Using XSP FQDN	No	

BroadWorks Device Management Interoperability Test Plan Support Table			
Test Plan Package	Test Plan Package Items	Supported	Comments
Client Authentication	HTTPS Download with Client Authentication Using XSP Cluster FQDN	No	
Time Zone Mapping	Inspect Time Zone Setting	Yes	
Language Mapping	Inspect Language Setting	Yes	
File Inspection	Inspect System Config File	No	
	Inspect Device-Specific Config File	Yes	
	Inspect Other Config Files	No	
	Inspect Static Files	No	
Device Inspection	Inspect SIP Settings	Yes	
	Inspect Line Settings	Yes	
	Inspect Service Settings	No	
HTTP File Upload	HTTP Upload Using XSP IP Address	No	
	HTTP Upload Using XSP FQDN	No	
	HTTP Upload Using XSP Cluster FQDN	No	
Call Processing Sanity Tests	Register with Authentication	Yes	
	Call Origination	Yes	
	Call Termination	Yes	
	Remote Restart	No	
	Shared Line Origination	No	
	Shared Line Termination	No	
	Shared Line Status	No	
	Busy Lamp Field	No	
	Network-Based Conference	No	
Flexible Seating	Association via Voice Portal	No	
	Association via Phone	No	
No Touch Provisioning	Provision via DHCP Options Field	No	
	No Touch Provision via DM redirect	No	
	No Touch Provision via Vendor redirect	Yes	

5.1 Device Management Configuration

This section identifies the steps required to enable the Gigaset N720 for device management. For Device Management configuration details not covered here, see the *BroadWorks Device Management Configuration Guide* [2] and the *BroadWorks CPE Kit Usage Guide* [8].

5.1.1 Configure BroadWorks Tags

The template files in Device Management use tags to represent the data stored on BroadWorks. When a configuration changes for a user, Device Management parses the template files and replaces the Device Management tags with the associated data stored on BroadWorks. There are default tags defined in the Device Management software and there are custom tags that the service provider can create and define via the web portal for use by Device Management. There are two types of custom tags that can be defined: system-default tags that are common to all devices on the system and device type-specific tags that are common to Gigaset device models only.

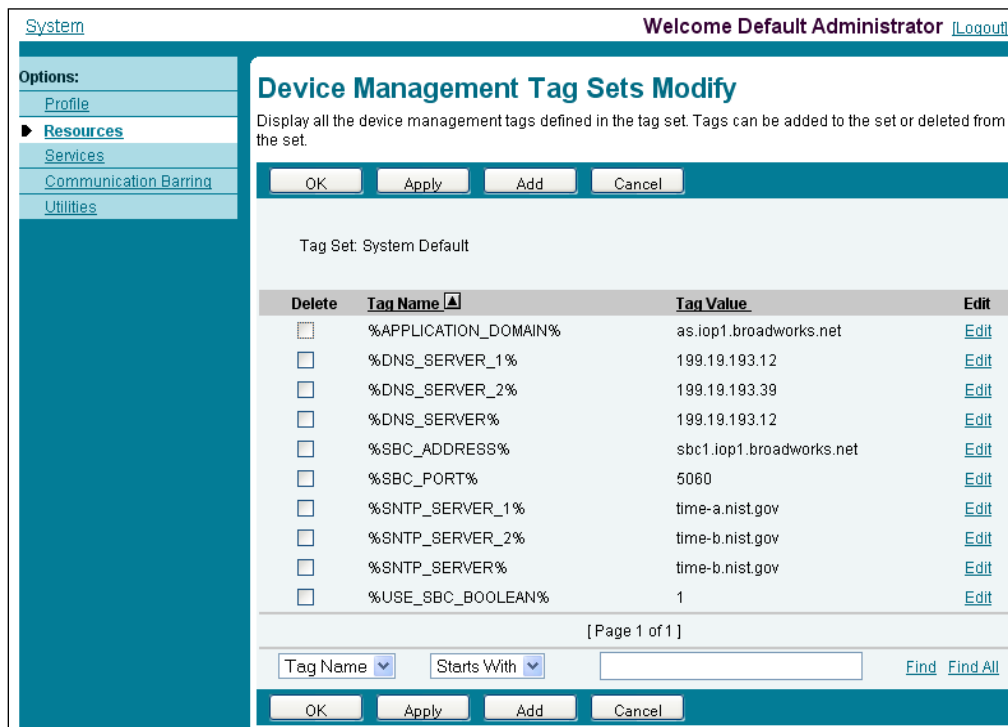
The Gigaset N720 makes use of custom tags which can be configured by a BroadWorks administrator as either system default or device type-specific tags. This section identifies the required tags.

5.1.1.1 Create System Default Tags

Browse to *System* → *Resources* → *Device Management Tag Sets* and select the *System Default* tag set. The Gigaset configuration templates make use of the tags in the following table. Add the tags if they do not already exist.

Tag Name	Valid Settings	Description
%SBC_ADDRESS%	IP address/FQDN	SBC SIP address.
%SBC_PORT%	Port	SBC SIP port. The port should be set if the defined session border controller (SBC) address is an IP address. If the SBC address is an FQDN, then the SBC port should not be set.
%USE_SBC_BOOLEAN%	0/1	Use SBC: 1=yes, 0=no

Example System Default Tag Settings



System Welcome Default Administrator [Logout](#)

Options:

- [Profile](#)
- Resources**
- [Services](#)
- [Communication Barring](#)
- [Utilities](#)

Device Management Tag Sets Modify

Display all the device management tags defined in the tag set. Tags can be added to the set or deleted from the set.

OK Apply Add Cancel

Tag Set: System Default

Delete	Tag Name	Tag Value	Edit
<input type="checkbox"/>	%APPLICATION_DOMAIN%	as.iop1.broadworks.net	Edit
<input type="checkbox"/>	%DNS_SERVER_1%	199.19.193.12	Edit
<input type="checkbox"/>	%DNS_SERVER_2%	199.19.193.39	Edit
<input type="checkbox"/>	%DNS_SERVER%	199.19.193.12	Edit
<input type="checkbox"/>	%SBC_ADDRESS%	sbcl.iop1.broadworks.net	Edit
<input type="checkbox"/>	%SBC_PORT%	5060	Edit
<input type="checkbox"/>	%SNTP_SERVER_1%	time-a.nist.gov	Edit
<input type="checkbox"/>	%SNTP_SERVER_2%	time-b.nist.gov	Edit
<input type="checkbox"/>	%SNTP_SERVER%	time-b.nist.gov	Edit
<input type="checkbox"/>	%USE_SBC_BOOLEAN%	1	Edit

[Page 1 of 1]

Tag Name Starts With [Find](#) [Find All](#)

OK Apply Add Cancel

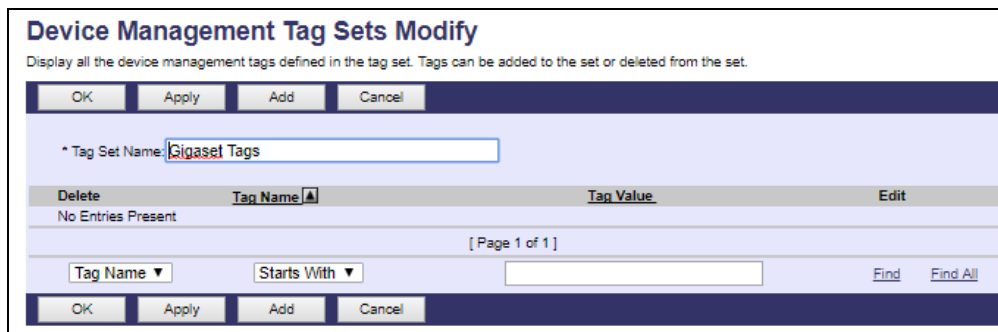
Figure 10 System Default Tag Settings

5.1.1.2 Create Device Type-specific Tags

Browse to *System* → *Resources* → *Device Management Tag Sets* and then click **Add** to add a new tag set. Configure the tag set name using the device name appended by *Tags: Gigaset Tags*. Add the device type specific tags in the following table to the device tag set. If the tag set already exists, make sure the following tags are defined.

Tag Name	Valid Settings	Description
None	-----	-----

Example Device Type-specific Tag Settings



Device Management Tag Sets Modify

Display all the device management tags defined in the tag set. Tags can be added to the set or deleted from the set.

OK Apply Add Cancel

* Tag Set Name:

Delete	Tag Name	Tag Value	Edit
No Entries Present			

[Page 1 of 1]

Tag Name Starts With [Find](#) [Find All](#)

OK Apply Add Cancel

Figure 11 Device Type-specific Tag Settings

5.1.2 Configure BroadWorks Device Profile Type

The device profile type is a system-level structure that defines how the device interfaces with BroadWorks. It also identifies the default configuration files and other files, such as firmware, which are required for the device to operate correctly. The device profile type is created by the system administrator. Group administrators use the device profile type to create a device profile. The device profile is an instance of the device profile type that is associated with a physical device.

There are two BroadWorks device profile configuration methods described: import and manual. The import method takes a DTAF as input and builds the BroadWorks device profile type(s) automatically. The manual method takes the administrator through the steps to manually add and configure the device profile type(s).

The import method should be used if all of the following prerequisites are met:

- The BroadWorks Release is 17.0 or later.
- The device profile type(s) being imported do not already exist on the system. (If either a previous import or manual configuration was done, then the import fails.)
- There is a DTAF file available for import with a BroadWorks release level that is the same as or prior to the release to which it is being imported. If the DTAF file is at a release level later than the release being imported to, then the import can fail.

Otherwise, use the manual method.

For more detailed instructions, refer to the *BroadWorks CPE Kit Usage Guide* [8] and the *BroadWorks Device Management Configuration Guide* [2].

5.1.2.1 Configuration Method 1: Import

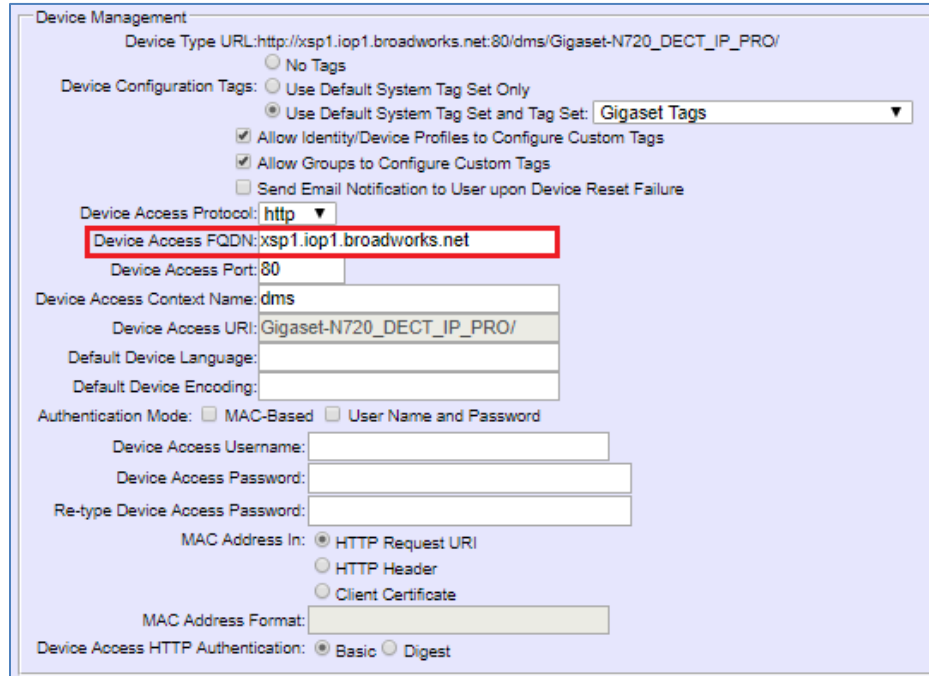
This section identifies the steps necessary to make use of the Device Management import feature to configure BroadWorks to add the Gigaset N720 as a Device Management-enabled device type. Also, see the *BroadWorks CPE Kit Usage Guide* [8].

Download the Gigaset N720 CPE kit from BroadSoft Xchange at xchange.broadsoft.com. Extract the DTAF file(s) from the CPE kit. The DTAF file is the import file.

- 1) Log in to BroadWorks as an administrator.
- 2) Browse to *System* → *Resources* → *Identity/Device Profile Types* and then click **Import**.
- 3) Select *Browse* to find the extracted DTAF file for the model and then click **OK** to start the import.

After the import finishes, complete the following post-import configuration steps:

- 4) Browse to *System* → *Resources* → *Identity/Device Profile Types*.
- 5) Perform a search to find the imported Gigaset device profile type, Gigaset N720.
- 6) Browse to the *Profile* page and change the Device Management Device Access FQDN to your Xtended Services Platform (XSP) or XSP cluster address.



Device Management

Device Type URL: `http://xsp1.iop1.broadworks.net:80/dms/Gigaset-N720_DECT_IP_PRO/`

Device Configuration Tags: ☐ No Tags ☒ Use Default System Tag Set Only ☐ Use Default System Tag Set and Tag Set: **Gigaset Tags**

☒ Allow Identity/Device Profiles to Configure Custom Tags

☒ Allow Groups to Configure Custom Tags

☐ Send Email Notification to User upon Device Reset Failure

Device Access Protocol: **http**

Device Access FQDN: xsp1.iop1.broadworks.net

Device Access Port: 80

Device Access Context Name: dms

Device Access URI: Gigaset-N720_DECT_IP_PRO/

Default Device Language:

Default Device Encoding:

Authentication Mode: ☐ MAC-Based ☐ User Name and Password

Device Access Username:

Device Access Password:

Re-type Device Access Password:

MAC Address In: ☒ HTTP Request URI ☐ HTTP Header ☐ Client Certificate

MAC Address Format:

Device Access HTTP Authentication: ☒ Basic ☐ Digest

Figure 12 Device Access FQDN

- 7) After importing the DTAF, restart the Application Server to load the *TimeZoneAlias* file.

5.1.2.2 Configuration Method 2: Manual

This section identifies the basic steps necessary for an administrator to manually configure BroadWorks to add the Gigaset N720 as a Device Management-enabled device type. This method should not be used except in special cases as described in the opening to section [5.1.2 Configure BroadWorks Device Profile Type](#).

For more detailed instruction on manual configuration, refer to the *BroadWorks CPE Kit Usage Guide* [8] and the *BroadWorks Device Management Configuration Guide* [2].

The steps in this section can also be followed to update previously imported or configured device profile type(s) with new configuration files and firmware.

5.1.2.2.1 Create or Modify Device Profile Type

This section identifies the BroadWorks device profile type settings relevant to Device Management for the Gigaset N720.

Browse to *System* → *Resources* → *Identity/Device Profile Types* and perform a search to find the <partner name> device profile type(s) created in section [3.1 BroadWorks Device Profile Type Configuration](#) or add the device profile type for each model using the settings from section [3.1 BroadWorks Device Profile Type Configuration](#) if they do not exist.

Configure the device profile type *Signaling Address Type*, *Standard options* settings to match the settings in section [3.1 BroadWorks Device Profile Type Configuration](#). The *Advanced options* should be configured to match with the following example:

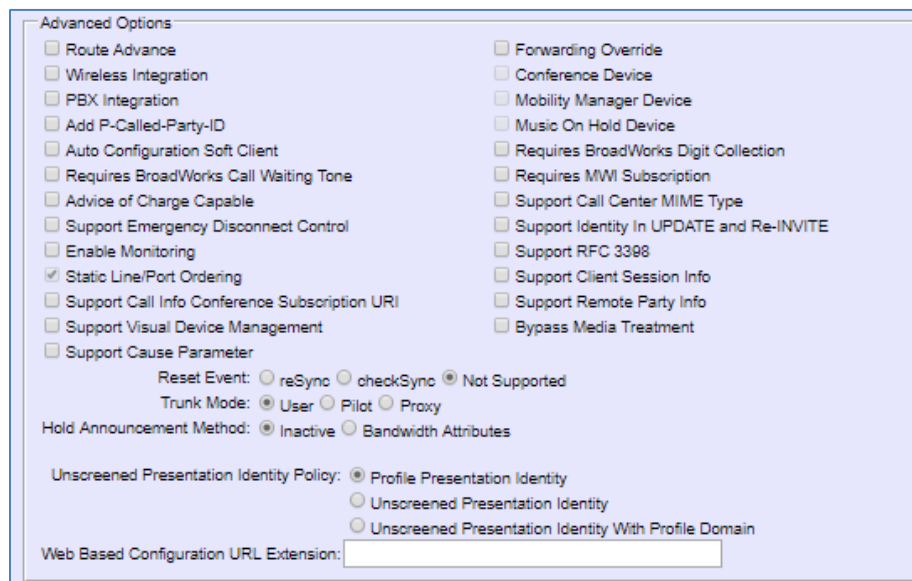


Figure 13 DM Advanced Options

Configure the device profile type *Device Management* options as shown in section [5.1.2.1 Configuration Method 1: Import](#).

The following subsections identify the required settings specific to Device Management.

5.1.2.2.2 Define Device Profile Type Files

This section describes the BroadWorks Device Management configuration necessary to identify the configuration files and other files that the Gigaset N720 downloads.

Configuration templates, firmware, and other files the N720 uses must be uploaded to BroadWorks. Download the Gigaset N720 CPE kit from BroadSoft Xchange at xchange.broadsoft.com. Extract the configuration files from the *Configuration Files* folder of CPE kit. Obtain the firmware files directly from Gigaset.

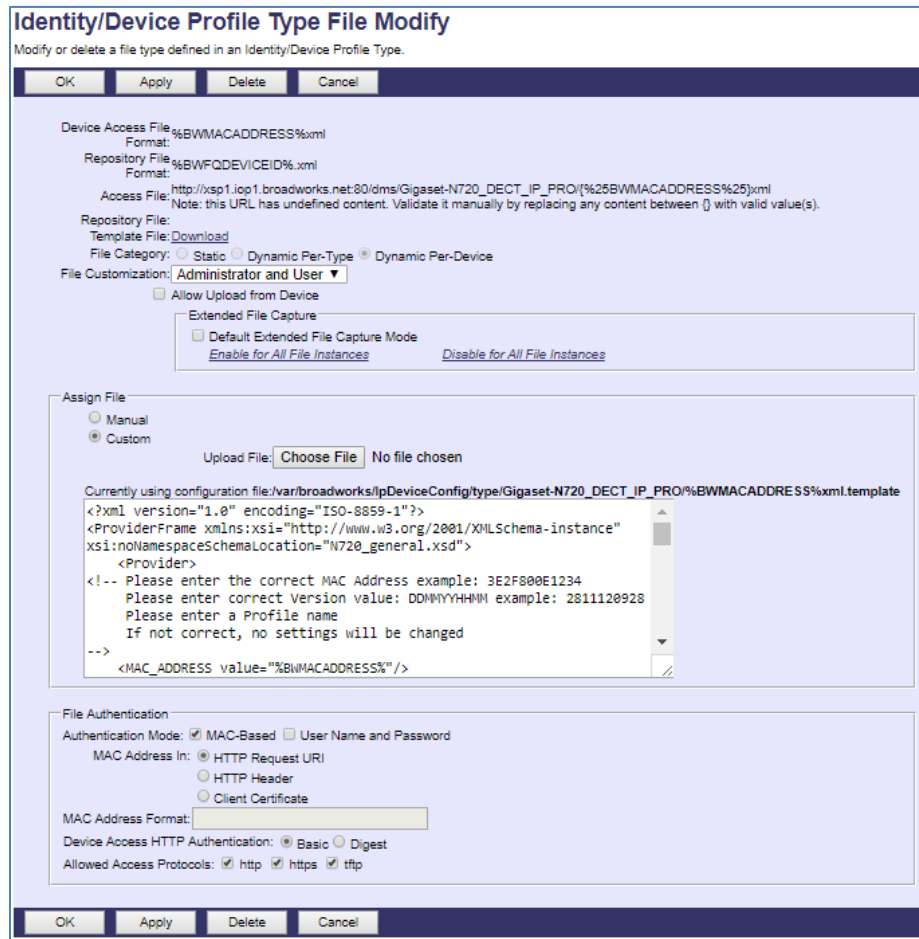
The following table identifies the Gigaset configuration files distributed with the 70.105.00.000.00 CPE kit.

File Name	CPE Kit Template File Name	File Type	Description
Examples			
<MAC Address>.xml	%BWMACADDRESS%.xml.template	Device-specific	This file contains all the configuration the device needs to load.
TimeZoneAliasLabels_Gigaset-N720_DECT_IP_PRO.properties	TimeZoneAliasLabels_Gigaset-N720_DECT_IP_PRO.properties	Time Zone Alias	The time zone alias file is a BroadWorks Device Management file used to map time zone identifiers between BroadWorks and Gigaset N720 devices. A time zone alias file is required for each model.

5.1.2.2.2.1 <MAC Address>.xml

Add the <MAC Address>.xml file to the device profile type with the settings shown in [Figure 14](#).

After creating the device profile type file, upload **<MAC Address>.xml**, which is extracted from the CPE kit obtained from Gigaset. Use the **Browse** button on the file definition screen. Be sure to click **Apply** after uploading the file.



Identity/Device Profile Type File Modify
Modify or delete a file type defined in an Identity/Device Profile Type.

OK Apply Delete Cancel

Device Access File: %BWMACADDRESS%.xml
Format: %BWMACADDRESS%.xml
Repository File: %BWFQDEVICEID%.xml
Format: %BWFQDEVICEID%.xml
Access File: http://xsp1.iop1.broadworks.net:80/dms/Gigaset-N720_DECT_IP_PRO/{%25BWMACADDRESS%25}.xml
Note: this URL has undefined content. Validate it manually by replacing any content between {} with valid value(s).
Repository File: [Download](#)
Template File: [Download](#)
File Category: ☐ Static ☐ Dynamic Per-Type ☒ Dynamic Per-Device
File Customization: Administrator and User
☐ Allow Upload from Device
☐ Extended File Capture
☐ Default Extended File Capture Mode
[Enable for All File Instances](#) [Disable for All File Instances](#)

Assign File
☐ Manual
☒ Custom
Upload File: [Choose File](#) No file chosen
Currently using configuration file: /var/broadworks/lpDeviceConfig/type/Gigaset-N720_DECT_IP_PRO/%BWMACADDRESS%.xml.template

```
<?xml version="1.0" encoding="ISO-8859-1"?>
<ProviderFrame xmlns:xsi="http://www.w3.org/2001/XMLSchema-instance"
xsi:noNamespaceSchemaLocation="N720_general.xsd">
  <Provider>
    <!-- Please enter the correct MAC Address example: 3E2F800E1234
    Please enter correct Version value: DDMMYYHHMM example: 2811120928
    Please enter a Profile name
    If not correct, no settings will be changed
    -->
    <MAC_ADDRESS value="%BWMACADDRESS%"/>
  </Provider>
</ProviderFrame>
```

File Authentication
Authentication Mode: ☒ MAC-Based ☐ User Name and Password
MAC Address In: ☒ HTTP Request URI
☐ HTTP Header
☐ Client Certificate
MAC Address Format:
Device Access HTTP Authentication: ☒ Basic ☐ Digest
Allowed Access Protocols: ☒ http ☒ https ☒ tftp

OK Apply Delete Cancel

Figure 14 <MAC Address>.xml File Settings

5.1.2.2.3 Time Zone Mapping

The CPE kit contains a time zone properties file for each device model. This file maps the BroadWorks user's time zone settings to the device's time zone settings.

This time zone mapping file must be added to the `/usr/local/broadworks/bw_base/conf/dms` directory on the Application Server using the following file name format: *TimeZoneAliasLabels_Gigaset-N720_DECT_IP_PRO.properties*.

You must restart the Application Server for the *TimeZoneAlias* files to be picked up by the system.

5.1.2.2.4 Language Mapping

To enable Device Management control of the phone language for languages other than English, the languages defined on the BroadWorks Application Server must be mapped to the Gigaset-N720_DEC_IP_PRO definitions.

To perform the mapping, select the device profile type and from there select the *Languages* link. The defined BroadWorks languages will be listed in a table. If languages other than English do not appear, they have not yet been defined on the BroadWorks Application Server.

The supported languages and required mapping are:

BroadWorks Language Identifier	Gigaset-N720_DEC_IP_PRO Language Mapping
English (US)	0x1
English (BR)	0x1
French	0x9
German	0x2
Italian	0x7
Russian	0x17
Spanish (CALA)	0x4
Spanish (Spain)	0x4

The language applied to an individual phone is determined by the language defined for the user on the *BroadWorks User's Profile* page (see *Figure 7*). Device language is determined from the first BroadWorks User assigned to device.

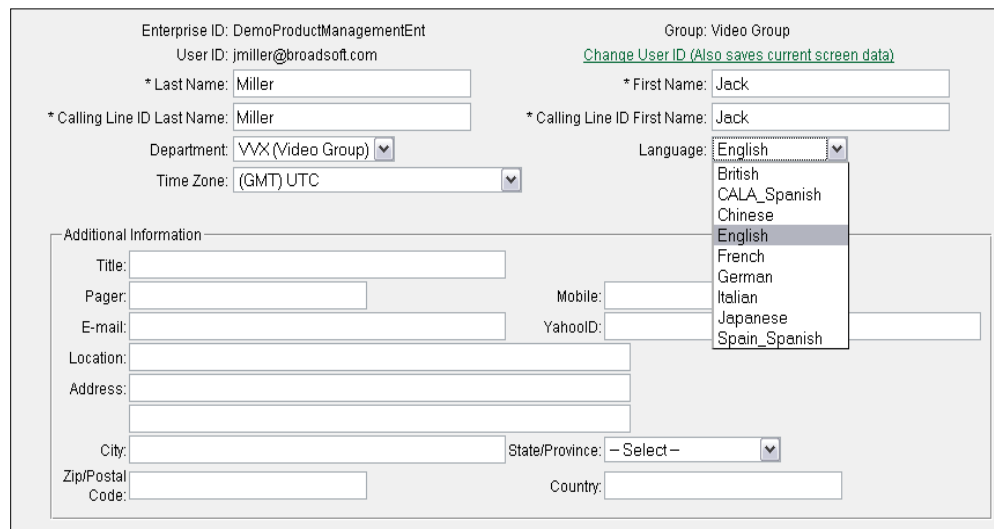


Figure 15 BroadWorks User Language Definition

5.1.3 Create Device Profile Instance

The previous sections defined the device profile type such that the system is ready to mass deploy device profiles. A device profile is an instance of the device profile type and defines the BroadWorks interface to an individual Gigaset device.

Browse to the BroadWorks <group> → *Resources* → *Identity/Device Profiles* page and then select **Add** to add a new Gigaset N720 device profile. Configure the device profile as shown in the *Figure 8* example.

The MAC Address field must be populated with the device MAC address.




Figure 16 Device Profile Instance

5.1.4 Configure BroadWorks User

Configure the user with the desired BroadWorks configuration and services. Any services that require a specific configuration on the device are managed via Device Management and are defined in the device configuration files, if the template files are created with the correct Device Management tags.

The device profile created in the previous section must be assigned to the BroadWorks user. Assigning the device profile to the user automatically causes the Device Management feature to generate the device configuration files for this user's device.

To assign the device profile to the user, browse to the BroadWorks *<user>* → *Addresses*.

5.1.5 Customize Tags

This section identifies custom tags used by the N720 that may need to be customized at the device profile. Customizing a tag at the device profile level overrides the setting at the device profile type and/or group level for the individual device profile.

Tag Name	Valid Settings	Description
%CONNECTION_NAME_<1-10>% Example: %CONNECTION_NAME_7%	Alphanumeric string with maximum of 14 characters long.	Connection name can be changed from default one (Example: IP7) to own name (that is, Company name)

5.1.5.1 SBC Address Customization for Edge Device

In many deployments, an edge device, such as an enterprise SBC or application layer gateway, is deployed on the enterprise edge. The edge device's SIP server or outbound proxy setting is configured with the service provider's SBC IP address or FQDN. If there is no edge device, the customization below does not apply.

To integrate the edge device with Device Management, the SBC address tag (%SBC_ADDRESS%) defined in section [5.1.1.1 Create System Default Tags](#) must be overridden at the group level with the LAN address of the edge device. To do so, perform the following steps.

- 1) At the *Group* → *Utilities* → *Configure Device* page, select the Gigaset device profile (for example, Gigaset-N720_DECT_IP_Pro).
- 2) Click on the *Custom Tags* tab.
- 3) Click **Add**.
- 4) For the tag, enter "SBC_ADDRESS".
- 5) For the value, enter the edge device LAN IP address.
- 6) To save the tag data, click **OK**.

5.1.6 Configure Gigaset N720

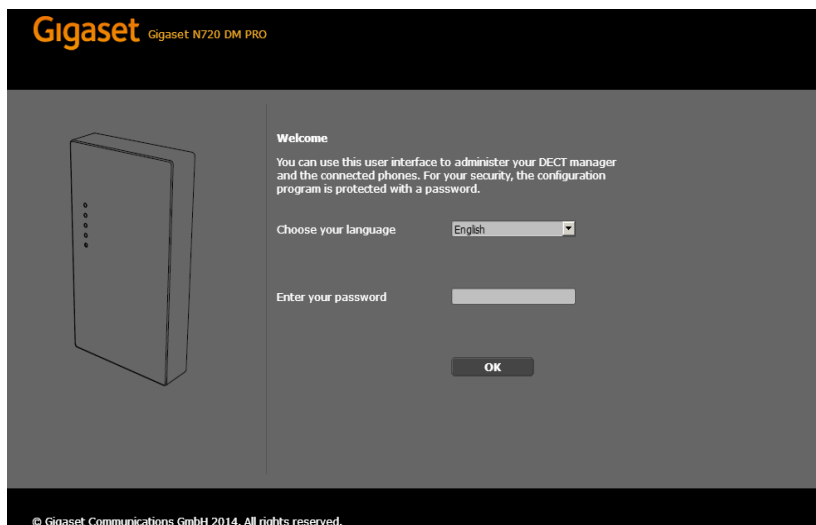
This section describes the steps necessary to configure the Gigaset N720 to integrate with BroadWorks Device Management.

5.1.6.1 Defining Device Management File Access URI

In case manual configuration is required, follow the instructions below to manually define the Device Management file access URL:

- 1) Log in to the web user interface (UI) for the device. Browse to the *Settings* → *Management* → *Firmware Update* page. Fill in the Configuration File URL field Device Management server address URL/%MACD.xml.
- 2) Browse to *Settings* → *Network and Connections* → *Security* and enter the BroadWorks device access user name and password in Server Authentication section (HTTP digest username and HTTP digest password).

Example Login Screen



Gigaset Gigaset N720 DM PRO

Welcome

You can use this user interface to administer your DECT manager and the connected phones. For your security, the configuration program is protected with a password.

Choose your language:

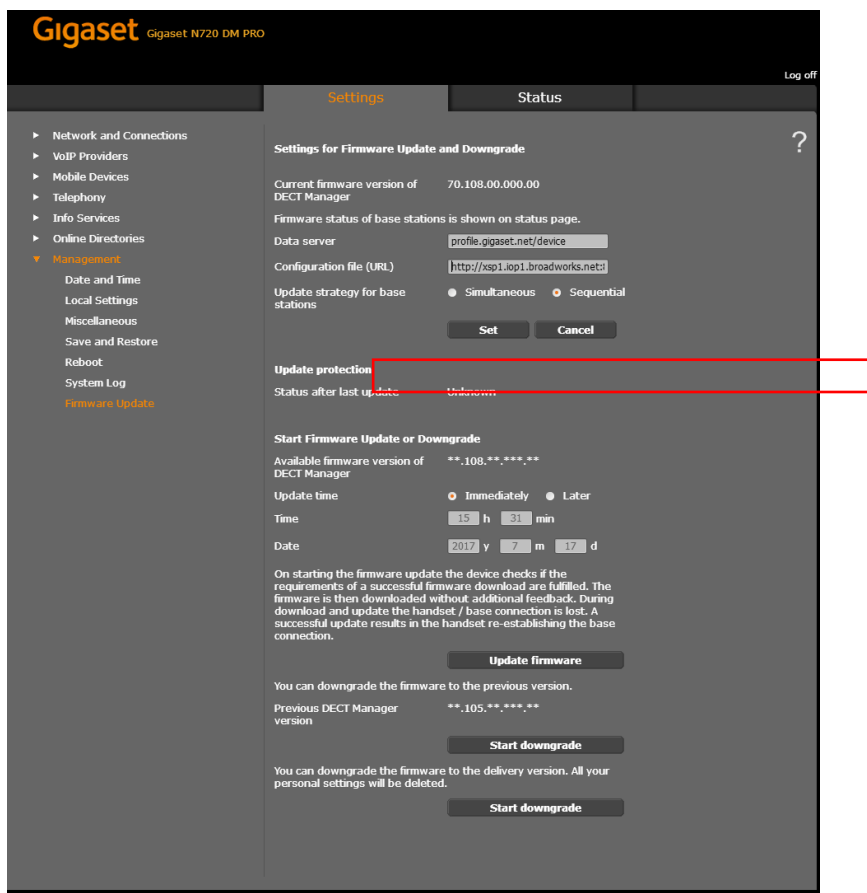
Enter your password:

OK

© Gigaset Communications GmbH 2014. All rights reserved.

Figure 17 Login Screen

Example Upgrade Screen



Gigaset Gigaset N720 DM PRO Log off

Settings **Status**

- Network and Connections
- VoIP Providers
- Mobile Devices
- Telephony
- Info Services
- Online Directories
- Management
 - Date and Time
 - Local Settings
 - Miscellaneous
 - Save and Restore
 - Reboot
 - System Log
 - Firmware Update

Settings for Firmware Update and Downgrade

Current firmware version of DECT Manager: 70.108.00.000.00

Firmware status of base stations is shown on status page.

Data server:

Configuration file (URL):

Update strategy for base stations: ☒ Simultaneous ☐ Sequential

Set **Cancel**

Update protection

Status after last update: Unknown

Start Firmware Update or Downgrade

Available firmware version of DECT Manager: **_108.**_***_**

Update time: ☒ Immediately ☐ Later

Time: h min

Date: y m d

On starting the firmware update the device checks if the requirements of a successful firmware download are fulfilled. The firmware is then downloaded without additional feedback. During download and update the handset / base connection is lost. A successful update results in the handset re-establishing the base connection.

Update firmware

You can downgrade the firmware to the previous version.

Previous DECT Manager version: **_105.**_***_**

Start downgrade

You can downgrade the firmware to the delivery version. All your personal settings will be deleted.

Start downgrade

Figure 18 Firmware Update Screen

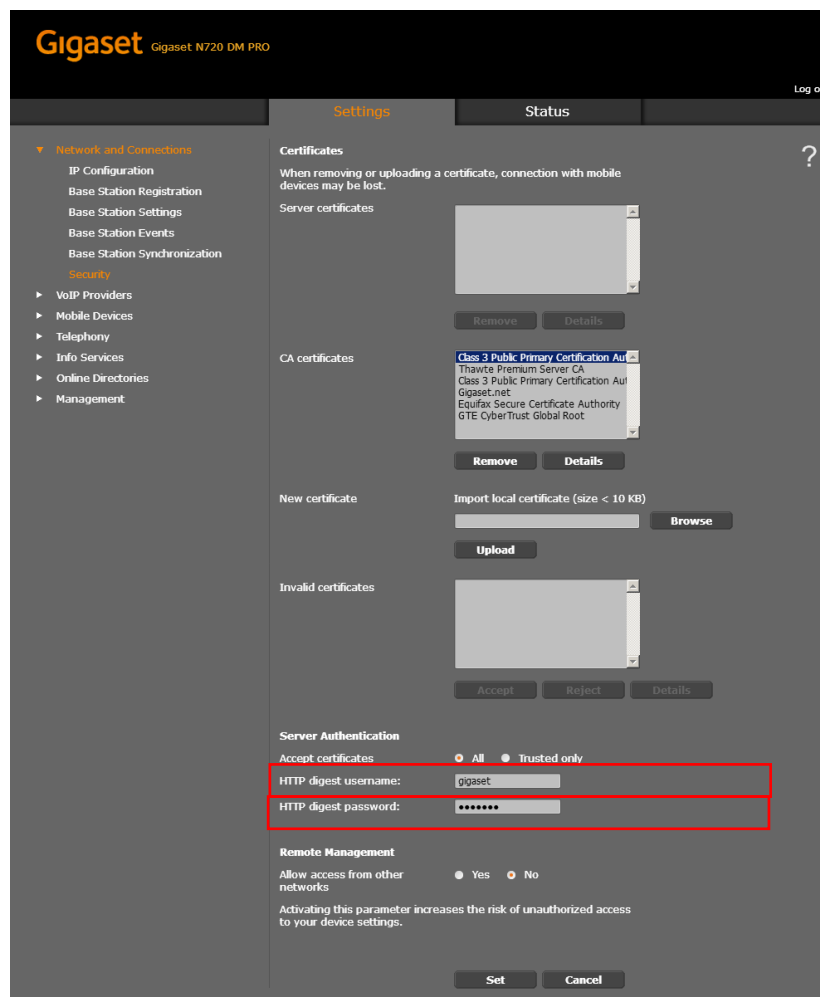


Figure 19 Security Settings Screen

5.1.6.2 No Touch Provisioning

No Touch Provisioning allows N720 to be deployed with minimal user input. To put the endpoint in service, the N720 can be simply taken out of the box and plugged into the LAN.

N720 supports Gigaset-hosted redirect service where the Gigaset default configuration URL is defined in Gigaset's factory configuration. When the N720 establishes internet connectivity, N720 contacts the Gigaset redirect service to obtain the BroadWorks Device Management file access URL. Finally, N720 follows the normal process for requesting configuration files.

The following diagram is the device startup provisioning process flow chart for the No Touch Provisioning capability.

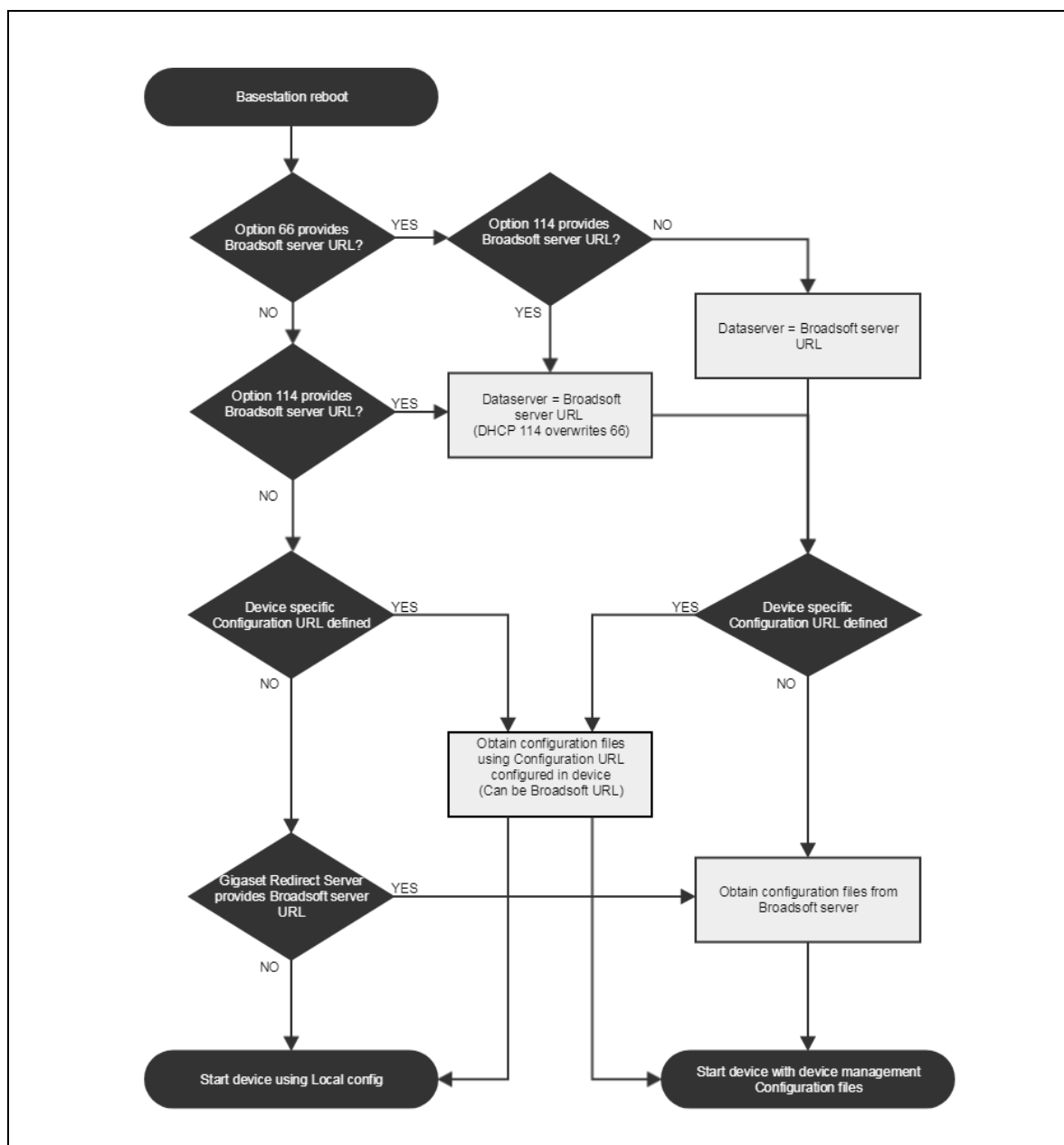


Figure 20 Device Startup Provisioning Process Flow Chart

The following sections identify the necessary steps to enable No Touch Provisioning for N720 using BroadWorks Device Management Redirect and Gigaset redirect service.

5.1.6.2.1 Gigaset Device Management Redirect

Gigaset Device Management Redirect is a web redirect service hosted by Gigaset. It works in conjunction with the BroadWorks Device Management Redirect. Hence, prior to device deployment, the administrator is required to login to Gigaset's web portal to associate each device based on the MAC address to the default BroadWorks Device Management URL. At boot time, when triggered by the conditions defined in [Figure 20 Device Startup Provisioning Process Flow Chart](#), the N720 automatically queries the Gigaset Device Management Redirect service for the associated BroadWorks URL. The N720 finally completes the provisioning process as detailed in the previous section. For more information about the Gigaset Device Management Redirect service, visit <https://teamwork.gigaset.com/gigawiki/display/GPPPO/Redirect+server>.

Appendix A: Reference N720 Configuration Files

The following is a reference configuration for the N720 configured for use with BroadWorks.

Device-specific File: <MAC_ADDRESS.xml>

NOTE: This is an example file and it should be used for reference only.

```
<?xml version="1.0" encoding="ISO-8859-1"?>
<ProviderFrame xmlns:xsi="http://www.w3.org/2001/XMLSchema-instance"
xsi:noNamespaceSchemaLocation="N720_general.xsd">
  <Provider>
    <!-- Please enter the correct MAC Address example: 3E2F800E1234
    Please enter correct Version value: DDMMYYHHMM example: 2811120928
    Please enter a Profile name
    If not correct, no settings will be changed
    -->
    <MAC_ADDRESS value="%BWMACADDRESS%"/>
    <PROFILE_NAME class="string" value="GigasetN720"/>

    <!-- Local settings - Data -->
    <SYMB_ITEM ID="BS_IP_Data.uacS_HTTP_DIGEST_USERNAME" class="symb_item"
value="Gigaset"/>
    <SYMB_ITEM ID="BS_IP_DATA.aucS_HTTP_DIGEST_PASSWORD" class="symb_item"
value="Gigaset"/>

    <!-- General settings for 100 VoIP accounts-->
    <SYMB_ITEM ID="BS_VOIP_Data.astVoipAccounts[0].ucVoipProviderIndex" class="symb_item"
value="0"/>
    <SYMB_ITEM ID="BS_VOIP_Data.astVoipProviders[0].aucSIP_PROVIDER_NAME[0]"
class="symb_item" value="%CONNECTION_NAME_1%"/>
    <SYMB_ITEM ID="BS_VOIP_Data.astVoipProviders[0].aucSIP_DOMAIN[0]" class="symb_item"
value="%BWSERVERADDRESS%"/>
    <SYMB_ITEM ID="BS_VOIP_Data.astVoipProviders[0].aucSIP_SERVER[0]" class="symb_item"
value="%BWSERVERADDRESS%"/>
    <SYMB_ITEM ID="BS_VOIP_Data.astVoipProviders[0].uiSIP_SERVER_PORT" class="symb_item"
value="5060"/>
    <SYMB_ITEM ID="BS_VOIP_Data.astVoipProviders[0].aucSIP_REGISTRAR[0]" class="symb_item"
value="%BWSERVERADDRESS%"/>
    <SYMB_ITEM ID="BS_VOIP_Data.astVoipProviders[0].uiSIP_REGISTRAR_PORT" class="symb_item"
value="5060"/>
    <SYMB_ITEM ID="BS_VOIP_Data.astVoipProviders[0].uire_REGISTRATION_TIMER"
class="symb_item" value="180"/>
    <SYMB_ITEM ID="BS_VOIP_Data.astVoipProviders[0].ucSIP_USE_STUN" class="symb_item"
value="0"/>
    <SYMB_ITEM ID="BS_VOIP_Data.astVoipProviders[0].aucSTUN_SERVER[0]" class="symb_item"
value=""/>
    <SYMB_ITEM ID="BS_VOIP_Data.astVoipProviders[0].uiSTUN_SERVER_PORT" class="symb_item"
value="3478"/>
    <SYMB_ITEM ID="BS_VOIP_Data.astVoipProviders[0].uire_STUN_TIMER" class="symb_item"
value="240"/>
    <SYMB_ITEM ID="BS_VOIP_Data.astVoipProviders[0].uinAT_REFRESH_TIME" class="symb_item"
value="20"/>
    <SYMB_ITEM ID="BS_VOIP_Data.astVoipProviders[0].ucOUTBOUND_PROXY_MODE" class="symb_item"
value="%USE_SBC_BOOLEAN%"/>
    <SYMB_ITEM ID="BS_VOIP_Data.astVoipProviders[0].aucOUTBOUND_PROXY[0]" class="symb_item"
value="%SBC_ADDRESS%"/>
    <SYMB_ITEM ID="BS_VOIP_Data.astVoipProviders[0].uiOUTBOUND_PROXY_PORT" class="symb_item"
value="%SBC_PORT%"/>

    <!--Language setting -->

    <SYMB_ITEM ID="BS_IP_Data.ucI_HTTPLANGUAGE" class="symb_item" value="%BWLLANGUAGE-1%"/>
```

```
<!--Local settings -->

<SYMB_ITEM ID="BS_IP_Data.ucI_DIALING_PLAN_COUNTRY_ID" class="symb_item" value="0x19"/>
<SYMB_ITEM ID="BS_AE_SwConfig.ucCountryCodeTone" class="symb_item" value="1"/>
<SYMB_ITEM ID="BS_VOIP_Data.astVoipProviders[0].ucSIP_PREFERRED_TRANSPORT_LAYER"
class="symb_item" value="0"/>
<SYMB_ITEM ID="BS_IP_Data.uiI_TIME_TIMEZONE" class="symb_item" value="%BWTIMEZONE-1%"/>
<SYMB_ITEM ID="BS_IP_Data.ucB_TIME_USE_AUTOMATIC_DST" class="symb_item" value="0x1"/>
<SYMB_ITEM ID="BS_IP_Data.aucS_CONFIGFILE_URL" class="symb_item"
value="http://%BWDEVICEACCESSFQDN%:%BWDEVICEACCESSPORT%/%BWDMSCONTEXT%/%BWDEVICEACCESSURI%/%
BWMACADDRESS%.xml"/>

<!--VoIP 1 -->
<SYMB_ITEM ID="BS_VOIP_Data.astVoipAccounts[0].aucS_SIP_DISPLAYNAME[0]"
class="symb_item" value="%BWNAME-1%"/>
<SYMB_ITEM ID="BS_VOIP_Data.astVoipAccounts[0].aucS_SIP_LOGIN_ID[0]"
class="symb_item" value="%BWAUTHUSER-1%"/>
<SYMB_ITEM ID="BS_VOIP_Data.astVoipAccounts[0].aucS_SIP_PASSWORD[0]"
class="symb_item" value="%BWAUTHPASSWORD-1%"/>
<SYMB_ITEM ID="BS_VOIP_Data.astVoipAccounts[0].aucS_SIP_USER_ID[0]" class="symb_item"
value="%BWLINPORT-1%"/>
<SYMB_ITEM ID="BS_VOIP_Data.astVoipAccounts[0].ucB_SIP_ACCOUNT_IS_ACTIVE_1"
class="symb_item" value="%BWLIN-BINARY-1%"/>
<SYMB_ITEM ID="BS_VOIP_Data.astVoipAccounts[0].ucB_VOIP_NET_AM_ENABLED_1"
class="symb_item" value="0"/>

<!--VoIP 2 -->
<SYMB_ITEM ID="BS_VOIP_Data.astVoipAccounts[1].aucS_SIP_DISPLAYNAME[0]"
class="symb_item" value="%BWNAME-2%"/>
<SYMB_ITEM ID="BS_VOIP_Data.astVoipAccounts[1].aucS_SIP_LOGIN_ID[0]"
class="symb_item" value="%BWAUTHUSER-2%"/>
<SYMB_ITEM ID="BS_VOIP_Data.astVoipAccounts[1].aucS_SIP_PASSWORD[0]"
class="symb_item" value="%BWAUTHPASSWORD-2%"/>
<SYMB_ITEM ID="BS_VOIP_Data.astVoipAccounts[1].aucS_SIP_USER_ID[0]" class="symb_item"
value="%BWLINPORT-2%"/>
<SYMB_ITEM ID="BS_VOIP_Data.astVoipAccounts[1].ucB_SIP_ACCOUNT_IS_ACTIVE_2"
class="symb_item" value="%BWLIN-BINARY-2%"/>
<SYMB_ITEM ID="BS_VOIP_Data.astVoipAccounts[1].ucB_VOIP_NET_AM_ENABLED_1"
class="symb_item" value="0"/>

<!--VoIP 3 -->
<SYMB_ITEM ID="BS_VOIP_Data.astVoipAccounts[2].aucS_SIP_DISPLAYNAME[0]"
class="symb_item" value="%BWNAME-3%"/>
<SYMB_ITEM ID="BS_VOIP_Data.astVoipAccounts[2].aucS_SIP_LOGIN_ID[0]"
class="symb_item" value="%BWAUTHUSER-3%"/>
<SYMB_ITEM ID="BS_VOIP_Data.astVoipAccounts[2].aucS_SIP_PASSWORD[0]"
class="symb_item" value="%BWAUTHPASSWORD-3%"/>
<SYMB_ITEM ID="BS_VOIP_Data.astVoipAccounts[2].aucS_SIP_USER_ID[0]" class="symb_item"
value="%BWLINPORT-3%"/>
<SYMB_ITEM ID="BS_VOIP_Data.astVoipAccounts[2].ucB_SIP_ACCOUNT_IS_ACTIVE_1"
class="symb_item" value="%BWLIN-BINARY-3%"/>
<SYMB_ITEM ID="BS_VOIP_Data.astVoipAccounts[2].ucB_VOIP_NET_AM_ENABLED_1"
class="symb_item" value="0"/>

<!--VoIP 4 -->
<SYMB_ITEM ID="BS_VOIP_Data.astVoipAccounts[3].aucS_SIP_DISPLAYNAME[0]"
class="symb_item" value="%BWNAME-4%"/>
<SYMB_ITEM ID="BS_VOIP_Data.astVoipAccounts[3].aucS_SIP_LOGIN_ID[0]"
class="symb_item" value="%BWAUTHUSER-4%"/>
<SYMB_ITEM ID="BS_VOIP_Data.astVoipAccounts[3].aucS_SIP_PASSWORD[0]"
class="symb_item" value="%BWAUTHPASSWORD-4%"/>
<SYMB_ITEM ID="BS_VOIP_Data.astVoipAccounts[3].aucS_SIP_USER_ID[0]" class="symb_item"
value="%BWLINPORT-4%"/>
<SYMB_ITEM ID="BS_VOIP_Data.astVoipAccounts[3].ucB_SIP_ACCOUNT_IS_ACTIVE_1"
class="symb_item" value="%BWLIN-BINARY-4%"/>
<SYMB_ITEM ID="BS_VOIP_Data.astVoipAccounts[3].ucB_VOIP_NET_AM_ENABLED_1"
class="symb_item" value="0"/>

<!--VoIP 5 -->
<SYMB_ITEM ID="BS_VOIP_Data.astVoipAccounts[4].aucS_SIP_DISPLAYNAME[0]"
class="symb_item" value="%BWNAME-5%"/>
```

```
<SYMB_ITEM ID="BS_VOIP_Data.astVoipAccounts[4].aucS_SIP_LOGIN_ID[0]"
class="symb_item" value="'%BWAUTHUSER-5%'" />
<SYMB_ITEM ID="BS_VOIP_Data.astVoipAccounts[4].aucS_SIP_PASSWORD[0]"
class="symb_item" value="'%BWAUTHPASSWORD-5%'" />
<SYMB_ITEM ID="BS_VOIP_Data.astVoipAccounts[4].aucS_SIP_USER_ID[0]" class="symb_item"
value="'%BWLINPORT-5%'" />
<SYMB_ITEM ID="BS_VOIP_Data.astVoipAccounts[4].ucB_SIP_ACCOUNT_IS_ACTIVE_1"
class="symb_item" value="'%BWLIN-BINARY-5%'" />
<SYMB_ITEM ID="BS_VOIP_Data.astVoipAccounts[4].ucB_VOIP_NET_AM_ENABLED_1"
class="symb_item" value="0" />

<!--VoIP 6 -->
<SYMB_ITEM ID="BS_VOIP_Data.astVoipAccounts[5].aucS_SIP_DISPLAYNAME[0]"
class="symb_item" value="'%BWNAME-6%'" />
<SYMB_ITEM ID="BS_VOIP_Data.astVoipAccounts[5].aucS_SIP_LOGIN_ID[0]"
class="symb_item" value="'%BWAUTHUSER-6%'" />
<SYMB_ITEM ID="BS_VOIP_Data.astVoipAccounts[5].aucS_SIP_PASSWORD[0]"
class="symb_item" value="'%BWAUTHPASSWORD-6%'" />
<SYMB_ITEM ID="BS_VOIP_Data.astVoipAccounts[5].aucS_SIP_USER_ID[0]" class="symb_item"
value="'%BWLINPORT-6%'" />
<SYMB_ITEM ID="BS_VOIP_Data.astVoipAccounts[5].ucB_SIP_ACCOUNT_IS_ACTIVE_1"
class="symb_item" value="'%BWLIN-BINARY-6%'" />
<SYMB_ITEM ID="BS_VOIP_Data.astVoipAccounts[5].ucB_VOIP_NET_AM_ENABLED_1"
class="symb_item" value="0" />

<!--VoIP 7 -->
<SYMB_ITEM ID="BS_VOIP_Data.astVoipAccounts[6].aucS_SIP_DISPLAYNAME[0]"
class="symb_item" value="'%BWNAME-7%'" />
<SYMB_ITEM ID="BS_VOIP_Data.astVoipAccounts[6].aucS_SIP_LOGIN_ID[0]"
class="symb_item" value="'%BWAUTHUSER-7%'" />
<SYMB_ITEM ID="BS_VOIP_Data.astVoipAccounts[6].aucS_SIP_PASSWORD[0]"
class="symb_item" value="'%BWAUTHPASSWORD-7%'" />
<SYMB_ITEM ID="BS_VOIP_Data.astVoipAccounts[6].aucS_SIP_USER_ID[0]" class="symb_item"
value="'%BWLINPORT-7%'" />
<SYMB_ITEM ID="BS_VOIP_Data.astVoipAccounts[6].ucB_SIP_ACCOUNT_IS_ACTIVE_1"
class="symb_item" value="'%BWLIN-BINARY-7%'" />
<SYMB_ITEM ID="BS_VOIP_Data.astVoipAccounts[6].ucB_VOIP_NET_AM_ENABLED_1"
class="symb_item" value="0" />

<!--VoIP 8 -->
<SYMB_ITEM ID="BS_VOIP_Data.astVoipAccounts[7].aucS_SIP_DISPLAYNAME[0]"
class="symb_item" value="'%BWNAME-8%'" />
<SYMB_ITEM ID="BS_VOIP_Data.astVoipAccounts[7].aucS_SIP_LOGIN_ID[0]"
class="symb_item" value="'%BWAUTHUSER-8%'" />
<SYMB_ITEM ID="BS_VOIP_Data.astVoipAccounts[7].aucS_SIP_PASSWORD[0]"
class="symb_item" value="'%BWAUTHPASSWORD-8%'" />
<SYMB_ITEM ID="BS_VOIP_Data.astVoipAccounts[7].aucS_SIP_USER_ID[0]" class="symb_item"
value="'%BWLINPORT-8%'" />
<SYMB_ITEM ID="BS_VOIP_Data.astVoipAccounts[7].ucB_SIP_ACCOUNT_IS_ACTIVE_1"
class="symb_item" value="'%BWLIN-BINARY-8%'" />
<SYMB_ITEM ID="BS_VOIP_Data.astVoipAccounts[7].ucB_VOIP_NET_AM_ENABLED_1"
class="symb_item" value="0" />

<!--VoIP 9 -->
<SYMB_ITEM ID="BS_VOIP_Data.astVoipAccounts[8].aucS_SIP_DISPLAYNAME[0]"
class="symb_item" value="'%BWNAME-9%'" />
<SYMB_ITEM ID="BS_VOIP_Data.astVoipAccounts[8].aucS_SIP_LOGIN_ID[0]"
class="symb_item" value="'%BWAUTHUSER-9%'" />
<SYMB_ITEM ID="BS_VOIP_Data.astVoipAccounts[8].aucS_SIP_PASSWORD[0]"
class="symb_item" value="'%BWAUTHPASSWORD-9%'" />
<SYMB_ITEM ID="BS_VOIP_Data.astVoipAccounts[8].aucS_SIP_USER_ID[0]" class="symb_item"
value="'%BWLINPORT-9%'" />
<SYMB_ITEM ID="BS_VOIP_Data.astVoipAccounts[8].ucB_SIP_ACCOUNT_IS_ACTIVE_1"
class="symb_item" value="'%BWLIN-BINARY-9%'" />
<SYMB_ITEM ID="BS_VOIP_Data.astVoipAccounts[8].ucB_VOIP_NET_AM_ENABLED_1"
class="symb_item" value="0" />

<!--VoIP 10 -->
<SYMB_ITEM ID="BS_VOIP_Data.astVoipAccounts[9].aucS_SIP_DISPLAYNAME[0]"
class="symb_item" value="'%BWNAME-10%'" />
```



```
<SYMB_ITEM ID="BS_VOIP_Data.astVoipAccounts[9].aucS_SIP_LOGIN_ID[0]"
class="symb_item" value="'%BWAUTHUSER-10%'" />
<SYMB_ITEM ID="BS_VOIP_Data.astVoipAccounts[9].aucS_SIP_PASSWORD[0]"
class="symb_item" value="'%BWAUTHPASSWORD-10%'" />
<SYMB_ITEM ID="BS_VOIP_Data.astVoipAccounts[9].aucS_SIP_USER_ID[0]" class="symb_item"
value="'%BWLINPORT-10%'" />
<SYMB_ITEM ID="BS_VOIP_Data.astVoipAccounts[9].ucB_SIP_ACCOUNT_IS_ACTIVE_1"
class="symb_item" value="%BWLIN-BINARY-10%" />
<SYMB_ITEM ID="BS_VOIP_Data.astVoipAccounts[9].ucB_VOIP_NET_AM_ENABLED_1"
class="symb_item" value="0" />

<!--VoIP 11 -->
<SYMB_ITEM ID="BS_VOIP_Data.astVoipAccounts[10].aucS_SIP_DISPLAYNAME[0]"
class="symb_item" value="'%BWNAME-11%'" />
<SYMB_ITEM ID="BS_VOIP_Data.astVoipAccounts[10].aucS_SIP_LOGIN_ID[0]"
class="symb_item" value="'%BWAUTHUSER-11%'" />
<SYMB_ITEM ID="BS_VOIP_Data.astVoipAccounts[10].aucS_SIP_PASSWORD[0]"
class="symb_item" value="'%BWAUTHPASSWORD-11%'" />
<SYMB_ITEM ID="BS_VOIP_Data.astVoipAccounts[10].aucS_SIP_USER_ID[0]"
class="symb_item" value="'%BWLINPORT-11%'" />
<SYMB_ITEM ID="BS_VOIP_Data.astVoipAccounts[10].ucB_SIP_ACCOUNT_IS_ACTIVE_1"
class="symb_item" value="%BWLIN-BINARY-11%" />
<SYMB_ITEM ID="BS_VOIP_Data.astVoipAccounts[10].ucB_VOIP_NET_AM_ENABLED_1"
class="symb_item" value="0" />

<!--VoIP 12 -->
<SYMB_ITEM ID="BS_VOIP_Data.astVoipAccounts[11].aucS_SIP_DISPLAYNAME[0]"
class="symb_item" value="'%BWNAME-12%'" />
<SYMB_ITEM ID="BS_VOIP_Data.astVoipAccounts[11].aucS_SIP_LOGIN_ID[0]"
class="symb_item" value="'%BWAUTHUSER-12%'" />
<SYMB_ITEM ID="BS_VOIP_Data.astVoipAccounts[11].aucS_SIP_PASSWORD[0]"
class="symb_item" value="'%BWAUTHPASSWORD-12%'" />
<SYMB_ITEM ID="BS_VOIP_Data.astVoipAccounts[11].aucS_SIP_USER_ID[0]"
class="symb_item" value="'%BWLINPORT-12%'" />
<SYMB_ITEM ID="BS_VOIP_Data.astVoipAccounts[11].ucB_SIP_ACCOUNT_IS_ACTIVE_1"
class="symb_item" value="%BWLIN-BINARY-12%" />
<SYMB_ITEM ID="BS_VOIP_Data.astVoipAccounts[11].ucB_VOIP_NET_AM_ENABLED_1"
class="symb_item" value="0" />

<!--VoIP 13 -->
<SYMB_ITEM ID="BS_VOIP_Data.astVoipAccounts[12].aucS_SIP_DISPLAYNAME[0]"
class="symb_item" value="'%BWNAME-13%'" />
<SYMB_ITEM ID="BS_VOIP_Data.astVoipAccounts[12].aucS_SIP_LOGIN_ID[0]"
class="symb_item" value="'%BWAUTHUSER-13%'" />
<SYMB_ITEM ID="BS_VOIP_Data.astVoipAccounts[12].aucS_SIP_PASSWORD[0]"
class="symb_item" value="'%BWAUTHPASSWORD-13%'" />
<SYMB_ITEM ID="BS_VOIP_Data.astVoipAccounts[12].aucS_SIP_USER_ID[0]"
class="symb_item" value="'%BWLINPORT-13%'" />
<SYMB_ITEM ID="BS_VOIP_Data.astVoipAccounts[12].ucB_SIP_ACCOUNT_IS_ACTIVE_1"
class="symb_item" value="%BWLIN-BINARY-13%" />
<SYMB_ITEM ID="BS_VOIP_Data.astVoipAccounts[12].ucB_VOIP_NET_AM_ENABLED_1"
class="symb_item" value="0" />

<!--VoIP 14 -->
<SYMB_ITEM ID="BS_VOIP_Data.astVoipAccounts[13].aucS_SIP_DISPLAYNAME[0]"
class="symb_item" value="'%BWNAME-14%'" />
<SYMB_ITEM ID="BS_VOIP_Data.astVoipAccounts[13].aucS_SIP_LOGIN_ID[0]"
class="symb_item" value="'%BWAUTHUSER-14%'" />
<SYMB_ITEM ID="BS_VOIP_Data.astVoipAccounts[13].aucS_SIP_PASSWORD[0]"
class="symb_item" value="'%BWAUTHPASSWORD-14%'" />
<SYMB_ITEM ID="BS_VOIP_Data.astVoipAccounts[13].aucS_SIP_USER_ID[0]"
class="symb_item" value="'%BWLINPORT-14%'" />
<SYMB_ITEM ID="BS_VOIP_Data.astVoipAccounts[13].ucB_SIP_ACCOUNT_IS_ACTIVE_1"
class="symb_item" value="%BWLIN-BINARY-14%" />
<SYMB_ITEM ID="BS_VOIP_Data.astVoipAccounts[13].ucB_VOIP_NET_AM_ENABLED_1"
class="symb_item" value="0" />

<!--VoIP 15 -->
<SYMB_ITEM ID="BS_VOIP_Data.astVoipAccounts[14].aucS_SIP_DISPLAYNAME[0]"
class="symb_item" value="'%BWNAME-15%'" />
```

```
<SYMB_ITEM ID="BS_VOIP_Data.astVoipAccounts[14].aucS_SIP_LOGIN_ID[0]"
class="symb_item" value="'%BWAUTHUSER-15%'" />
<SYMB_ITEM ID="BS_VOIP_Data.astVoipAccounts[14].aucS_SIP_PASSWORD[0]"
class="symb_item" value="'%BWAUTHPASSWORD-15%'" />
<SYMB_ITEM ID="BS_VOIP_Data.astVoipAccounts[14].aucS_SIP_USER_ID[0]"
class="symb_item" value="'%BWLINPORT-15%'" />
<SYMB_ITEM ID="BS_VOIP_Data.astVoipAccounts[14].ucB_SIP_ACCOUNT_IS_ACTIVE_1"
class="symb_item" value="%BWLIN-BINARY-15%" />
<SYMB_ITEM ID="BS_VOIP_Data.astVoipAccounts[14].ucB_VOIP_NET_AM_ENABLED_1"
class="symb_item" value="0" />

<!--VoIP 16 -->
<SYMB_ITEM ID="BS_VOIP_Data.astVoipAccounts[15].aucS_SIP_DISPLAYNAME[0]"
class="symb_item" value="'%BWNAME-16%'" />
<SYMB_ITEM ID="BS_VOIP_Data.astVoipAccounts[15].aucS_SIP_LOGIN_ID[0]"
class="symb_item" value="'%BWAUTHUSER-16%'" />
<SYMB_ITEM ID="BS_VOIP_Data.astVoipAccounts[15].aucS_SIP_PASSWORD[0]"
class="symb_item" value="'%BWAUTHPASSWORD-16%'" />
<SYMB_ITEM ID="BS_VOIP_Data.astVoipAccounts[15].aucS_SIP_USER_ID[0]"
class="symb_item" value="'%BWLINPORT-16%'" />
<SYMB_ITEM ID="BS_VOIP_Data.astVoipAccounts[15].ucB_SIP_ACCOUNT_IS_ACTIVE_1"
class="symb_item" value="%BWLIN-BINARY-16%" />
<SYMB_ITEM ID="BS_VOIP_Data.astVoipAccounts[15].ucB_VOIP_NET_AM_ENABLED_1"
class="symb_item" value="0" />

<!--VoIP 17 -->
<SYMB_ITEM ID="BS_VOIP_Data.astVoipAccounts[16].aucS_SIP_DISPLAYNAME[0]"
class="symb_item" value="'%BWNAME-17%'" />
<SYMB_ITEM ID="BS_VOIP_Data.astVoipAccounts[16].aucS_SIP_LOGIN_ID[0]"
class="symb_item" value="'%BWAUTHUSER-17%'" />
<SYMB_ITEM ID="BS_VOIP_Data.astVoipAccounts[16].aucS_SIP_PASSWORD[0]"
class="symb_item" value="'%BWAUTHPASSWORD-17%'" />
<SYMB_ITEM ID="BS_VOIP_Data.astVoipAccounts[16].aucS_SIP_USER_ID[0]"
class="symb_item" value="'%BWLINPORT-17%'" />
<SYMB_ITEM ID="BS_VOIP_Data.astVoipAccounts[16].ucB_SIP_ACCOUNT_IS_ACTIVE_1"
class="symb_item" value="%BWLIN-BINARY-17%" />
<SYMB_ITEM ID="BS_VOIP_Data.astVoipAccounts[16].ucB_VOIP_NET_AM_ENABLED_1"
class="symb_item" value="0" />

<!--VoIP 18 -->
<SYMB_ITEM ID="BS_VOIP_Data.astVoipAccounts[17].aucS_SIP_DISPLAYNAME[0]"
class="symb_item" value="'%BWNAME-18%'" />
<SYMB_ITEM ID="BS_VOIP_Data.astVoipAccounts[17].aucS_SIP_LOGIN_ID[0]"
class="symb_item" value="'%BWAUTHUSER-18%'" />
<SYMB_ITEM ID="BS_VOIP_Data.astVoipAccounts[17].aucS_SIP_PASSWORD[0]"
class="symb_item" value="'%BWAUTHPASSWORD-18%'" />
<SYMB_ITEM ID="BS_VOIP_Data.astVoipAccounts[17].aucS_SIP_USER_ID[0]"
class="symb_item" value="'%BWLINPORT-18%'" />
<SYMB_ITEM ID="BS_VOIP_Data.astVoipAccounts[17].ucB_SIP_ACCOUNT_IS_ACTIVE_1"
class="symb_item" value="%BWLIN-BINARY-18%" />
<SYMB_ITEM ID="BS_VOIP_Data.astVoipAccounts[17].ucB_VOIP_NET_AM_ENABLED_1"
class="symb_item" value="0" />

<!--VoIP 19 -->
<SYMB_ITEM ID="BS_VOIP_Data.astVoipAccounts[18].aucS_SIP_DISPLAYNAME[0]"
class="symb_item" value="'%BWNAME-19%'" />
<SYMB_ITEM ID="BS_VOIP_Data.astVoipAccounts[18].aucS_SIP_LOGIN_ID[0]"
class="symb_item" value="'%BWAUTHUSER-19%'" />
<SYMB_ITEM ID="BS_VOIP_Data.astVoipAccounts[18].aucS_SIP_PASSWORD[0]"
class="symb_item" value="'%BWAUTHPASSWORD-19%'" />
<SYMB_ITEM ID="BS_VOIP_Data.astVoipAccounts[18].aucS_SIP_USER_ID[0]"
class="symb_item" value="'%BWLINPORT-19%'" />
<SYMB_ITEM ID="BS_VOIP_Data.astVoipAccounts[18].ucB_SIP_ACCOUNT_IS_ACTIVE_1"
class="symb_item" value="%BWLIN-BINARY-19%" />
<SYMB_ITEM ID="BS_VOIP_Data.astVoipAccounts[18].ucB_VOIP_NET_AM_ENABLED_1"
class="symb_item" value="0" />

<!--VoIP 20 -->
<SYMB_ITEM ID="BS_VOIP_Data.astVoipAccounts[19].aucS_SIP_DISPLAYNAME[0]"
class="symb_item" value="'%BWNAME-20%'" />
```

```
<SYMB_ITEM ID="BS_VOIP_Data.astVoipAccounts[19].aucS_SIP_LOGIN_ID[0]"
class="symb_item" value="'%BWAUTHUSER-20%'" />
<SYMB_ITEM ID="BS_VOIP_Data.astVoipAccounts[19].aucS_SIP_PASSWORD[0]"
class="symb_item" value="'%BWAUTHPASSWORD-20%'" />
<SYMB_ITEM ID="BS_VOIP_Data.astVoipAccounts[19].aucS_SIP_USER_ID[0]"
class="symb_item" value="'%BWLINPORT-20%'" />
<SYMB_ITEM ID="BS_VOIP_Data.astVoipAccounts[19].ucB_SIP_ACCOUNT_IS_ACTIVE_1"
class="symb_item" value="%BWLIN-BINARY-20%" />
<SYMB_ITEM ID="BS_VOIP_Data.astVoipAccounts[19].ucB_VOIP_NET_AM_ENABLED_1"
class="symb_item" value="0" />

<!--VoIP 21 -->
<SYMB_ITEM ID="BS_VOIP_Data.astVoipAccounts[20].aucS_SIP_DISPLAYNAME[0]"
class="symb_item" value="'%BWNAME-21%'" />
<SYMB_ITEM ID="BS_VOIP_Data.astVoipAccounts[20].aucS_SIP_LOGIN_ID[0]"
class="symb_item" value="'%BWAUTHUSER-21%'" />
<SYMB_ITEM ID="BS_VOIP_Data.astVoipAccounts[20].aucS_SIP_PASSWORD[0]"
class="symb_item" value="'%BWAUTHPASSWORD-21%'" />
<SYMB_ITEM ID="BS_VOIP_Data.astVoipAccounts[20].aucS_SIP_USER_ID[0]"
class="symb_item" value="'%BWLINPORT-21%'" />
<SYMB_ITEM ID="BS_VOIP_Data.astVoipAccounts[20].ucB_SIP_ACCOUNT_IS_ACTIVE_1"
class="symb_item" value="%BWLIN-BINARY-21%" />
<SYMB_ITEM ID="BS_VOIP_Data.astVoipAccounts[20].ucB_VOIP_NET_AM_ENABLED_1"
class="symb_item" value="0" />

<!--VoIP 22 -->
<SYMB_ITEM ID="BS_VOIP_Data.astVoipAccounts[21].aucS_SIP_DISPLAYNAME[0]"
class="symb_item" value="'%BWNAME-22%'" />
<SYMB_ITEM ID="BS_VOIP_Data.astVoipAccounts[21].aucS_SIP_LOGIN_ID[0]"
class="symb_item" value="'%BWAUTHUSER-22%'" />
<SYMB_ITEM ID="BS_VOIP_Data.astVoipAccounts[21].aucS_SIP_PASSWORD[0]"
class="symb_item" value="'%BWAUTHPASSWORD-22%'" />
<SYMB_ITEM ID="BS_VOIP_Data.astVoipAccounts[21].aucS_SIP_USER_ID[0]"
class="symb_item" value="'%BWLINPORT-22%'" />
<SYMB_ITEM ID="BS_VOIP_Data.astVoipAccounts[21].ucB_SIP_ACCOUNT_IS_ACTIVE_1"
class="symb_item" value="%BWLIN-BINARY-22%" />
<SYMB_ITEM ID="BS_VOIP_Data.astVoipAccounts[21].ucB_VOIP_NET_AM_ENABLED_1"
class="symb_item" value="0" />

<!--VoIP 23 -->
<SYMB_ITEM ID="BS_VOIP_Data.astVoipAccounts[22].aucS_SIP_DISPLAYNAME[0]"
class="symb_item" value="'%BWNAME-23%'" />
<SYMB_ITEM ID="BS_VOIP_Data.astVoipAccounts[22].aucS_SIP_LOGIN_ID[0]"
class="symb_item" value="'%BWAUTHUSER-23%'" />
<SYMB_ITEM ID="BS_VOIP_Data.astVoipAccounts[22].aucS_SIP_PASSWORD[0]"
class="symb_item" value="'%BWAUTHPASSWORD-23%'" />
<SYMB_ITEM ID="BS_VOIP_Data.astVoipAccounts[22].aucS_SIP_USER_ID[0]"
class="symb_item" value="'%BWLINPORT-23%'" />
<SYMB_ITEM ID="BS_VOIP_Data.astVoipAccounts[22].ucB_SIP_ACCOUNT_IS_ACTIVE_1"
class="symb_item" value="%BWLIN-BINARY-23%" />
<SYMB_ITEM ID="BS_VOIP_Data.astVoipAccounts[22].ucB_VOIP_NET_AM_ENABLED_1"
class="symb_item" value="0" />

<!--VoIP 24 -->
<SYMB_ITEM ID="BS_VOIP_Data.astVoipAccounts[23].aucS_SIP_DISPLAYNAME[0]"
class="symb_item" value="'%BWNAME-24%'" />
<SYMB_ITEM ID="BS_VOIP_Data.astVoipAccounts[23].aucS_SIP_LOGIN_ID[0]"
class="symb_item" value="'%BWAUTHUSER-24%'" />
<SYMB_ITEM ID="BS_VOIP_Data.astVoipAccounts[23].aucS_SIP_PASSWORD[0]"
class="symb_item" value="'%BWAUTHPASSWORD-24%'" />
<SYMB_ITEM ID="BS_VOIP_Data.astVoipAccounts[23].aucS_SIP_USER_ID[0]"
class="symb_item" value="'%BWLINPORT-24%'" />
<SYMB_ITEM ID="BS_VOIP_Data.astVoipAccounts[23].ucB_SIP_ACCOUNT_IS_ACTIVE_1"
class="symb_item" value="%BWLIN-BINARY-24%" />
<SYMB_ITEM ID="BS_VOIP_Data.astVoipAccounts[23].ucB_VOIP_NET_AM_ENABLED_1"
class="symb_item" value="0" />

<!--VoIP 25 -->
<SYMB_ITEM ID="BS_VOIP_Data.astVoipAccounts[24].aucS_SIP_DISPLAYNAME[0]"
class="symb_item" value="'%BWNAME-25%'" />
```

```
<SYMB_ITEM ID="BS_VOIP_Data.astVoipAccounts[24].aucS_SIP_LOGIN_ID[0]"
class="symb_item" value="%BWAUTHUSER-25%"/>
<SYMB_ITEM ID="BS_VOIP_Data.astVoipAccounts[24].aucS_SIP_PASSWORD[0]"
class="symb_item" value="%BWAUTHPASSWORD-25%"/>
<SYMB_ITEM ID="BS_VOIP_Data.astVoipAccounts[24].aucS_SIP_USER_ID[0]"
class="symb_item" value="%BWLINPORT-25%"/>
<SYMB_ITEM ID="BS_VOIP_Data.astVoipAccounts[24].ucB_SIP_ACCOUNT_IS_ACTIVE_1"
class="symb_item" value="%BWLIN-BINARY-25%"/>
<SYMB_ITEM ID="BS_VOIP_Data.astVoipAccounts[24].ucB_VOIP_NET_AM_ENABLED_1"
class="symb_item" value="0"/>

<!--VoIP 26 -->
<SYMB_ITEM ID="BS_VOIP_Data.astVoipAccounts[25].aucS_SIP_DISPLAYNAME[0]"
class="symb_item" value="%BWNAME-26%"/>
<SYMB_ITEM ID="BS_VOIP_Data.astVoipAccounts[25].aucS_SIP_LOGIN_ID[0]"
class="symb_item" value="%BWAUTHUSER-26%"/>
<SYMB_ITEM ID="BS_VOIP_Data.astVoipAccounts[25].aucS_SIP_PASSWORD[0]"
class="symb_item" value="%BWAUTHPASSWORD-26%"/>
<SYMB_ITEM ID="BS_VOIP_Data.astVoipAccounts[25].aucS_SIP_USER_ID[0]"
class="symb_item" value="%BWLINPORT-26%"/>
<SYMB_ITEM ID="BS_VOIP_Data.astVoipAccounts[25].ucB_SIP_ACCOUNT_IS_ACTIVE_1"
class="symb_item" value="%BWLIN-BINARY-26%"/>
<SYMB_ITEM ID="BS_VOIP_Data.astVoipAccounts[25].ucB_VOIP_NET_AM_ENABLED_1"
class="symb_item" value="0"/>

<!--VoIP 27 -->
<SYMB_ITEM ID="BS_VOIP_Data.astVoipAccounts[26].aucS_SIP_DISPLAYNAME[0]"
class="symb_item" value="%BWNAME-27%"/>
<SYMB_ITEM ID="BS_VOIP_Data.astVoipAccounts[26].aucS_SIP_LOGIN_ID[0]"
class="symb_item" value="%BWAUTHUSER-27%"/>
<SYMB_ITEM ID="BS_VOIP_Data.astVoipAccounts[26].aucS_SIP_PASSWORD[0]"
class="symb_item" value="%BWAUTHPASSWORD-27%"/>
<SYMB_ITEM ID="BS_VOIP_Data.astVoipAccounts[26].aucS_SIP_USER_ID[0]"
class="symb_item" value="%BWLINPORT-27%"/>
<SYMB_ITEM ID="BS_VOIP_Data.astVoipAccounts[26].ucB_SIP_ACCOUNT_IS_ACTIVE_1"
class="symb_item" value="%BWLIN-BINARY-27%"/>
<SYMB_ITEM ID="BS_VOIP_Data.astVoipAccounts[26].ucB_VOIP_NET_AM_ENABLED_1"
class="symb_item" value="0"/>

<!--VoIP 28 -->
<SYMB_ITEM ID="BS_VOIP_Data.astVoipAccounts[27].aucS_SIP_DISPLAYNAME[0]"
class="symb_item" value="%BWNAME-28%"/>
<SYMB_ITEM ID="BS_VOIP_Data.astVoipAccounts[27].aucS_SIP_LOGIN_ID[0]"
class="symb_item" value="%BWAUTHUSER-28%"/>
<SYMB_ITEM ID="BS_VOIP_Data.astVoipAccounts[27].aucS_SIP_PASSWORD[0]"
class="symb_item" value="%BWAUTHPASSWORD-28%"/>
<SYMB_ITEM ID="BS_VOIP_Data.astVoipAccounts[27].aucS_SIP_USER_ID[0]"
class="symb_item" value="%BWLINPORT-28%"/>
<SYMB_ITEM ID="BS_VOIP_Data.astVoipAccounts[27].ucB_SIP_ACCOUNT_IS_ACTIVE_1"
class="symb_item" value="%BWLIN-BINARY-28%"/>
<SYMB_ITEM ID="BS_VOIP_Data.astVoipAccounts[27].ucB_VOIP_NET_AM_ENABLED_1"
class="symb_item" value="0"/>

<!--VoIP 29 -->
<SYMB_ITEM ID="BS_VOIP_Data.astVoipAccounts[28].aucS_SIP_DISPLAYNAME[0]"
class="symb_item" value="%BWNAME-29%"/>
<SYMB_ITEM ID="BS_VOIP_Data.astVoipAccounts[28].aucS_SIP_LOGIN_ID[0]"
class="symb_item" value="%BWAUTHUSER-29%"/>
<SYMB_ITEM ID="BS_VOIP_Data.astVoipAccounts[28].aucS_SIP_PASSWORD[0]"
class="symb_item" value="%BWAUTHPASSWORD-29%"/>
<SYMB_ITEM ID="BS_VOIP_Data.astVoipAccounts[28].aucS_SIP_USER_ID[0]"
class="symb_item" value="%BWLINPORT-29%"/>
<SYMB_ITEM ID="BS_VOIP_Data.astVoipAccounts[28].ucB_SIP_ACCOUNT_IS_ACTIVE_1"
class="symb_item" value="%BWLIN-BINARY-29%"/>
<SYMB_ITEM ID="BS_VOIP_Data.astVoipAccounts[28].ucB_VOIP_NET_AM_ENABLED_1"
class="symb_item" value="0"/>

<!--VoIP 30 -->
<SYMB_ITEM ID="BS_VOIP_Data.astVoipAccounts[29].aucS_SIP_DISPLAYNAME[0]"
class="symb_item" value="%BWNAME-30%"/>
```

```
<SYMB_ITEM ID="BS_VOIP_Data.astVoipAccounts[29].aucS_SIP_LOGIN_ID[0]"
class="symb_item" value="'%BWAUTHUSER-30%'" />
<SYMB_ITEM ID="BS_VOIP_Data.astVoipAccounts[29].aucS_SIP_PASSWORD[0]"
class="symb_item" value="'%BWAUTHPASSWORD-30%'" />
<SYMB_ITEM ID="BS_VOIP_Data.astVoipAccounts[29].aucS_SIP_USER_ID[0]"
class="symb_item" value="'%BWLINPORT-30%'" />
<SYMB_ITEM ID="BS_VOIP_Data.astVoipAccounts[29].ucB_SIP_ACCOUNT_IS_ACTIVE_1"
class="symb_item" value="%BWLIN-BINARY-30%" />
<SYMB_ITEM ID="BS_VOIP_Data.astVoipAccounts[29].ucB_VOIP_NET_AM_ENABLED_1"
class="symb_item" value="0" />

<!--VoIP 31 -->
<SYMB_ITEM ID="BS_VOIP_Data.astVoipAccounts[30].aucS_SIP_DISPLAYNAME[0]"
class="symb_item" value="'%BWNAME-31%'" />
<SYMB_ITEM ID="BS_VOIP_Data.astVoipAccounts[30].aucS_SIP_LOGIN_ID[0]"
class="symb_item" value="'%BWAUTHUSER-31%'" />
<SYMB_ITEM ID="BS_VOIP_Data.astVoipAccounts[30].aucS_SIP_PASSWORD[0]"
class="symb_item" value="'%BWAUTHPASSWORD-31%'" />
<SYMB_ITEM ID="BS_VOIP_Data.astVoipAccounts[30].aucS_SIP_USER_ID[0]"
class="symb_item" value="'%BWLINPORT-31%'" />
<SYMB_ITEM ID="BS_VOIP_Data.astVoipAccounts[30].ucB_SIP_ACCOUNT_IS_ACTIVE_1"
class="symb_item" value="%BWLIN-BINARY-31%" />
<SYMB_ITEM ID="BS_VOIP_Data.astVoipAccounts[30].ucB_VOIP_NET_AM_ENABLED_1"
class="symb_item" value="0" />

<!--VoIP 32 -->
<SYMB_ITEM ID="BS_VOIP_Data.astVoipAccounts[31].aucS_SIP_DISPLAYNAME[0]"
class="symb_item" value="'%BWNAME-32%'" />
<SYMB_ITEM ID="BS_VOIP_Data.astVoipAccounts[31].aucS_SIP_LOGIN_ID[0]"
class="symb_item" value="'%BWAUTHUSER-32%'" />
<SYMB_ITEM ID="BS_VOIP_Data.astVoipAccounts[31].aucS_SIP_PASSWORD[0]"
class="symb_item" value="'%BWAUTHPASSWORD-32%'" />
<SYMB_ITEM ID="BS_VOIP_Data.astVoipAccounts[31].aucS_SIP_USER_ID[0]"
class="symb_item" value="'%BWLINPORT-32%'" />
<SYMB_ITEM ID="BS_VOIP_Data.astVoipAccounts[31].ucB_SIP_ACCOUNT_IS_ACTIVE_1"
class="symb_item" value="%BWLIN-BINARY-32%" />
<SYMB_ITEM ID="BS_VOIP_Data.astVoipAccounts[31].ucB_VOIP_NET_AM_ENABLED_1"
class="symb_item" value="0" />

<!--VoIP 33 -->
<SYMB_ITEM ID="BS_VOIP_Data.astVoipAccounts[32].aucS_SIP_DISPLAYNAME[0]"
class="symb_item" value="'%BWNAME-33%'" />
<SYMB_ITEM ID="BS_VOIP_Data.astVoipAccounts[32].aucS_SIP_LOGIN_ID[0]"
class="symb_item" value="'%BWAUTHUSER-33%'" />
<SYMB_ITEM ID="BS_VOIP_Data.astVoipAccounts[32].aucS_SIP_PASSWORD[0]"
class="symb_item" value="'%BWAUTHPASSWORD-33%'" />
<SYMB_ITEM ID="BS_VOIP_Data.astVoipAccounts[32].aucS_SIP_USER_ID[0]"
class="symb_item" value="'%BWLINPORT-33%'" />
<SYMB_ITEM ID="BS_VOIP_Data.astVoipAccounts[32].ucB_SIP_ACCOUNT_IS_ACTIVE_1"
class="symb_item" value="%BWLIN-BINARY-33%" />
<SYMB_ITEM ID="BS_VOIP_Data.astVoipAccounts[32].ucB_VOIP_NET_AM_ENABLED_1"
class="symb_item" value="0" />

<!--VoIP 34 -->
<SYMB_ITEM ID="BS_VOIP_Data.astVoipAccounts[33].aucS_SIP_DISPLAYNAME[0]"
class="symb_item" value="'%BWNAME-34%'" />
<SYMB_ITEM ID="BS_VOIP_Data.astVoipAccounts[33].aucS_SIP_LOGIN_ID[0]"
class="symb_item" value="'%BWAUTHUSER-34%'" />
<SYMB_ITEM ID="BS_VOIP_Data.astVoipAccounts[33].aucS_SIP_PASSWORD[0]"
class="symb_item" value="'%BWAUTHPASSWORD-34%'" />
<SYMB_ITEM ID="BS_VOIP_Data.astVoipAccounts[33].aucS_SIP_USER_ID[0]"
class="symb_item" value="'%BWLINPORT-34%'" />
<SYMB_ITEM ID="BS_VOIP_Data.astVoipAccounts[33].ucB_SIP_ACCOUNT_IS_ACTIVE_1"
class="symb_item" value="%BWLIN-BINARY-34%" />
<SYMB_ITEM ID="BS_VOIP_Data.astVoipAccounts[33].ucB_VOIP_NET_AM_ENABLED_1"
class="symb_item" value="0" />

<!--VoIP 35 -->
<SYMB_ITEM ID="BS_VOIP_Data.astVoipAccounts[34].aucS_SIP_DISPLAYNAME[0]"
class="symb_item" value="'%BWNAME-35%'" />
```

```
<SYMB_ITEM ID="BS_VOIP_Data.astVoipAccounts[34].aucS_SIP_LOGIN_ID[0]"
class="symb_item" value="'%BWAUTHUSER-35%'" />
<SYMB_ITEM ID="BS_VOIP_Data.astVoipAccounts[34].aucS_SIP_PASSWORD[0]"
class="symb_item" value="'%BWAUTHPASSWORD-35%'" />
<SYMB_ITEM ID="BS_VOIP_Data.astVoipAccounts[34].aucS_SIP_USER_ID[0]"
class="symb_item" value="'%BWLINPORT-35%'" />
<SYMB_ITEM ID="BS_VOIP_Data.astVoipAccounts[34].ucB_SIP_ACCOUNT_IS_ACTIVE_1"
class="symb_item" value="%BWLIN-BINARY-35%" />
<SYMB_ITEM ID="BS_VOIP_Data.astVoipAccounts[34].ucB_VOIP_NET_AM_ENABLED_1"
class="symb_item" value="0" />

<!--VoIP 36 -->
<SYMB_ITEM ID="BS_VOIP_Data.astVoipAccounts[35].aucS_SIP_DISPLAYNAME[0]"
class="symb_item" value="'%BWNAME-36%'" />
<SYMB_ITEM ID="BS_VOIP_Data.astVoipAccounts[35].aucS_SIP_LOGIN_ID[0]"
class="symb_item" value="'%BWAUTHUSER-36%'" />
<SYMB_ITEM ID="BS_VOIP_Data.astVoipAccounts[35].aucS_SIP_PASSWORD[0]"
class="symb_item" value="'%BWAUTHPASSWORD-36%'" />
<SYMB_ITEM ID="BS_VOIP_Data.astVoipAccounts[35].aucS_SIP_USER_ID[0]"
class="symb_item" value="'%BWLINPORT-36%'" />
<SYMB_ITEM ID="BS_VOIP_Data.astVoipAccounts[35].ucB_SIP_ACCOUNT_IS_ACTIVE_1"
class="symb_item" value="%BWLIN-BINARY-36%" />
<SYMB_ITEM ID="BS_VOIP_Data.astVoipAccounts[35].ucB_VOIP_NET_AM_ENABLED_1"
class="symb_item" value="0" />

<!--VoIP 37 -->
<SYMB_ITEM ID="BS_VOIP_Data.astVoipAccounts[36].aucS_SIP_DISPLAYNAME[0]"
class="symb_item" value="'%BWNAME-37%'" />
<SYMB_ITEM ID="BS_VOIP_Data.astVoipAccounts[36].aucS_SIP_LOGIN_ID[0]"
class="symb_item" value="'%BWAUTHUSER-37%'" />
<SYMB_ITEM ID="BS_VOIP_Data.astVoipAccounts[36].aucS_SIP_PASSWORD[0]"
class="symb_item" value="'%BWAUTHPASSWORD-37%'" />
<SYMB_ITEM ID="BS_VOIP_Data.astVoipAccounts[36].aucS_SIP_USER_ID[0]"
class="symb_item" value="'%BWLINPORT-37%'" />
<SYMB_ITEM ID="BS_VOIP_Data.astVoipAccounts[36].ucB_SIP_ACCOUNT_IS_ACTIVE_1"
class="symb_item" value="%BWLIN-BINARY-37%" />
<SYMB_ITEM ID="BS_VOIP_Data.astVoipAccounts[36].ucB_VOIP_NET_AM_ENABLED_1"
class="symb_item" value="0" />

<!--VoIP 38 -->
<SYMB_ITEM ID="BS_VOIP_Data.astVoipAccounts[37].aucS_SIP_DISPLAYNAME[0]"
class="symb_item" value="'%BWNAME-38%'" />
<SYMB_ITEM ID="BS_VOIP_Data.astVoipAccounts[37].aucS_SIP_LOGIN_ID[0]"
class="symb_item" value="'%BWAUTHUSER-38%'" />
<SYMB_ITEM ID="BS_VOIP_Data.astVoipAccounts[37].aucS_SIP_PASSWORD[0]"
class="symb_item" value="'%BWAUTHPASSWORD-38%'" />
<SYMB_ITEM ID="BS_VOIP_Data.astVoipAccounts[37].aucS_SIP_USER_ID[0]"
class="symb_item" value="'%BWLINPORT-38%'" />
<SYMB_ITEM ID="BS_VOIP_Data.astVoipAccounts[37].ucB_SIP_ACCOUNT_IS_ACTIVE_1"
class="symb_item" value="%BWLIN-BINARY-38%" />
<SYMB_ITEM ID="BS_VOIP_Data.astVoipAccounts[37].ucB_VOIP_NET_AM_ENABLED_1"
class="symb_item" value="0" />

<!--VoIP 39 -->
<SYMB_ITEM ID="BS_VOIP_Data.astVoipAccounts[38].aucS_SIP_DISPLAYNAME[0]"
class="symb_item" value="'%BWNAME-39%'" />
<SYMB_ITEM ID="BS_VOIP_Data.astVoipAccounts[38].aucS_SIP_LOGIN_ID[0]"
class="symb_item" value="'%BWAUTHUSER-39%'" />
<SYMB_ITEM ID="BS_VOIP_Data.astVoipAccounts[38].aucS_SIP_PASSWORD[0]"
class="symb_item" value="'%BWAUTHPASSWORD-39%'" />
<SYMB_ITEM ID="BS_VOIP_Data.astVoipAccounts[38].aucS_SIP_USER_ID[0]"
class="symb_item" value="'%BWLINPORT-39%'" />
<SYMB_ITEM ID="BS_VOIP_Data.astVoipAccounts[38].ucB_SIP_ACCOUNT_IS_ACTIVE_1"
class="symb_item" value="%BWLIN-BINARY-39%" />
<SYMB_ITEM ID="BS_VOIP_Data.astVoipAccounts[38].ucB_VOIP_NET_AM_ENABLED_1"
class="symb_item" value="0" />

<!--VoIP 40 -->
<SYMB_ITEM ID="BS_VOIP_Data.astVoipAccounts[39].aucS_SIP_DISPLAYNAME[0]"
class="symb_item" value="'%BWNAME-40%'" />
```



```

<SYMB_ITEM ID="BS_VOIP_Data.astVoipAccounts[39].aucS_SIP_LOGIN_ID[0]"
class="symb_item" value="'%BWAUTHUSER-40%'" />
<SYMB_ITEM ID="BS_VOIP_Data.astVoipAccounts[39].aucS_SIP_PASSWORD[0]"
class="symb_item" value="'%BWAUTHPASSWORD-40%'" />
<SYMB_ITEM ID="BS_VOIP_Data.astVoipAccounts[39].aucS_SIP_USER_ID[0]"
class="symb_item" value="'%BWLINPORT-40%'" />
<SYMB_ITEM ID="BS_VOIP_Data.astVoipAccounts[39].ucB_SIP_ACCOUNT_IS_ACTIVE_1"
class="symb_item" value="%BWLIN-BINARY-40%" />
<SYMB_ITEM ID="BS_VOIP_Data.astVoipAccounts[39].ucB_VOIP_NET_AM_ENABLED_1"
class="symb_item" value="0" />

<!--VoIP 41 -->
<SYMB_ITEM ID="BS_VOIP_Data.astVoipAccounts[40].aucS_SIP_DISPLAYNAME[0]"
class="symb_item" value="'%BWNAME-41%'" />
<SYMB_ITEM ID="BS_VOIP_Data.astVoipAccounts[40].aucS_SIP_LOGIN_ID[0]"
class="symb_item" value="'%BWAUTHUSER-41%'" />
<SYMB_ITEM ID="BS_VOIP_Data.astVoipAccounts[40].aucS_SIP_PASSWORD[0]"
class="symb_item" value="'%BWAUTHPASSWORD-41%'" />
<SYMB_ITEM ID="BS_VOIP_Data.astVoipAccounts[40].aucS_SIP_USER_ID[0]"
class="symb_item" value="'%BWLINPORT-41%'" />
<SYMB_ITEM ID="BS_VOIP_Data.astVoipAccounts[40].ucB_SIP_ACCOUNT_IS_ACTIVE_1"
class="symb_item" value="%BWLIN-BINARY-41%" />
<SYMB_ITEM ID="BS_VOIP_Data.astVoipAccounts[40].ucB_VOIP_NET_AM_ENABLED_1"
class="symb_item" value="0" />

<!--VoIP 42 -->
<SYMB_ITEM ID="BS_VOIP_Data.astVoipAccounts[41].aucS_SIP_DISPLAYNAME[0]"
class="symb_item" value="'%BWNAME-42%'" />
<SYMB_ITEM ID="BS_VOIP_Data.astVoipAccounts[41].aucS_SIP_LOGIN_ID[0]"
class="symb_item" value="'%BWAUTHUSER-42%'" />
<SYMB_ITEM ID="BS_VOIP_Data.astVoipAccounts[41].aucS_SIP_PASSWORD[0]"
class="symb_item" value="'%BWAUTHPASSWORD-42%'" />
<SYMB_ITEM ID="BS_VOIP_Data.astVoipAccounts[41].aucS_SIP_USER_ID[0]"
class="symb_item" value="'%BWLINPORT-42%'" />
<SYMB_ITEM ID="BS_VOIP_Data.astVoipAccounts[41].ucB_SIP_ACCOUNT_IS_ACTIVE_1"
class="symb_item" value="%BWLIN-BINARY-42%" />
<SYMB_ITEM ID="BS_VOIP_Data.astVoipAccounts[41].ucB_VOIP_NET_AM_ENABLED_1"
class="symb_item" value="0" />

<!--VoIP 43 -->
<SYMB_ITEM ID="BS_VOIP_Data.astVoipAccounts[42].aucS_SIP_DISPLAYNAME[0]"
class="symb_item" value="'%BWNAME-43%'" />
<SYMB_ITEM ID="BS_VOIP_Data.astVoipAccounts[42].aucS_SIP_LOGIN_ID[0]"
class="symb_item" value="'%BWAUTHUSER-43%'" />
<SYMB_ITEM ID="BS_VOIP_Data.astVoipAccounts[42].aucS_SIP_PASSWORD[0]"
class="symb_item" value="'%BWAUTHPASSWORD-43%'" />
<SYMB_ITEM ID="BS_VOIP_Data.astVoipAccounts[42].aucS_SIP_USER_ID[0]"
class="symb_item" value="'%BWLINPORT-43%'" />
<SYMB_ITEM ID="BS_VOIP_Data.astVoipAccounts[42].ucB_SIP_ACCOUNT_IS_ACTIVE_1"
class="symb_item" value="%BWLIN-BINARY-43%" />
<SYMB_ITEM ID="BS_VOIP_Data.astVoipAccounts[42].ucB_VOIP_NET_AM_ENABLED_1"
class="symb_item" value="0" />

<!--VoIP 44 -->
<SYMB_ITEM ID="BS_VOIP_Data.astVoipAccounts[43].aucS_SIP_DISPLAYNAME[0]"
class="symb_item" value="'%BWNAME-44%'" />
<SYMB_ITEM ID="BS_VOIP_Data.astVoipAccounts[43].aucS_SIP_LOGIN_ID[0]"
class="symb_item" value="'%BWAUTHUSER-44%'" />
<SYMB_ITEM ID="BS_VOIP_Data.astVoipAccounts[43].aucS_SIP_PASSWORD[0]"
class="symb_item" value="'%BWAUTHPASSWORD-44%'" />
<SYMB_ITEM ID="BS_VOIP_Data.astVoipAccounts[43].aucS_SIP_USER_ID[0]"
class="symb_item" value="'%BWLINPORT-44%'" />
<SYMB_ITEM ID="BS_VOIP_Data.astVoipAccounts[43].ucB_SIP_ACCOUNT_IS_ACTIVE_1"
class="symb_item" value="%BWLIN-BINARY-44%" />
<SYMB_ITEM ID="BS_VOIP_Data.astVoipAccounts[43].ucB_VOIP_NET_AM_ENABLED_1"
class="symb_item" value="0" />

<!--VoIP 45 -->
<SYMB_ITEM ID="BS_VOIP_Data.astVoipAccounts[44].aucS_SIP_DISPLAYNAME[0]"
class="symb_item" value="'%BWNAME-45%'" />

```

```
<SYMB_ITEM ID="BS_VOIP_Data.astVoipAccounts[44].aucS_SIP_LOGIN_ID[0]"
class="symb_item" value="'%BWAUTHUSER-45%'" />
<SYMB_ITEM ID="BS_VOIP_Data.astVoipAccounts[44].aucS_SIP_PASSWORD[0]"
class="symb_item" value="'%BWAUTHPASSWORD-45%'" />
<SYMB_ITEM ID="BS_VOIP_Data.astVoipAccounts[44].aucS_SIP_USER_ID[0]"
class="symb_item" value="'%BWLINPORT-45%'" />
<SYMB_ITEM ID="BS_VOIP_Data.astVoipAccounts[44].ucB_SIP_ACCOUNT_IS_ACTIVE_1"
class="symb_item" value="%BWLIN-BINARY-45%" />
<SYMB_ITEM ID="BS_VOIP_Data.astVoipAccounts[44].ucB_VOIP_NET_AM_ENABLED_1"
class="symb_item" value="0" />

<!--VoIP 46 -->
<SYMB_ITEM ID="BS_VOIP_Data.astVoipAccounts[45].aucS_SIP_DISPLAYNAME[0]"
class="symb_item" value="'%BWNAME-46%'" />
<SYMB_ITEM ID="BS_VOIP_Data.astVoipAccounts[45].aucS_SIP_LOGIN_ID[0]"
class="symb_item" value="'%BWAUTHUSER-46%'" />
<SYMB_ITEM ID="BS_VOIP_Data.astVoipAccounts[45].aucS_SIP_PASSWORD[0]"
class="symb_item" value="'%BWAUTHPASSWORD-46%'" />
<SYMB_ITEM ID="BS_VOIP_Data.astVoipAccounts[45].aucS_SIP_USER_ID[0]"
class="symb_item" value="'%BWLINPORT-46%'" />
<SYMB_ITEM ID="BS_VOIP_Data.astVoipAccounts[45].ucB_SIP_ACCOUNT_IS_ACTIVE_1"
class="symb_item" value="%BWLIN-BINARY-46%" />
<SYMB_ITEM ID="BS_VOIP_Data.astVoipAccounts[45].ucB_VOIP_NET_AM_ENABLED_1"
class="symb_item" value="0" />

<!--VoIP 47 -->
<SYMB_ITEM ID="BS_VOIP_Data.astVoipAccounts[46].aucS_SIP_DISPLAYNAME[0]"
class="symb_item" value="'%BWNAME-47%'" />
<SYMB_ITEM ID="BS_VOIP_Data.astVoipAccounts[46].aucS_SIP_LOGIN_ID[0]"
class="symb_item" value="'%BWAUTHUSER-47%'" />
<SYMB_ITEM ID="BS_VOIP_Data.astVoipAccounts[46].aucS_SIP_PASSWORD[0]"
class="symb_item" value="'%BWAUTHPASSWORD-47%'" />
<SYMB_ITEM ID="BS_VOIP_Data.astVoipAccounts[46].aucS_SIP_USER_ID[0]"
class="symb_item" value="'%BWLINPORT-47%'" />
<SYMB_ITEM ID="BS_VOIP_Data.astVoipAccounts[46].ucB_SIP_ACCOUNT_IS_ACTIVE_1"
class="symb_item" value="%BWLIN-BINARY-47%" />
<SYMB_ITEM ID="BS_VOIP_Data.astVoipAccounts[46].ucB_VOIP_NET_AM_ENABLED_1"
class="symb_item" value="0" />

<!--VoIP 48 -->
<SYMB_ITEM ID="BS_VOIP_Data.astVoipAccounts[47].aucS_SIP_DISPLAYNAME[0]"
class="symb_item" value="'%BWNAME-48%'" />
<SYMB_ITEM ID="BS_VOIP_Data.astVoipAccounts[47].aucS_SIP_LOGIN_ID[0]"
class="symb_item" value="'%BWAUTHUSER-48%'" />
<SYMB_ITEM ID="BS_VOIP_Data.astVoipAccounts[47].aucS_SIP_PASSWORD[0]"
class="symb_item" value="'%BWAUTHPASSWORD-48%'" />
<SYMB_ITEM ID="BS_VOIP_Data.astVoipAccounts[47].aucS_SIP_USER_ID[0]"
class="symb_item" value="'%BWLINPORT-48%'" />
<SYMB_ITEM ID="BS_VOIP_Data.astVoipAccounts[47].ucB_SIP_ACCOUNT_IS_ACTIVE_1"
class="symb_item" value="%BWLIN-BINARY-48%" />
<SYMB_ITEM ID="BS_VOIP_Data.astVoipAccounts[47].ucB_VOIP_NET_AM_ENABLED_1"
class="symb_item" value="0" />

<!--VoIP 49 -->
<SYMB_ITEM ID="BS_VOIP_Data.astVoipAccounts[48].aucS_SIP_DISPLAYNAME[0]"
class="symb_item" value="'%BWNAME-49%'" />
<SYMB_ITEM ID="BS_VOIP_Data.astVoipAccounts[48].aucS_SIP_LOGIN_ID[0]"
class="symb_item" value="'%BWAUTHUSER-49%'" />
<SYMB_ITEM ID="BS_VOIP_Data.astVoipAccounts[48].aucS_SIP_PASSWORD[0]"
class="symb_item" value="'%BWAUTHPASSWORD-49%'" />
<SYMB_ITEM ID="BS_VOIP_Data.astVoipAccounts[48].aucS_SIP_USER_ID[0]"
class="symb_item" value="'%BWLINPORT-49%'" />
<SYMB_ITEM ID="BS_VOIP_Data.astVoipAccounts[48].ucB_SIP_ACCOUNT_IS_ACTIVE_1"
class="symb_item" value="%BWLIN-BINARY-49%" />
<SYMB_ITEM ID="BS_VOIP_Data.astVoipAccounts[48].ucB_VOIP_NET_AM_ENABLED_1"
class="symb_item" value="0" />
<SYMB_ITEM ID="BS_VOIP_Data.astVoipAccounts[48].aucS_SIP_ACCOUNT_NAME_1[0]"
class="symb_item" value="'%CONNECTION_NAME_49%'" />
<!--VoIP 50 -->
<SYMB_ITEM ID="BS_VOIP_Data.astVoipAccounts[49].aucS_SIP_DISPLAYNAME[0]"
class="symb_item" value="'%BWNAME-50%'" />
```



```

<SYMB_ITEM ID="BS_VOIP_Data.astVoipAccounts[49].aucS_SIP_LOGIN_ID[0]"
class="symb_item" value="'%BWAUTHUSER-50%'" />
<SYMB_ITEM ID="BS_VOIP_Data.astVoipAccounts[49].aucS_SIP_PASSWORD[0]"
class="symb_item" value="'%BWAUTHPASSWORD-50%'" />
<SYMB_ITEM ID="BS_VOIP_Data.astVoipAccounts[49].aucS_SIP_USER_ID[0]"
class="symb_item" value="'%BWLINPORT-50%'" />
<SYMB_ITEM ID="BS_VOIP_Data.astVoipAccounts[49].ucB_SIP_ACCOUNT_IS_ACTIVE_1"
class="symb_item" value="%BWLIN-BINARY-50%" />
<SYMB_ITEM ID="BS_VOIP_Data.astVoipAccounts[49].ucB_VOIP_NET_AM_ENABLED_1"
class="symb_item" value="0" />
<SYMB_ITEM ID="BS_VOIP_Data.astVoipAccounts[49].aucS_SIP_ACCOUNT_NAME_1[0]"
class="symb_item" value="'%CONNECTION_NAME_50%'" />
<!--VoIP 51 -->
<SYMB_ITEM ID="BS_VOIP_Data.astVoipAccounts[50].aucS_SIP_DISPLAYNAME[0]"
class="symb_item" value="'%BWNAME-51%'" />
<SYMB_ITEM ID="BS_VOIP_Data.astVoipAccounts[50].aucS_SIP_LOGIN_ID[0]"
class="symb_item" value="'%BWAUTHUSER-51%'" />
<SYMB_ITEM ID="BS_VOIP_Data.astVoipAccounts[50].aucS_SIP_PASSWORD[0]"
class="symb_item" value="'%BWAUTHPASSWORD-51%'" />
<SYMB_ITEM ID="BS_VOIP_Data.astVoipAccounts[50].aucS_SIP_USER_ID[0]"
class="symb_item" value="'%BWLINPORT-51%'" />
<SYMB_ITEM ID="BS_VOIP_Data.astVoipAccounts[50].ucB_SIP_ACCOUNT_IS_ACTIVE_1"
class="symb_item" value="%BWLIN-BINARY-51%" />
<SYMB_ITEM ID="BS_VOIP_Data.astVoipAccounts[50].ucB_VOIP_NET_AM_ENABLED_1"
class="symb_item" value="0" />

<!--VoIP 52 -->
<SYMB_ITEM ID="BS_VOIP_Data.astVoipAccounts[51].aucS_SIP_DISPLAYNAME[0]"
class="symb_item" value="'%BWNAME-52%'" />
<SYMB_ITEM ID="BS_VOIP_Data.astVoipAccounts[51].aucS_SIP_LOGIN_ID[0]"
class="symb_item" value="'%BWAUTHUSER-52%'" />
<SYMB_ITEM ID="BS_VOIP_Data.astVoipAccounts[51].aucS_SIP_PASSWORD[0]"
class="symb_item" value="'%BWAUTHPASSWORD-52%'" />
<SYMB_ITEM ID="BS_VOIP_Data.astVoipAccounts[51].aucS_SIP_USER_ID[0]"
class="symb_item" value="'%BWLINPORT-52%'" />
<SYMB_ITEM ID="BS_VOIP_Data.astVoipAccounts[51].ucB_SIP_ACCOUNT_IS_ACTIVE_1"
class="symb_item" value="%BWLIN-BINARY-52%" />
<SYMB_ITEM ID="BS_VOIP_Data.astVoipAccounts[51].ucB_VOIP_NET_AM_ENABLED_1"
class="symb_item" value="0" />

<!--VoIP 53 -->
<SYMB_ITEM ID="BS_VOIP_Data.astVoipAccounts[52].aucS_SIP_DISPLAYNAME[0]"
class="symb_item" value="'%BWNAME-53%'" />
<SYMB_ITEM ID="BS_VOIP_Data.astVoipAccounts[52].aucS_SIP_LOGIN_ID[0]"
class="symb_item" value="'%BWAUTHUSER-53%'" />
<SYMB_ITEM ID="BS_VOIP_Data.astVoipAccounts[52].aucS_SIP_PASSWORD[0]"
class="symb_item" value="'%BWAUTHPASSWORD-53%'" />
<SYMB_ITEM ID="BS_VOIP_Data.astVoipAccounts[52].aucS_SIP_USER_ID[0]"
class="symb_item" value="'%BWLINPORT-53%'" />
<SYMB_ITEM ID="BS_VOIP_Data.astVoipAccounts[52].ucB_SIP_ACCOUNT_IS_ACTIVE_1"
class="symb_item" value="%BWLIN-BINARY-53%" />
<SYMB_ITEM ID="BS_VOIP_Data.astVoipAccounts[52].ucB_VOIP_NET_AM_ENABLED_1"
class="symb_item" value="0" />

<!--VoIP 54 -->
<SYMB_ITEM ID="BS_VOIP_Data.astVoipAccounts[53].aucS_SIP_DISPLAYNAME[0]"
class="symb_item" value="'%BWNAME-54%'" />
<SYMB_ITEM ID="BS_VOIP_Data.astVoipAccounts[53].aucS_SIP_LOGIN_ID[0]"
class="symb_item" value="'%BWAUTHUSER-54%'" />
<SYMB_ITEM ID="BS_VOIP_Data.astVoipAccounts[53].aucS_SIP_PASSWORD[0]"
class="symb_item" value="'%BWAUTHPASSWORD-54%'" />
<SYMB_ITEM ID="BS_VOIP_Data.astVoipAccounts[53].aucS_SIP_USER_ID[0]"
class="symb_item" value="'%BWLINPORT-54%'" />
<SYMB_ITEM ID="BS_VOIP_Data.astVoipAccounts[53].ucB_SIP_ACCOUNT_IS_ACTIVE_1"
class="symb_item" value="%BWLIN-BINARY-54%" />
<SYMB_ITEM ID="BS_VOIP_Data.astVoipAccounts[53].ucB_VOIP_NET_AM_ENABLED_1"
class="symb_item" value="0" />

<!--VoIP 55 -->
<SYMB_ITEM ID="BS_VOIP_Data.astVoipAccounts[54].aucS_SIP_DISPLAYNAME[0]"
class="symb_item" value="'%BWNAME-55%'" />

```

```
<SYMB_ITEM ID="BS_VOIP_Data.astVoipAccounts[54].aucS_SIP_LOGIN_ID[0]"
class="symb_item" value="'%BWAUTHUSER-55%'" />
<SYMB_ITEM ID="BS_VOIP_Data.astVoipAccounts[54].aucS_SIP_PASSWORD[0]"
class="symb_item" value="'%BWAUTHPASSWORD-55%'" />
<SYMB_ITEM ID="BS_VOIP_Data.astVoipAccounts[54].aucS_SIP_USER_ID[0]"
class="symb_item" value="'%BWLINPORT-55%'" />
<SYMB_ITEM ID="BS_VOIP_Data.astVoipAccounts[54].ucB_SIP_ACCOUNT_IS_ACTIVE_1"
class="symb_item" value="%BWLIN-BINARY-55%" />
<SYMB_ITEM ID="BS_VOIP_Data.astVoipAccounts[54].ucB_VOIP_NET_AM_ENABLED_1"
class="symb_item" value="0" />

<!--VoIP 56 -->
<SYMB_ITEM ID="BS_VOIP_Data.astVoipAccounts[55].aucS_SIP_DISPLAYNAME[0]"
class="symb_item" value="'%BWNAME-56%'" />
<SYMB_ITEM ID="BS_VOIP_Data.astVoipAccounts[55].aucS_SIP_LOGIN_ID[0]"
class="symb_item" value="'%BWAUTHUSER-56%'" />
<SYMB_ITEM ID="BS_VOIP_Data.astVoipAccounts[55].aucS_SIP_PASSWORD[0]"
class="symb_item" value="'%BWAUTHPASSWORD-56%'" />
<SYMB_ITEM ID="BS_VOIP_Data.astVoipAccounts[55].aucS_SIP_USER_ID[0]"
class="symb_item" value="'%BWLINPORT-56%'" />
<SYMB_ITEM ID="BS_VOIP_Data.astVoipAccounts[55].ucB_SIP_ACCOUNT_IS_ACTIVE_1"
class="symb_item" value="%BWLIN-BINARY-56%" />
<SYMB_ITEM ID="BS_VOIP_Data.astVoipAccounts[55].ucB_VOIP_NET_AM_ENABLED_1"
class="symb_item" value="0" />

<!--VoIP 57 -->
<SYMB_ITEM ID="BS_VOIP_Data.astVoipAccounts[56].aucS_SIP_DISPLAYNAME[0]"
class="symb_item" value="'%BWNAME-57%'" />
<SYMB_ITEM ID="BS_VOIP_Data.astVoipAccounts[56].aucS_SIP_LOGIN_ID[0]"
class="symb_item" value="'%BWAUTHUSER-57%'" />
<SYMB_ITEM ID="BS_VOIP_Data.astVoipAccounts[56].aucS_SIP_PASSWORD[0]"
class="symb_item" value="'%BWAUTHPASSWORD-57%'" />
<SYMB_ITEM ID="BS_VOIP_Data.astVoipAccounts[56].aucS_SIP_USER_ID[0]"
class="symb_item" value="'%BWLINPORT-57%'" />
<SYMB_ITEM ID="BS_VOIP_Data.astVoipAccounts[56].ucB_SIP_ACCOUNT_IS_ACTIVE_1"
class="symb_item" value="%BWLIN-BINARY-57%" />
<SYMB_ITEM ID="BS_VOIP_Data.astVoipAccounts[56].ucB_VOIP_NET_AM_ENABLED_1"
class="symb_item" value="0" />

<!--VoIP 58 -->
<SYMB_ITEM ID="BS_VOIP_Data.astVoipAccounts[57].aucS_SIP_DISPLAYNAME[0]"
class="symb_item" value="'%BWNAME-58%'" />
<SYMB_ITEM ID="BS_VOIP_Data.astVoipAccounts[57].aucS_SIP_LOGIN_ID[0]"
class="symb_item" value="'%BWAUTHUSER-58%'" />
<SYMB_ITEM ID="BS_VOIP_Data.astVoipAccounts[57].aucS_SIP_PASSWORD[0]"
class="symb_item" value="'%BWAUTHPASSWORD-58%'" />
<SYMB_ITEM ID="BS_VOIP_Data.astVoipAccounts[57].aucS_SIP_USER_ID[0]"
class="symb_item" value="'%BWLINPORT-58%'" />
<SYMB_ITEM ID="BS_VOIP_Data.astVoipAccounts[57].ucB_SIP_ACCOUNT_IS_ACTIVE_1"
class="symb_item" value="%BWLIN-BINARY-58%" />
<SYMB_ITEM ID="BS_VOIP_Data.astVoipAccounts[57].ucB_VOIP_NET_AM_ENABLED_1"
class="symb_item" value="0" />

<!--VoIP 59 -->
<SYMB_ITEM ID="BS_VOIP_Data.astVoipAccounts[58].aucS_SIP_DISPLAYNAME[0]"
class="symb_item" value="'%BWNAME-59%'" />
<SYMB_ITEM ID="BS_VOIP_Data.astVoipAccounts[58].aucS_SIP_LOGIN_ID[0]"
class="symb_item" value="'%BWAUTHUSER-59%'" />
<SYMB_ITEM ID="BS_VOIP_Data.astVoipAccounts[58].aucS_SIP_PASSWORD[0]"
class="symb_item" value="'%BWAUTHPASSWORD-59%'" />
<SYMB_ITEM ID="BS_VOIP_Data.astVoipAccounts[58].aucS_SIP_USER_ID[0]"
class="symb_item" value="'%BWLINPORT-59%'" />
<SYMB_ITEM ID="BS_VOIP_Data.astVoipAccounts[58].ucB_SIP_ACCOUNT_IS_ACTIVE_1"
class="symb_item" value="%BWLIN-BINARY-59%" />
<SYMB_ITEM ID="BS_VOIP_Data.astVoipAccounts[58].ucB_VOIP_NET_AM_ENABLED_1"
class="symb_item" value="0" />
<SYMB_ITEM ID="BS_VOIP_Data.astVoipAccounts[58].aucS_SIP_ACCOUNT_NAME_1[0]"
class="symb_item" value="'%CONNECTION_NAME_59%'" />
<!--VoIP 60 -->
<SYMB_ITEM ID="BS_VOIP_Data.astVoipAccounts[59].aucS_SIP_DISPLAYNAME[0]"
class="symb_item" value="'%BWNAME-60%'" />
```

```
<SYMB_ITEM ID="BS_VOIP_Data.astVoipAccounts[59].aucS_SIP_LOGIN_ID[0]"
class="symb_item" value="'%BWAUTHUSER-60%'" />
<SYMB_ITEM ID="BS_VOIP_Data.astVoipAccounts[59].aucS_SIP_PASSWORD[0]"
class="symb_item" value="'%BWAUTHPASSWORD-60%'" />
<SYMB_ITEM ID="BS_VOIP_Data.astVoipAccounts[59].aucS_SIP_USER_ID[0]"
class="symb_item" value="'%BWLINPORT-60%'" />
<SYMB_ITEM ID="BS_VOIP_Data.astVoipAccounts[59].ucB_SIP_ACCOUNT_IS_ACTIVE_1"
class="symb_item" value="%BWLIN-BINARY-60%" />
<SYMB_ITEM ID="BS_VOIP_Data.astVoipAccounts[59].ucB_VOIP_NET_AM_ENABLED_1"
class="symb_item" value="0" />

<!--VoIP 61 -->
<SYMB_ITEM ID="BS_VOIP_Data.astVoipAccounts[60].aucS_SIP_DISPLAYNAME[0]"
class="symb_item" value="'%BWNAME-61%'" />
<SYMB_ITEM ID="BS_VOIP_Data.astVoipAccounts[60].aucS_SIP_LOGIN_ID[0]"
class="symb_item" value="'%BWAUTHUSER-61%'" />
<SYMB_ITEM ID="BS_VOIP_Data.astVoipAccounts[60].aucS_SIP_PASSWORD[0]"
class="symb_item" value="'%BWAUTHPASSWORD-61%'" />
<SYMB_ITEM ID="BS_VOIP_Data.astVoipAccounts[60].aucS_SIP_USER_ID[0]"
class="symb_item" value="'%BWLINPORT-61%'" />
<SYMB_ITEM ID="BS_VOIP_Data.astVoipAccounts[60].ucB_SIP_ACCOUNT_IS_ACTIVE_1"
class="symb_item" value="%BWLIN-BINARY-61%" />
<SYMB_ITEM ID="BS_VOIP_Data.astVoipAccounts[60].ucB_VOIP_NET_AM_ENABLED_1"
class="symb_item" value="0" />

<!--VoIP 62 -->
<SYMB_ITEM ID="BS_VOIP_Data.astVoipAccounts[61].aucS_SIP_DISPLAYNAME[0]"
class="symb_item" value="'%BWNAME-62%'" />
<SYMB_ITEM ID="BS_VOIP_Data.astVoipAccounts[61].aucS_SIP_LOGIN_ID[0]"
class="symb_item" value="'%BWAUTHUSER-62%'" />
<SYMB_ITEM ID="BS_VOIP_Data.astVoipAccounts[61].aucS_SIP_PASSWORD[0]"
class="symb_item" value="'%BWAUTHPASSWORD-62%'" />
<SYMB_ITEM ID="BS_VOIP_Data.astVoipAccounts[61].aucS_SIP_USER_ID[0]"
class="symb_item" value="'%BWLINPORT-62%'" />
<SYMB_ITEM ID="BS_VOIP_Data.astVoipAccounts[61].ucB_SIP_ACCOUNT_IS_ACTIVE_1"
class="symb_item" value="%BWLIN-BINARY-62%" />
<SYMB_ITEM ID="BS_VOIP_Data.astVoipAccounts[61].ucB_VOIP_NET_AM_ENABLED_1"
class="symb_item" value="0" />

<!--VoIP 63 -->
<SYMB_ITEM ID="BS_VOIP_Data.astVoipAccounts[62].aucS_SIP_DISPLAYNAME[0]"
class="symb_item" value="'%BWNAME-63%'" />
<SYMB_ITEM ID="BS_VOIP_Data.astVoipAccounts[62].aucS_SIP_LOGIN_ID[0]"
class="symb_item" value="'%BWAUTHUSER-63%'" />
<SYMB_ITEM ID="BS_VOIP_Data.astVoipAccounts[62].aucS_SIP_PASSWORD[0]"
class="symb_item" value="'%BWAUTHPASSWORD-63%'" />
<SYMB_ITEM ID="BS_VOIP_Data.astVoipAccounts[62].aucS_SIP_USER_ID[0]"
class="symb_item" value="'%BWLINPORT-63%'" />
<SYMB_ITEM ID="BS_VOIP_Data.astVoipAccounts[62].ucB_SIP_ACCOUNT_IS_ACTIVE_1"
class="symb_item" value="%BWLIN-BINARY-63%" />
<SYMB_ITEM ID="BS_VOIP_Data.astVoipAccounts[62].ucB_VOIP_NET_AM_ENABLED_1"
class="symb_item" value="0" />

<!--VoIP 64 -->
<SYMB_ITEM ID="BS_VOIP_Data.astVoipAccounts[63].aucS_SIP_DISPLAYNAME[0]"
class="symb_item" value="'%BWNAME-64%'" />
<SYMB_ITEM ID="BS_VOIP_Data.astVoipAccounts[63].aucS_SIP_LOGIN_ID[0]"
class="symb_item" value="'%BWAUTHUSER-64%'" />
<SYMB_ITEM ID="BS_VOIP_Data.astVoipAccounts[63].aucS_SIP_PASSWORD[0]"
class="symb_item" value="'%BWAUTHPASSWORD-64%'" />
<SYMB_ITEM ID="BS_VOIP_Data.astVoipAccounts[63].aucS_SIP_USER_ID[0]"
class="symb_item" value="'%BWLINPORT-64%'" />
<SYMB_ITEM ID="BS_VOIP_Data.astVoipAccounts[63].ucB_SIP_ACCOUNT_IS_ACTIVE_1"
class="symb_item" value="%BWLIN-BINARY-64%" />
<SYMB_ITEM ID="BS_VOIP_Data.astVoipAccounts[63].ucB_VOIP_NET_AM_ENABLED_1"
class="symb_item" value="0" />

<!--VoIP 65 -->
<SYMB_ITEM ID="BS_VOIP_Data.astVoipAccounts[64].aucS_SIP_DISPLAYNAME[0]"
class="symb_item" value="'%BWNAME-65%'" />
```

```
<SYMB_ITEM ID="BS_VOIP_Data.astVoipAccounts[64].aucS_SIP_LOGIN_ID[0]"
class="symb_item" value="%BWAUTHUSER-65%"/>
<SYMB_ITEM ID="BS_VOIP_Data.astVoipAccounts[64].aucS_SIP_PASSWORD[0]"
class="symb_item" value="%BWAUTHPASSWORD-65%"/>
<SYMB_ITEM ID="BS_VOIP_Data.astVoipAccounts[64].aucS_SIP_USER_ID[0]"
class="symb_item" value="%BWLINPORT-65%"/>
<SYMB_ITEM ID="BS_VOIP_Data.astVoipAccounts[64].ucB_SIP_ACCOUNT_IS_ACTIVE_1"
class="symb_item" value="%BWLIN-BINARY-65%"/>
<SYMB_ITEM ID="BS_VOIP_Data.astVoipAccounts[64].ucB_VOIP_NET_AM_ENABLED_1"
class="symb_item" value="0"/>

<!--VoIP 66 -->
<SYMB_ITEM ID="BS_VOIP_Data.astVoipAccounts[65].aucS_SIP_DISPLAYNAME[0]"
class="symb_item" value="%BWNAME-66%"/>
<SYMB_ITEM ID="BS_VOIP_Data.astVoipAccounts[65].aucS_SIP_LOGIN_ID[0]"
class="symb_item" value="%BWAUTHUSER-66%"/>
<SYMB_ITEM ID="BS_VOIP_Data.astVoipAccounts[65].aucS_SIP_PASSWORD[0]"
class="symb_item" value="%BWAUTHPASSWORD-66%"/>
<SYMB_ITEM ID="BS_VOIP_Data.astVoipAccounts[65].aucS_SIP_USER_ID[0]"
class="symb_item" value="%BWLINPORT-66%"/>
<SYMB_ITEM ID="BS_VOIP_Data.astVoipAccounts[65].ucB_SIP_ACCOUNT_IS_ACTIVE_1"
class="symb_item" value="%BWLIN-BINARY-66%"/>
<SYMB_ITEM ID="BS_VOIP_Data.astVoipAccounts[65].ucB_VOIP_NET_AM_ENABLED_1"
class="symb_item" value="0"/>

<!--VoIP 67 -->
<SYMB_ITEM ID="BS_VOIP_Data.astVoipAccounts[66].aucS_SIP_DISPLAYNAME[0]"
class="symb_item" value="%BWNAME-67%"/>
<SYMB_ITEM ID="BS_VOIP_Data.astVoipAccounts[66].aucS_SIP_LOGIN_ID[0]"
class="symb_item" value="%BWAUTHUSER-67%"/>
<SYMB_ITEM ID="BS_VOIP_Data.astVoipAccounts[66].aucS_SIP_PASSWORD[0]"
class="symb_item" value="%BWAUTHPASSWORD-67%"/>
<SYMB_ITEM ID="BS_VOIP_Data.astVoipAccounts[66].aucS_SIP_USER_ID[0]"
class="symb_item" value="%BWLINPORT-67%"/>
<SYMB_ITEM ID="BS_VOIP_Data.astVoipAccounts[66].ucB_SIP_ACCOUNT_IS_ACTIVE_1"
class="symb_item" value="%BWLIN-BINARY-67%"/>
<SYMB_ITEM ID="BS_VOIP_Data.astVoipAccounts[66].ucB_VOIP_NET_AM_ENABLED_1"
class="symb_item" value="0"/>

<!--VoIP 68 -->
<SYMB_ITEM ID="BS_VOIP_Data.astVoipAccounts[67].aucS_SIP_DISPLAYNAME[0]"
class="symb_item" value="%BWNAME-68%"/>
<SYMB_ITEM ID="BS_VOIP_Data.astVoipAccounts[67].aucS_SIP_LOGIN_ID[0]"
class="symb_item" value="%BWAUTHUSER-68%"/>
<SYMB_ITEM ID="BS_VOIP_Data.astVoipAccounts[67].aucS_SIP_PASSWORD[0]"
class="symb_item" value="%BWAUTHPASSWORD-68%"/>
<SYMB_ITEM ID="BS_VOIP_Data.astVoipAccounts[67].aucS_SIP_USER_ID[0]"
class="symb_item" value="%BWLINPORT-68%"/>
<SYMB_ITEM ID="BS_VOIP_Data.astVoipAccounts[67].ucB_SIP_ACCOUNT_IS_ACTIVE_1"
class="symb_item" value="%BWLIN-BINARY-68%"/>
<SYMB_ITEM ID="BS_VOIP_Data.astVoipAccounts[67].ucB_VOIP_NET_AM_ENABLED_1"
class="symb_item" value="0"/>

<!--VoIP 69 -->
<SYMB_ITEM ID="BS_VOIP_Data.astVoipAccounts[68].aucS_SIP_DISPLAYNAME[0]"
class="symb_item" value="%BWNAME-69%"/>
<SYMB_ITEM ID="BS_VOIP_Data.astVoipAccounts[68].aucS_SIP_LOGIN_ID[0]"
class="symb_item" value="%BWAUTHUSER-69%"/>
<SYMB_ITEM ID="BS_VOIP_Data.astVoipAccounts[68].aucS_SIP_PASSWORD[0]"
class="symb_item" value="%BWAUTHPASSWORD-69%"/>
<SYMB_ITEM ID="BS_VOIP_Data.astVoipAccounts[68].aucS_SIP_USER_ID[0]"
class="symb_item" value="%BWLINPORT-69%"/>
<SYMB_ITEM ID="BS_VOIP_Data.astVoipAccounts[68].ucB_SIP_ACCOUNT_IS_ACTIVE_1"
class="symb_item" value="%BWLIN-BINARY-69%"/>
<SYMB_ITEM ID="BS_VOIP_Data.astVoipAccounts[68].ucB_VOIP_NET_AM_ENABLED_1"
class="symb_item" value="0"/>

<!--VoIP 70 -->
<SYMB_ITEM ID="BS_VOIP_Data.astVoipAccounts[69].aucS_SIP_DISPLAYNAME[0]"
class="symb_item" value="%BWNAME-70%"/>
```

```
<SYMB_ITEM ID="BS_VOIP_Data.astVoipAccounts[69].aucS_SIP_LOGIN_ID[0]"
class="symb_item" value="'%BWAUTHUSER-70%'" />
<SYMB_ITEM ID="BS_VOIP_Data.astVoipAccounts[69].aucS_SIP_PASSWORD[0]"
class="symb_item" value="'%BWAUTHPASSWORD-70%'" />
<SYMB_ITEM ID="BS_VOIP_Data.astVoipAccounts[69].aucS_SIP_USER_ID[0]"
class="symb_item" value="'%BWLINPORT-70%'" />
<SYMB_ITEM ID="BS_VOIP_Data.astVoipAccounts[69].ucB_SIP_ACCOUNT_IS_ACTIVE_1"
class="symb_item" value="%BWLIN-BINARY-70%" />
<SYMB_ITEM ID="BS_VOIP_Data.astVoipAccounts[69].ucB_VOIP_NET_AM_ENABLED_1"
class="symb_item" value="0" />

<!--VoIP 71 -->
<SYMB_ITEM ID="BS_VOIP_Data.astVoipAccounts[70].aucS_SIP_DISPLAYNAME[0]"
class="symb_item" value="'%BWNAME-71%'" />
<SYMB_ITEM ID="BS_VOIP_Data.astVoipAccounts[70].aucS_SIP_LOGIN_ID[0]"
class="symb_item" value="'%BWAUTHUSER-71%'" />
<SYMB_ITEM ID="BS_VOIP_Data.astVoipAccounts[70].aucS_SIP_PASSWORD[0]"
class="symb_item" value="'%BWAUTHPASSWORD-71%'" />
<SYMB_ITEM ID="BS_VOIP_Data.astVoipAccounts[70].aucS_SIP_USER_ID[0]"
class="symb_item" value="'%BWLINPORT-71%'" />
<SYMB_ITEM ID="BS_VOIP_Data.astVoipAccounts[70].ucB_SIP_ACCOUNT_IS_ACTIVE_1"
class="symb_item" value="%BWLIN-BINARY-71%" />
<SYMB_ITEM ID="BS_VOIP_Data.astVoipAccounts[70].ucB_VOIP_NET_AM_ENABLED_1"
class="symb_item" value="0" />

<!--VoIP 72 -->
<SYMB_ITEM ID="BS_VOIP_Data.astVoipAccounts[71].aucS_SIP_DISPLAYNAME[0]"
class="symb_item" value="'%BWNAME-72%'" />
<SYMB_ITEM ID="BS_VOIP_Data.astVoipAccounts[71].aucS_SIP_LOGIN_ID[0]"
class="symb_item" value="'%BWAUTHUSER-72%'" />
<SYMB_ITEM ID="BS_VOIP_Data.astVoipAccounts[71].aucS_SIP_PASSWORD[0]"
class="symb_item" value="'%BWAUTHPASSWORD-72%'" />
<SYMB_ITEM ID="BS_VOIP_Data.astVoipAccounts[71].aucS_SIP_USER_ID[0]"
class="symb_item" value="'%BWLINPORT-72%'" />
<SYMB_ITEM ID="BS_VOIP_Data.astVoipAccounts[71].ucB_SIP_ACCOUNT_IS_ACTIVE_1"
class="symb_item" value="%BWLIN-BINARY-72%" />
<SYMB_ITEM ID="BS_VOIP_Data.astVoipAccounts[71].ucB_VOIP_NET_AM_ENABLED_1"
class="symb_item" value="0" />

<!--VoIP 73 -->
<SYMB_ITEM ID="BS_VOIP_Data.astVoipAccounts[72].aucS_SIP_DISPLAYNAME[0]"
class="symb_item" value="'%BWNAME-73%'" />
<SYMB_ITEM ID="BS_VOIP_Data.astVoipAccounts[72].aucS_SIP_LOGIN_ID[0]"
class="symb_item" value="'%BWAUTHUSER-73%'" />
<SYMB_ITEM ID="BS_VOIP_Data.astVoipAccounts[72].aucS_SIP_PASSWORD[0]"
class="symb_item" value="'%BWAUTHPASSWORD-73%'" />
<SYMB_ITEM ID="BS_VOIP_Data.astVoipAccounts[72].aucS_SIP_USER_ID[0]"
class="symb_item" value="'%BWLINPORT-73%'" />
<SYMB_ITEM ID="BS_VOIP_Data.astVoipAccounts[72].ucB_SIP_ACCOUNT_IS_ACTIVE_1"
class="symb_item" value="%BWLIN-BINARY-73%" />
<SYMB_ITEM ID="BS_VOIP_Data.astVoipAccounts[72].ucB_VOIP_NET_AM_ENABLED_1"
class="symb_item" value="0" />

<!--VoIP 74 -->
<SYMB_ITEM ID="BS_VOIP_Data.astVoipAccounts[73].aucS_SIP_DISPLAYNAME[0]"
class="symb_item" value="'%BWNAME-74%'" />
<SYMB_ITEM ID="BS_VOIP_Data.astVoipAccounts[73].aucS_SIP_LOGIN_ID[0]"
class="symb_item" value="'%BWAUTHUSER-74%'" />
<SYMB_ITEM ID="BS_VOIP_Data.astVoipAccounts[73].aucS_SIP_PASSWORD[0]"
class="symb_item" value="'%BWAUTHPASSWORD-74%'" />
<SYMB_ITEM ID="BS_VOIP_Data.astVoipAccounts[73].aucS_SIP_USER_ID[0]"
class="symb_item" value="'%BWLINPORT-74%'" />
<SYMB_ITEM ID="BS_VOIP_Data.astVoipAccounts[73].ucB_SIP_ACCOUNT_IS_ACTIVE_1"
class="symb_item" value="%BWLIN-BINARY-74%" />
<SYMB_ITEM ID="BS_VOIP_Data.astVoipAccounts[73].ucB_VOIP_NET_AM_ENABLED_1"
class="symb_item" value="0" />

<!--VoIP 75 -->
<SYMB_ITEM ID="BS_VOIP_Data.astVoipAccounts[74].aucS_SIP_DISPLAYNAME[0]"
class="symb_item" value="'%BWNAME-75%'" />
```

```

<SYMB_ITEM ID="BS_VOIP_Data.astVoipAccounts[74].aucS_SIP_LOGIN_ID[0]"
class="symb_item" value="'%BWAUTHUSER-75%'" />
<SYMB_ITEM ID="BS_VOIP_Data.astVoipAccounts[74].aucS_SIP_PASSWORD[0]"
class="symb_item" value="'%BWAUTHPASSWORD-75%'" />
<SYMB_ITEM ID="BS_VOIP_Data.astVoipAccounts[74].aucS_SIP_USER_ID[0]"
class="symb_item" value="'%BWLINPORT-75%'" />
<SYMB_ITEM ID="BS_VOIP_Data.astVoipAccounts[74].ucB_SIP_ACCOUNT_IS_ACTIVE_1"
class="symb_item" value="%BWLIN-BINARY-75%" />
<SYMB_ITEM ID="BS_VOIP_Data.astVoipAccounts[74].ucB_VOIP_NET_AM_ENABLED_1"
class="symb_item" value="0" />

<!--VoIP 76 -->
<SYMB_ITEM ID="BS_VOIP_Data.astVoipAccounts[75].aucS_SIP_DISPLAYNAME[0]"
class="symb_item" value="'%BWNAME-76%'" />
<SYMB_ITEM ID="BS_VOIP_Data.astVoipAccounts[75].aucS_SIP_LOGIN_ID[0]"
class="symb_item" value="'%BWAUTHUSER-76%'" />
<SYMB_ITEM ID="BS_VOIP_Data.astVoipAccounts[75].aucS_SIP_PASSWORD[0]"
class="symb_item" value="'%BWAUTHPASSWORD-76%'" />
<SYMB_ITEM ID="BS_VOIP_Data.astVoipAccounts[75].aucS_SIP_USER_ID[0]"
class="symb_item" value="'%BWLINPORT-76%'" />
<SYMB_ITEM ID="BS_VOIP_Data.astVoipAccounts[75].ucB_SIP_ACCOUNT_IS_ACTIVE_1"
class="symb_item" value="%BWLIN-BINARY-76%" />
<SYMB_ITEM ID="BS_VOIP_Data.astVoipAccounts[75].ucB_VOIP_NET_AM_ENABLED_1"
class="symb_item" value="0" />

<!--VoIP 77 -->
<SYMB_ITEM ID="BS_VOIP_Data.astVoipAccounts[76].aucS_SIP_DISPLAYNAME[0]"
class="symb_item" value="'%BWNAME-77%'" />
<SYMB_ITEM ID="BS_VOIP_Data.astVoipAccounts[76].aucS_SIP_LOGIN_ID[0]"
class="symb_item" value="'%BWAUTHUSER-77%'" />
<SYMB_ITEM ID="BS_VOIP_Data.astVoipAccounts[76].aucS_SIP_PASSWORD[0]"
class="symb_item" value="'%BWAUTHPASSWORD-77%'" />
<SYMB_ITEM ID="BS_VOIP_Data.astVoipAccounts[76].aucS_SIP_USER_ID[0]"
class="symb_item" value="'%BWLINPORT-77%'" />
<SYMB_ITEM ID="BS_VOIP_Data.astVoipAccounts[76].ucB_SIP_ACCOUNT_IS_ACTIVE_1"
class="symb_item" value="%BWLIN-BINARY-77%" />
<SYMB_ITEM ID="BS_VOIP_Data.astVoipAccounts[76].ucB_VOIP_NET_AM_ENABLED_1"
class="symb_item" value="0" />

<!--VoIP 78 -->
<SYMB_ITEM ID="BS_VOIP_Data.astVoipAccounts[77].aucS_SIP_DISPLAYNAME[0]"
class="symb_item" value="'%BWNAME-78%'" />
<SYMB_ITEM ID="BS_VOIP_Data.astVoipAccounts[77].aucS_SIP_LOGIN_ID[0]"
class="symb_item" value="'%BWAUTHUSER-78%'" />
<SYMB_ITEM ID="BS_VOIP_Data.astVoipAccounts[77].aucS_SIP_PASSWORD[0]"
class="symb_item" value="'%BWAUTHPASSWORD-78%'" />
<SYMB_ITEM ID="BS_VOIP_Data.astVoipAccounts[77].aucS_SIP_USER_ID[0]"
class="symb_item" value="'%BWLINPORT-78%'" />
<SYMB_ITEM ID="BS_VOIP_Data.astVoipAccounts[77].ucB_SIP_ACCOUNT_IS_ACTIVE_1"
class="symb_item" value="%BWLIN-BINARY-78%" />
<SYMB_ITEM ID="BS_VOIP_Data.astVoipAccounts[77].ucB_VOIP_NET_AM_ENABLED_1"
class="symb_item" value="0" />

<!--VoIP 79 -->
<SYMB_ITEM ID="BS_VOIP_Data.astVoipAccounts[78].aucS_SIP_DISPLAYNAME[0]"
class="symb_item" value="'%BWNAME-79%'" />
<SYMB_ITEM ID="BS_VOIP_Data.astVoipAccounts[78].aucS_SIP_LOGIN_ID[0]"
class="symb_item" value="'%BWAUTHUSER-79%'" />
<SYMB_ITEM ID="BS_VOIP_Data.astVoipAccounts[78].aucS_SIP_PASSWORD[0]"
class="symb_item" value="'%BWAUTHPASSWORD-79%'" />
<SYMB_ITEM ID="BS_VOIP_Data.astVoipAccounts[78].aucS_SIP_USER_ID[0]"
class="symb_item" value="'%BWLINPORT-79%'" />
<SYMB_ITEM ID="BS_VOIP_Data.astVoipAccounts[78].ucB_SIP_ACCOUNT_IS_ACTIVE_1"
class="symb_item" value="%BWLIN-BINARY-79%" />
<SYMB_ITEM ID="BS_VOIP_Data.astVoipAccounts[78].ucB_VOIP_NET_AM_ENABLED_1"
class="symb_item" value="0" />

<!--VoIP 80 -->
<SYMB_ITEM ID="BS_VOIP_Data.astVoipAccounts[79].aucS_SIP_DISPLAYNAME[0]"
class="symb_item" value="'%BWNAME-80%'" />

```



```

<SYMB_ITEM ID="BS_VOIP_Data.astVoipAccounts[79].aucS_SIP_LOGIN_ID[0]"
class="symb_item" value="'%BWAUTHUSER-80%'" />
<SYMB_ITEM ID="BS_VOIP_Data.astVoipAccounts[79].aucS_SIP_PASSWORD[0]"
class="symb_item" value="'%BWAUTHPASSWORD-80%'" />
<SYMB_ITEM ID="BS_VOIP_Data.astVoipAccounts[79].aucS_SIP_USER_ID[0]"
class="symb_item" value="'%BWLINPORT-80%'" />
<SYMB_ITEM ID="BS_VOIP_Data.astVoipAccounts[79].ucB_SIP_ACCOUNT_IS_ACTIVE_1"
class="symb_item" value="%BWLIN-BINARY-80%" />
<SYMB_ITEM ID="BS_VOIP_Data.astVoipAccounts[79].ucB_VOIP_NET_AM_ENABLED_1"
class="symb_item" value="0" />

<!--VoIP 81 -->
<SYMB_ITEM ID="BS_VOIP_Data.astVoipAccounts[80].aucS_SIP_DISPLAYNAME[0]"
class="symb_item" value="'%BWNAME-81%'" />
<SYMB_ITEM ID="BS_VOIP_Data.astVoipAccounts[80].aucS_SIP_LOGIN_ID[0]"
class="symb_item" value="'%BWAUTHUSER-81%'" />
<SYMB_ITEM ID="BS_VOIP_Data.astVoipAccounts[80].aucS_SIP_PASSWORD[0]"
class="symb_item" value="'%BWAUTHPASSWORD-81%'" />
<SYMB_ITEM ID="BS_VOIP_Data.astVoipAccounts[80].aucS_SIP_USER_ID[0]"
class="symb_item" value="'%BWLINPORT-81%'" />
<SYMB_ITEM ID="BS_VOIP_Data.astVoipAccounts[80].ucB_SIP_ACCOUNT_IS_ACTIVE_1"
class="symb_item" value="%BWLIN-BINARY-81%" />
<SYMB_ITEM ID="BS_VOIP_Data.astVoipAccounts[80].ucB_VOIP_NET_AM_ENABLED_1"
class="symb_item" value="0" />

<!--VoIP 82 -->
<SYMB_ITEM ID="BS_VOIP_Data.astVoipAccounts[81].aucS_SIP_DISPLAYNAME[0]"
class="symb_item" value="'%BWNAME-82%'" />
<SYMB_ITEM ID="BS_VOIP_Data.astVoipAccounts[81].aucS_SIP_LOGIN_ID[0]"
class="symb_item" value="'%BWAUTHUSER-82%'" />
<SYMB_ITEM ID="BS_VOIP_Data.astVoipAccounts[81].aucS_SIP_PASSWORD[0]"
class="symb_item" value="'%BWAUTHPASSWORD-82%'" />
<SYMB_ITEM ID="BS_VOIP_Data.astVoipAccounts[81].aucS_SIP_USER_ID[0]"
class="symb_item" value="'%BWLINPORT-82%'" />
<SYMB_ITEM ID="BS_VOIP_Data.astVoipAccounts[81].ucB_SIP_ACCOUNT_IS_ACTIVE_1"
class="symb_item" value="%BWLIN-BINARY-82%" />
<SYMB_ITEM ID="BS_VOIP_Data.astVoipAccounts[81].ucB_VOIP_NET_AM_ENABLED_1"
class="symb_item" value="0" />

<!--VoIP 83 -->
<SYMB_ITEM ID="BS_VOIP_Data.astVoipAccounts[82].aucS_SIP_DISPLAYNAME[0]"
class="symb_item" value="'%BWNAME-83%'" />
<SYMB_ITEM ID="BS_VOIP_Data.astVoipAccounts[82].aucS_SIP_LOGIN_ID[0]"
class="symb_item" value="'%BWAUTHUSER-83%'" />
<SYMB_ITEM ID="BS_VOIP_Data.astVoipAccounts[82].aucS_SIP_PASSWORD[0]"
class="symb_item" value="'%BWAUTHPASSWORD-83%'" />
<SYMB_ITEM ID="BS_VOIP_Data.astVoipAccounts[82].aucS_SIP_USER_ID[0]"
class="symb_item" value="'%BWLINPORT-83%'" />
<SYMB_ITEM ID="BS_VOIP_Data.astVoipAccounts[82].ucB_SIP_ACCOUNT_IS_ACTIVE_1"
class="symb_item" value="%BWLIN-BINARY-83%" />
<SYMB_ITEM ID="BS_VOIP_Data.astVoipAccounts[82].ucB_VOIP_NET_AM_ENABLED_1"
class="symb_item" value="0" />

<!--VoIP 84 -->
<SYMB_ITEM ID="BS_VOIP_Data.astVoipAccounts[83].aucS_SIP_DISPLAYNAME[0]"
class="symb_item" value="'%BWNAME-84%'" />
<SYMB_ITEM ID="BS_VOIP_Data.astVoipAccounts[83].aucS_SIP_LOGIN_ID[0]"
class="symb_item" value="'%BWAUTHUSER-84%'" />
<SYMB_ITEM ID="BS_VOIP_Data.astVoipAccounts[83].aucS_SIP_PASSWORD[0]"
class="symb_item" value="'%BWAUTHPASSWORD-84%'" />
<SYMB_ITEM ID="BS_VOIP_Data.astVoipAccounts[83].aucS_SIP_USER_ID[0]"
class="symb_item" value="'%BWLINPORT-84%'" />
<SYMB_ITEM ID="BS_VOIP_Data.astVoipAccounts[83].ucB_SIP_ACCOUNT_IS_ACTIVE_1"
class="symb_item" value="%BWLIN-BINARY-84%" />
<SYMB_ITEM ID="BS_VOIP_Data.astVoipAccounts[83].ucB_VOIP_NET_AM_ENABLED_1"
class="symb_item" value="0" />

<!--VoIP 85 -->
<SYMB_ITEM ID="BS_VOIP_Data.astVoipAccounts[84].aucS_SIP_DISPLAYNAME[0]"
class="symb_item" value="'%BWNAME-85%'" />

```

```
<SYMB_ITEM ID="BS_VOIP_Data.astVoipAccounts[84].aucS_SIP_LOGIN_ID[0]"
class="symb_item" value="%BWAUTHUSER-85%"/>
<SYMB_ITEM ID="BS_VOIP_Data.astVoipAccounts[84].aucS_SIP_PASSWORD[0]"
class="symb_item" value="%BWAUTHPASSWORD-85%"/>
<SYMB_ITEM ID="BS_VOIP_Data.astVoipAccounts[84].aucS_SIP_USER_ID[0]"
class="symb_item" value="%BWLINPORT-85%"/>
<SYMB_ITEM ID="BS_VOIP_Data.astVoipAccounts[84].ucB_SIP_ACCOUNT_IS_ACTIVE_1"
class="symb_item" value="%BWLIN-BINARY-85%"/>
<SYMB_ITEM ID="BS_VOIP_Data.astVoipAccounts[84].ucB_VOIP_NET_AM_ENABLED_1"
class="symb_item" value="0"/>

<!--VoIP 86 -->
<SYMB_ITEM ID="BS_VOIP_Data.astVoipAccounts[85].aucS_SIP_DISPLAYNAME[0]"
class="symb_item" value="%BWNAME-86%"/>
<SYMB_ITEM ID="BS_VOIP_Data.astVoipAccounts[85].aucS_SIP_LOGIN_ID[0]"
class="symb_item" value="%BWAUTHUSER-86%"/>
<SYMB_ITEM ID="BS_VOIP_Data.astVoipAccounts[85].aucS_SIP_PASSWORD[0]"
class="symb_item" value="%BWAUTHPASSWORD-86%"/>
<SYMB_ITEM ID="BS_VOIP_Data.astVoipAccounts[85].aucS_SIP_USER_ID[0]"
class="symb_item" value="%BWLINPORT-86%"/>
<SYMB_ITEM ID="BS_VOIP_Data.astVoipAccounts[85].ucB_SIP_ACCOUNT_IS_ACTIVE_1"
class="symb_item" value="%BWLIN-BINARY-86%"/>
<SYMB_ITEM ID="BS_VOIP_Data.astVoipAccounts[85].ucB_VOIP_NET_AM_ENABLED_1"
class="symb_item" value="0"/>

<!--VoIP 87 -->
<SYMB_ITEM ID="BS_VOIP_Data.astVoipAccounts[86].aucS_SIP_DISPLAYNAME[0]"
class="symb_item" value="%BWNAME-87%"/>
<SYMB_ITEM ID="BS_VOIP_Data.astVoipAccounts[86].aucS_SIP_LOGIN_ID[0]"
class="symb_item" value="%BWAUTHUSER-87%"/>
<SYMB_ITEM ID="BS_VOIP_Data.astVoipAccounts[86].aucS_SIP_PASSWORD[0]"
class="symb_item" value="%BWAUTHPASSWORD-87%"/>
<SYMB_ITEM ID="BS_VOIP_Data.astVoipAccounts[86].aucS_SIP_USER_ID[0]"
class="symb_item" value="%BWLINPORT-87%"/>
<SYMB_ITEM ID="BS_VOIP_Data.astVoipAccounts[86].ucB_SIP_ACCOUNT_IS_ACTIVE_1"
class="symb_item" value="%BWLIN-BINARY-87%"/>
<SYMB_ITEM ID="BS_VOIP_Data.astVoipAccounts[86].ucB_VOIP_NET_AM_ENABLED_1"
class="symb_item" value="0"/>

<!--VoIP 88 -->
<SYMB_ITEM ID="BS_VOIP_Data.astVoipAccounts[87].aucS_SIP_DISPLAYNAME[0]"
class="symb_item" value="%BWNAME-88%"/>
<SYMB_ITEM ID="BS_VOIP_Data.astVoipAccounts[87].aucS_SIP_LOGIN_ID[0]"
class="symb_item" value="%BWAUTHUSER-88%"/>
<SYMB_ITEM ID="BS_VOIP_Data.astVoipAccounts[87].aucS_SIP_PASSWORD[0]"
class="symb_item" value="%BWAUTHPASSWORD-88%"/>
<SYMB_ITEM ID="BS_VOIP_Data.astVoipAccounts[87].aucS_SIP_USER_ID[0]"
class="symb_item" value="%BWLINPORT-88%"/>
<SYMB_ITEM ID="BS_VOIP_Data.astVoipAccounts[87].ucB_SIP_ACCOUNT_IS_ACTIVE_1"
class="symb_item" value="%BWLIN-BINARY-88%"/>
<SYMB_ITEM ID="BS_VOIP_Data.astVoipAccounts[87].ucB_VOIP_NET_AM_ENABLED_1"
class="symb_item" value="0"/>

<!--VoIP 89 -->
<SYMB_ITEM ID="BS_VOIP_Data.astVoipAccounts[88].aucS_SIP_DISPLAYNAME[0]"
class="symb_item" value="%BWNAME-89%"/>
<SYMB_ITEM ID="BS_VOIP_Data.astVoipAccounts[88].aucS_SIP_LOGIN_ID[0]"
class="symb_item" value="%BWAUTHUSER-89%"/>
<SYMB_ITEM ID="BS_VOIP_Data.astVoipAccounts[88].aucS_SIP_PASSWORD[0]"
class="symb_item" value="%BWAUTHPASSWORD-89%"/>
<SYMB_ITEM ID="BS_VOIP_Data.astVoipAccounts[88].aucS_SIP_USER_ID[0]"
class="symb_item" value="%BWLINPORT-89%"/>
<SYMB_ITEM ID="BS_VOIP_Data.astVoipAccounts[88].ucB_SIP_ACCOUNT_IS_ACTIVE_1"
class="symb_item" value="%BWLIN-BINARY-89%"/>
<SYMB_ITEM ID="BS_VOIP_Data.astVoipAccounts[88].ucB_VOIP_NET_AM_ENABLED_1"
class="symb_item" value="0"/>

<!--VoIP 90 -->
<SYMB_ITEM ID="BS_VOIP_Data.astVoipAccounts[89].aucS_SIP_DISPLAYNAME[0]"
class="symb_item" value="%BWNAME-90%"/>
```



```

<SYMB_ITEM ID="BS_VOIP_Data.astVoipAccounts[89].aucS_SIP_LOGIN_ID[0]"
class="symb_item" value="'%BWAUTHUSER-90%'" />
<SYMB_ITEM ID="BS_VOIP_Data.astVoipAccounts[89].aucS_SIP_PASSWORD[0]"
class="symb_item" value="'%BWAUTHPASSWORD-90%'" />
<SYMB_ITEM ID="BS_VOIP_Data.astVoipAccounts[89].aucS_SIP_USER_ID[0]"
class="symb_item" value="'%BWLINPORT-90%'" />
<SYMB_ITEM ID="BS_VOIP_Data.astVoipAccounts[89].ucB_SIP_ACCOUNT_IS_ACTIVE_1"
class="symb_item" value="%BWLIN-BINARY-90%" />
<SYMB_ITEM ID="BS_VOIP_Data.astVoipAccounts[89].ucB_VOIP_NET_AM_ENABLED_1"
class="symb_item" value="0" />

<!--VoIP 91 -->
<SYMB_ITEM ID="BS_VOIP_Data.astVoipAccounts[90].aucS_SIP_DISPLAYNAME[0]"
class="symb_item" value="'%BWNAME-91%'" />
<SYMB_ITEM ID="BS_VOIP_Data.astVoipAccounts[90].aucS_SIP_LOGIN_ID[0]"
class="symb_item" value="'%BWAUTHUSER-91%'" />
<SYMB_ITEM ID="BS_VOIP_Data.astVoipAccounts[90].aucS_SIP_PASSWORD[0]"
class="symb_item" value="'%BWAUTHPASSWORD-91%'" />
<SYMB_ITEM ID="BS_VOIP_Data.astVoipAccounts[90].aucS_SIP_USER_ID[0]"
class="symb_item" value="'%BWLINPORT-91%'" />
<SYMB_ITEM ID="BS_VOIP_Data.astVoipAccounts[90].ucB_SIP_ACCOUNT_IS_ACTIVE_1"
class="symb_item" value="%BWLIN-BINARY-91%" />
<SYMB_ITEM ID="BS_VOIP_Data.astVoipAccounts[90].ucB_VOIP_NET_AM_ENABLED_1"
class="symb_item" value="0" />

<!--VoIP 92 -->
<SYMB_ITEM ID="BS_VOIP_Data.astVoipAccounts[91].aucS_SIP_DISPLAYNAME[0]"
class="symb_item" value="'%BWNAME-92%'" />
<SYMB_ITEM ID="BS_VOIP_Data.astVoipAccounts[91].aucS_SIP_LOGIN_ID[0]"
class="symb_item" value="'%BWAUTHUSER-92%'" />
<SYMB_ITEM ID="BS_VOIP_Data.astVoipAccounts[91].aucS_SIP_PASSWORD[0]"
class="symb_item" value="'%BWAUTHPASSWORD-92%'" />
<SYMB_ITEM ID="BS_VOIP_Data.astVoipAccounts[91].aucS_SIP_USER_ID[0]"
class="symb_item" value="'%BWLINPORT-92%'" />
<SYMB_ITEM ID="BS_VOIP_Data.astVoipAccounts[91].ucB_SIP_ACCOUNT_IS_ACTIVE_1"
class="symb_item" value="%BWLIN-BINARY-92%" />
<SYMB_ITEM ID="BS_VOIP_Data.astVoipAccounts[91].ucB_VOIP_NET_AM_ENABLED_1"
class="symb_item" value="0" />

<!--VoIP 93 -->
<SYMB_ITEM ID="BS_VOIP_Data.astVoipAccounts[92].aucS_SIP_DISPLAYNAME[0]"
class="symb_item" value="'%BWNAME-93%'" />
<SYMB_ITEM ID="BS_VOIP_Data.astVoipAccounts[92].aucS_SIP_LOGIN_ID[0]"
class="symb_item" value="'%BWAUTHUSER-93%'" />
<SYMB_ITEM ID="BS_VOIP_Data.astVoipAccounts[92].aucS_SIP_PASSWORD[0]"
class="symb_item" value="'%BWAUTHPASSWORD-93%'" />
<SYMB_ITEM ID="BS_VOIP_Data.astVoipAccounts[92].aucS_SIP_USER_ID[0]"
class="symb_item" value="'%BWLINPORT-93%'" />
<SYMB_ITEM ID="BS_VOIP_Data.astVoipAccounts[92].ucB_SIP_ACCOUNT_IS_ACTIVE_1"
class="symb_item" value="%BWLIN-BINARY-93%" />
<SYMB_ITEM ID="BS_VOIP_Data.astVoipAccounts[92].ucB_VOIP_NET_AM_ENABLED_1"
class="symb_item" value="0" />

<!--VoIP 94 -->
<SYMB_ITEM ID="BS_VOIP_Data.astVoipAccounts[93].aucS_SIP_DISPLAYNAME[0]"
class="symb_item" value="'%BWNAME-94%'" />
<SYMB_ITEM ID="BS_VOIP_Data.astVoipAccounts[93].aucS_SIP_LOGIN_ID[0]"
class="symb_item" value="'%BWAUTHUSER-94%'" />
<SYMB_ITEM ID="BS_VOIP_Data.astVoipAccounts[93].aucS_SIP_PASSWORD[0]"
class="symb_item" value="'%BWAUTHPASSWORD-94%'" />
<SYMB_ITEM ID="BS_VOIP_Data.astVoipAccounts[93].aucS_SIP_USER_ID[0]"
class="symb_item" value="'%BWLINPORT-94%'" />
<SYMB_ITEM ID="BS_VOIP_Data.astVoipAccounts[93].ucB_SIP_ACCOUNT_IS_ACTIVE_1"
class="symb_item" value="%BWLIN-BINARY-94%" />
<SYMB_ITEM ID="BS_VOIP_Data.astVoipAccounts[93].ucB_VOIP_NET_AM_ENABLED_1"
class="symb_item" value="0" />

<!--VoIP 95 -->
<SYMB_ITEM ID="BS_VOIP_Data.astVoipAccounts[94].aucS_SIP_DISPLAYNAME[0]"
class="symb_item" value="'%BWNAME-95%'" />

```

```

<SYMB_ITEM ID="BS_VOIP_Data.astVoipAccounts[94].aucS_SIP_LOGIN_ID[0]"
class="symb_item" value="'%BWAUTHUSER-95%'" />
<SYMB_ITEM ID="BS_VOIP_Data.astVoipAccounts[94].aucS_SIP_PASSWORD[0]"
class="symb_item" value="'%BWAUTHPASSWORD-95%'" />
<SYMB_ITEM ID="BS_VOIP_Data.astVoipAccounts[94].aucS_SIP_USER_ID[0]"
class="symb_item" value="'%BWLINPORT-95%'" />
<SYMB_ITEM ID="BS_VOIP_Data.astVoipAccounts[94].ucB_SIP_ACCOUNT_IS_ACTIVE_1"
class="symb_item" value="%BWLIN-BINARY-95%" />
<SYMB_ITEM ID="BS_VOIP_Data.astVoipAccounts[94].ucB_VOIP_NET_AM_ENABLED_1"
class="symb_item" value="0" />

<!--VoIP 96 -->
<SYMB_ITEM ID="BS_VOIP_Data.astVoipAccounts[95].aucS_SIP_DISPLAYNAME[0]"
class="symb_item" value="'%BWNAME-96%'" />
<SYMB_ITEM ID="BS_VOIP_Data.astVoipAccounts[95].aucS_SIP_LOGIN_ID[0]"
class="symb_item" value="'%BWAUTHUSER-96%'" />
<SYMB_ITEM ID="BS_VOIP_Data.astVoipAccounts[95].aucS_SIP_PASSWORD[0]"
class="symb_item" value="'%BWAUTHPASSWORD-96%'" />
<SYMB_ITEM ID="BS_VOIP_Data.astVoipAccounts[95].aucS_SIP_USER_ID[0]"
class="symb_item" value="'%BWLINPORT-96%'" />
<SYMB_ITEM ID="BS_VOIP_Data.astVoipAccounts[95].ucB_SIP_ACCOUNT_IS_ACTIVE_1"
class="symb_item" value="%BWLIN-BINARY-96%" />
<SYMB_ITEM ID="BS_VOIP_Data.astVoipAccounts[95].ucB_VOIP_NET_AM_ENABLED_1"
class="symb_item" value="0" />

<!--VoIP 97 -->
<SYMB_ITEM ID="BS_VOIP_Data.astVoipAccounts[96].aucS_SIP_DISPLAYNAME[0]"
class="symb_item" value="'%BWNAME-97%'" />
<SYMB_ITEM ID="BS_VOIP_Data.astVoipAccounts[96].aucS_SIP_LOGIN_ID[0]"
class="symb_item" value="'%BWAUTHUSER-97%'" />
<SYMB_ITEM ID="BS_VOIP_Data.astVoipAccounts[96].aucS_SIP_PASSWORD[0]"
class="symb_item" value="'%BWAUTHPASSWORD-97%'" />
<SYMB_ITEM ID="BS_VOIP_Data.astVoipAccounts[96].aucS_SIP_USER_ID[0]"
class="symb_item" value="'%BWLINPORT-97%'" />
<SYMB_ITEM ID="BS_VOIP_Data.astVoipAccounts[96].ucB_SIP_ACCOUNT_IS_ACTIVE_1"
class="symb_item" value="%BWLIN-BINARY-97%" />
<SYMB_ITEM ID="BS_VOIP_Data.astVoipAccounts[96].ucB_VOIP_NET_AM_ENABLED_1"
class="symb_item" value="0" />

<!--VoIP 98 -->
<SYMB_ITEM ID="BS_VOIP_Data.astVoipAccounts[97].aucS_SIP_DISPLAYNAME[0]"
class="symb_item" value="'%BWNAME-98%'" />
<SYMB_ITEM ID="BS_VOIP_Data.astVoipAccounts[97].aucS_SIP_LOGIN_ID[0]"
class="symb_item" value="'%BWAUTHUSER-98%'" />
<SYMB_ITEM ID="BS_VOIP_Data.astVoipAccounts[97].aucS_SIP_PASSWORD[0]"
class="symb_item" value="'%BWAUTHPASSWORD-98%'" />
<SYMB_ITEM ID="BS_VOIP_Data.astVoipAccounts[97].aucS_SIP_USER_ID[0]"
class="symb_item" value="'%BWLINPORT-98%'" />
<SYMB_ITEM ID="BS_VOIP_Data.astVoipAccounts[97].ucB_SIP_ACCOUNT_IS_ACTIVE_1"
class="symb_item" value="%BWLIN-BINARY-98%" />
<SYMB_ITEM ID="BS_VOIP_Data.astVoipAccounts[97].ucB_VOIP_NET_AM_ENABLED_1"
class="symb_item" value="0" />

<!--VoIP 99 -->
<SYMB_ITEM ID="BS_VOIP_Data.astVoipAccounts[98].aucS_SIP_DISPLAYNAME[0]"
class="symb_item" value="'%BWNAME-99%'" />
<SYMB_ITEM ID="BS_VOIP_Data.astVoipAccounts[98].aucS_SIP_LOGIN_ID[0]"
class="symb_item" value="'%BWAUTHUSER-99%'" />
<SYMB_ITEM ID="BS_VOIP_Data.astVoipAccounts[98].aucS_SIP_PASSWORD[0]"
class="symb_item" value="'%BWAUTHPASSWORD-99%'" />
<SYMB_ITEM ID="BS_VOIP_Data.astVoipAccounts[98].aucS_SIP_USER_ID[0]"
class="symb_item" value="'%BWLINPORT-99%'" />
<SYMB_ITEM ID="BS_VOIP_Data.astVoipAccounts[98].ucB_SIP_ACCOUNT_IS_ACTIVE_1"
class="symb_item" value="%BWLIN-BINARY-99%" />
<SYMB_ITEM ID="BS_VOIP_Data.astVoipAccounts[98].ucB_VOIP_NET_AM_ENABLED_1"
class="symb_item" value="0" />

<!--VoIP 100 -->
<SYMB_ITEM ID="BS_VOIP_Data.astVoipAccounts[99].aucS_SIP_DISPLAYNAME[0]"
class="symb_item" value="'%BWNAME-100%'" />

```

```
<SYMB_ITEM ID="BS_VOIP_Data.astVoipAccounts[99].aucS_SIP_LOGIN_ID[0]"
class="symb_item" value="%BWAUTHUSER-100%"/>
<SYMB_ITEM ID="BS_VOIP_Data.astVoipAccounts[99].aucS_SIP_PASSWORD[0]"
class="symb_item" value="%BWAUTHPASSWORD-100%"/>
<SYMB_ITEM ID="BS_VOIP_Data.astVoipAccounts[99].aucS_SIP_USER_ID[0]"
class="symb_item" value="%BWLINEPORT-100%"/>
<SYMB_ITEM ID="BS_VOIP_Data.astVoipAccounts[99].ucB_SIP_ACCOUNT_IS_ACTIVE_1"
class="symb_item" value="%BWLINE-BINARY-100%"/>
<SYMB_ITEM ID="BS_VOIP_Data.astVoipAccounts[99].ucB_VOIP_NET_AM_ENABLED_1"
class="symb_item" value="0"/>

</Provider>
</ProviderFrame>
```

References

- [1] Gigaset Communications GmbH. 2011. *Gigaset N720 DECT IP PRO Installation Guide*. Available from Gigaset Communications at wiki.gigasetpro.com
- [2] BroadSoft, Inc. 2017. *BroadWorks Device Management Configuration Guide, Release 22.0*. Available from BroadSoft at xchange.broadsoft.com.
- [3] BroadSoft, Inc. 2016. *BroadWorks Redundancy Guide, Release 22.0*. Available from BroadSoft at xchange.broadsoft.com.
- [4] BroadSoft, Inc. 2016. *BroadWorks SIP Access Interface Interworking Guide, Release 22.0*. Available from BroadSoft at xchange.broadsoft.com.
- [5] BroadSoft, Inc. 2016. *BroadWorks SIP Phone Interoperability Test Plan, Release 22.0*. Available from BroadSoft at xchange.broadsoft.com.
- [6] BroadSoft, Inc. 2017. *BroadWorks SIP Phone Functional Test Plan, Release 22.0*. Available from BroadSoft at xchange.broadsoft.com.
- [7] BroadSoft, Inc. 2017. *BroadWorks Device Management Interoperability Test Plan, Release 22.0*. Available from BroadSoft at xchange.broadsoft.com.
- [8] BroadSoft, Inc. 2016. *BroadWorks CPE Kit Usage Guide, Release 22.0*. Available from BroadSoft at xchange.broadsoft.com.
- [9] Gigaset Communications GmbH. 2011. *N720-BroadSoft configuration files.zip (consisting of: N720.xml and N720.cfg)*. Available from Gigaset Communications at <http://gigaset.com/certifications>.
- [10] Gigaset Communications GmbH. 2011. *Gigaset IP and IP-PRO Phones Provisioning/Remote Management and Parameter-list working general*. Available from Gigaset Communications at <https://teamwork.gigaset.com/gigawiki/display/GPPPO/N720+XML+provisioning+parameters>.