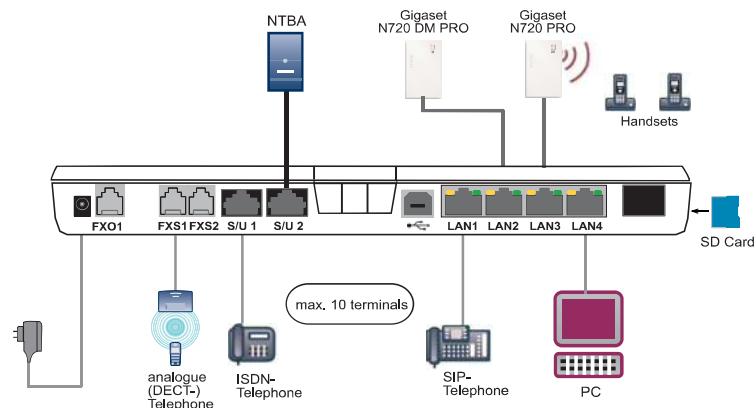


# hybird 120 Gigaset Edition Installation



## System requirements

For the configuration of the device, the following system requirements must be met:

- Microsoft Windows operating system Windows 2000 or higher; Windows XP SP3 requires the following hotfix: <http://support.microsoft.com/kb/953761>
- Internet Explorer Version 7 or 9 or higher (security settings may need to be customised), Mozilla Firefox Version 4 or higher
- Installed network card (Ethernet)
- Installed TCP/IP protocol
- PC configured to automatically obtain IP address and DNS server
- High colour display (more than 256 colours) to show graphics accurately

## LEDs

| Power  | Status | SD Card | DSL    | SIP    | ISDN1  | ISDN2  |
|--------|--------|---------|--------|--------|--------|--------|
| Yellow | Yellow | Yellow  | Yellow | Yellow | Yellow | Yellow |

| LED     | Colour | Status        | Information                               |
|---------|--------|---------------|---|
| Power   | Yellow | on            | The power supply is connected             |
|         |        | off           | No power supply                           |
| Status  | Yellow | on            | After switching on: Device is started     |
|         |        | slow flashing | During operation: Fault                   |
| SD card |        | on            | The device is active                      |
|         |        | off           | SD card inserted, no read/write access    |
|         |        | flickering    | No SD card inserted                       |
|         |        | flickering    | Read/write access                         |
| DSL     | Yellow | off           | Not supported                             |
|         |        | slow flashing | Not supported                             |
|         |        | on            | Nor supported                             |
|         |        | flickering    | Nor supported                             |
| SIP     | Yellow | on            | Registered successfully with SIP provider |
|         |        | off           | No SIP registration                       |
| ISDN1   | Yellow | on            | Layer 1 activated                         |
|         |        | off           | On standby or not functioning             |
| ISDN 2  | Yellow | on            | Layer 1 activated                         |
|         |        | off           | On standby or not functioning             |

## Safety notices

- Caution: Any area that can only be opened using a tool is classed as an area of risk.
- The ventilation openings must be kept uncovered. The device should not be exposed to direct sunlight or any other source of heat.
- The equipment should be installed upright on a wall.
- When connecting any telecommunications network (TNV circuit), take care to avoid electrical shock.
- The device and the internal connections should only be assembled and installed inside a building!
- The device may only be operated using the approved power supply unit that comes supplied.
- Ensure that only CE-certified terminals are connected to the device.
- It will not be possible to access the device via the external ISDN during a power failure.
- No liquids should be allowed to get inside the device or the power supply unit.
- Before releasing the device for repair, you should save all data, then reset the telephone unit to its ex works state.

## Scope of supply

- hybrid 120 Gigaset Edition
- Power supply unit
- Ethernet cable (yellow)
- ISDN BRI cable (black)
- SD card with voicemail data
- Installation Instructions
- Safety notices



## Available connections for terminals

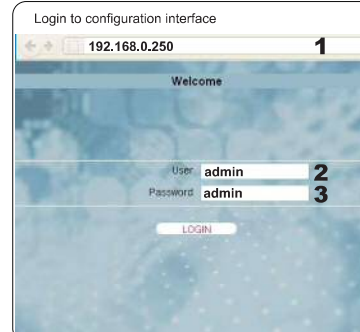
- 2 x analogue terminal (RJ12 sockets, extendible via terminal block)
- 1 x ISDN (second connection adjustable through configuration from internal to external)
- 3 x SIP (4 x without PC, extendible through switch)
- A maximum of ten terminals can be directly connected.

Use the cables supplied with the terminals to connect the terminals. Terminals can either be connected using the sockets on the bottom of the device, or using the connected adapters beneath the detachable faceplate.

## Setting up with a PC

You should comply with the requirements for doing the configuration with the web interface. These are described in manual. In its ex works state, your hybrid 120 is set up as a DHCP server. Therefore you need to make all the settings required for a connection on the PCs in your LAN that have no IP configuration. The PC you intend to use to perform the basic configuration must be set up to automatically obtain an IP configuration.

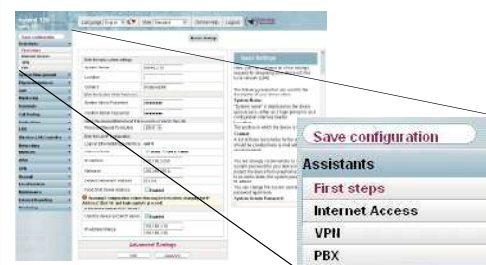
- 1 In the browser's address line, enter IP address **192.168.0.250** and log in with the following information:  
**User:** admin  
**Password:** admin  
You will be prompted to change the administrator password.



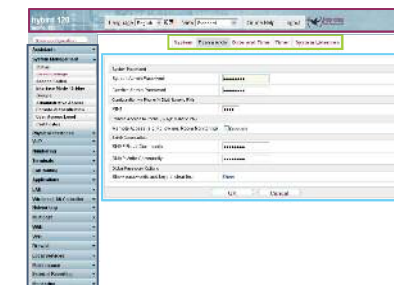
- 2 In the web interface you can make other settings, e. g. for telephony. The manual provides information on connecting and starting up your SIP telephone. As an option, you may enter SIP providers for external telephone connections. For this, observe the online help description in the **VoIP** → **Settings** → **SIP provider** → **New menu**. You can assign an internal number to your SIP telephone in the **Terminals** → **Other phones** → **VoIP** menu. Integrated online help provides detailed information on individual configuration options.

- 3 For advanced configurations, we recommend that you refer to our wiki at [wiki.gigasetpro.com](http://wiki.gigasetpro.com). You can also enable service access via the ISDN login in the **System Management** → **Administrative Access** menu. Here, enable the **Service Login (ISDN web access)** control box. Confirm with **OK**. Alternatively, you can initiate the service connection by entering the key sequence \*96. Then complete your entry with #.

## Basic configuration



## Configuration interface



### Header

**Language:** Select the language for the configuration interface.  
**View:** Select whether you want to use the default configuration interface or the built-in SNMP browser for configuration purposes.  
**Online Help:** Call the help function by clicking the button.  
**Logout:** Click this button to log out of the configuration interface.  
**Navigation bar**  
The various settings are sorted into groups in the navigation bar. Click on an entry in order to open the corresponding submenu. If you click on a submenu, the available settings parameters will then be displayed to you in the main configuration window.  
**Main configuration window**  
You can then switch back and forth between individual settings pages using the control elements in the top part ( ) of the main configuration window. Use the bottom part ( ) of the main configuration window in order to configure your device.

## Connect devices and cables

**hybird 120:** Install the device in a suitable location (for assembly information, refer to the online guide at [wiki.gigasetpro.com](http://wiki.gigasetpro.com)) and connect to the mains using the power unit supplied.

**ISDN:** Use the black ISDN cable to connect your service operator's NTBA to the "S/U 2" slot of the hybrid 120.

**ISDN terminal:** Connect an ISDN terminal to the internal ISDN connector of the hybrid 120. The "S/U 1" ISDN socket is preconfigured for operating internal ISDN devices with an S0 connection.

**Analogue terminals:** Connect your analogue terminals to analogue connectors FXS1, FXS2 of the hybrid 120.

**SIP telephones:** Connect your SIP telephones to the 10/100/1000 Base-T Ethernet interfaces. You need to perform one last step on the PC. For information about this, refer to the guide provided in our wiki at [wiki.gigasetpro.com](http://wiki.gigasetpro.com).

**PC:** Use an Ethernet cable to connect a suitable PC to one of the Ethernet interfaces on the hybrid 120. Should you encounter any problem with the connection between the PC and the hybrid 120, please read the relevant chapter in the manual.

**VoIP:** For a purely IP connection without ISDN, use a dedicated cable and the quick installation guide furnished by the provider.

## Contact

Questions? For rapid assistance, please visit [www.gigasetpro.com](http://www.gigasetpro.com). The trade outlet where you bought your telephone system will be happy to help you with further questions relating to our Gigaset Professional telephone system.

If you have any questions when using your telephone system, please visit [wiki.gigasetpro.com](http://wiki.gigasetpro.com).