

# Firmware N720 IP PRO

## Firmware update Gigaset N720 IP

Out of the Box, the DECT manager does not know about the preferred base station software version and allows the start-up of the Base station with any software version.

**Status Page ->**  
 Preferred Base station software == \*\* 333 \*\* \*\*\*\* \*\*  
 Current firmware version of DECT Manager: 70.073.00.030.02  
 To guarantee the up to date and compatible DECT manager and Base station software you need:  
 • Internet Access to Firmware update Packages at profile.gigaset.net  
 • Or the software package on a local http server  
 Preferred firmware version of DECT Manager: \*\*.073.\*\*.\*\*\*.\*\*

**Check software version DECT Manager and Base station**

The Software version of the DECT manager and the Base station should always be the same.

| station           | Module | Current version  | Operating days | Download status |
|-------------------|--------|------------------|----------------|-----------------|
| 1 - Drucker       | 1      | 71.073.00.000.00 | 289            | OK              |
|                   | 2      | 71.073.00.000.00 | 289            | OK              |
| 2 - Eingang       | 1      | 71.073.00.000.00 | 289            | OK              |
|                   | 2      | 71.073.00.000.00 | 289            | OK              |
| 3 - Warteschleife | 1      | 71.073.00.000.00 | 289            | OK              |
|                   | 2      | 71.073.00.000.00 | 289            | OK              |
| 5 - Serverraum    | 1      | 71.073.00.000.00 | 288            | OK              |

What happens if the Software version is different:  
 • It is possible the Base station does not start-up  
 • **Status Page ->**  
 • Download Status == Failed  
 • System can be unstable

**Automatic firmware update is not working**

If the automatic firmware update is not working, you have the following possibilities.

### Behind the Gigaset T500/300 using special module

A special module is made that download the files automatically from our Gigaset server and places the new files on the PBX, click here.

#### Behind the Gigaset T500/T300 update files on PBX

1. Download the files from our wiki.
2. Connect to the PBX using SSH
  - a. Go to the directory:  

```
[root@localhost ~]# cd /var/firmware/gigaset/original
```

| Directory | sub-directory |                                          | Description                 |
|-----------|---------------|------------------------------------------|-----------------------------|
| 70        | 1             | Copy new Baselines.bin and Firmware file | Firmware files DECT manager |
| 71        | 1             | Copy new Baselines.bin and Firmware file | Firmware files DECT base    |

3. N720 should now be able to see the new baseline 73

#### Behind the Gigaset T300/T500 using gigaset.net server

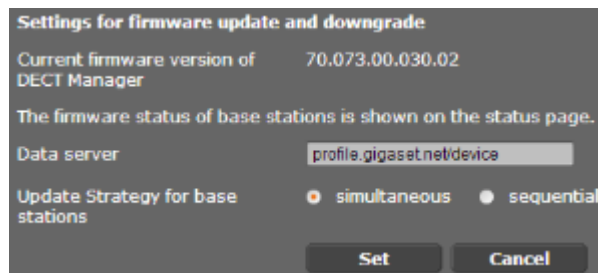
Because of auto provisioning, the Gigaset T300/T500 will change the Data Server field to his own IP address, the Firmware files could not be available on the T300/T500. You have to follow the following procedure.

##### T300/T500

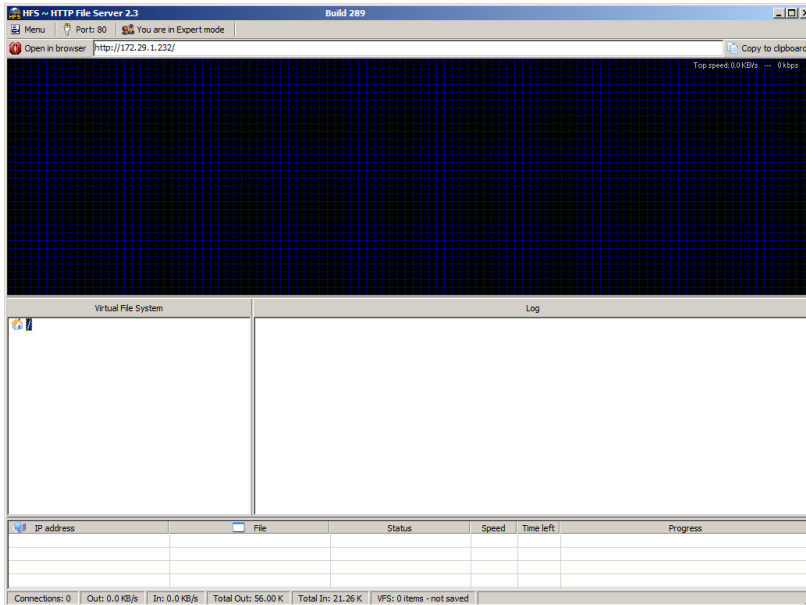
1. Disable the Auto provisioning: Configuration - Phones - Settings - Deactivate auto provisioning.
2. Press Apply to Deactivate

##### N720

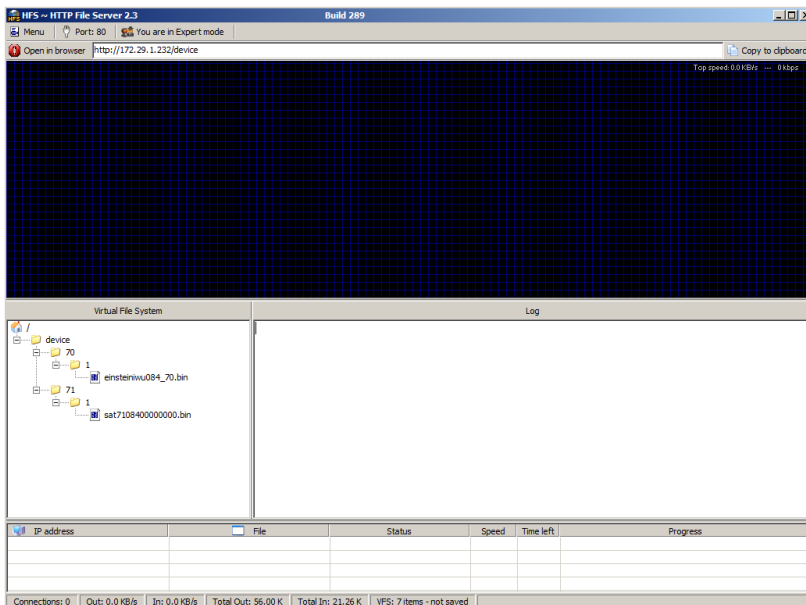
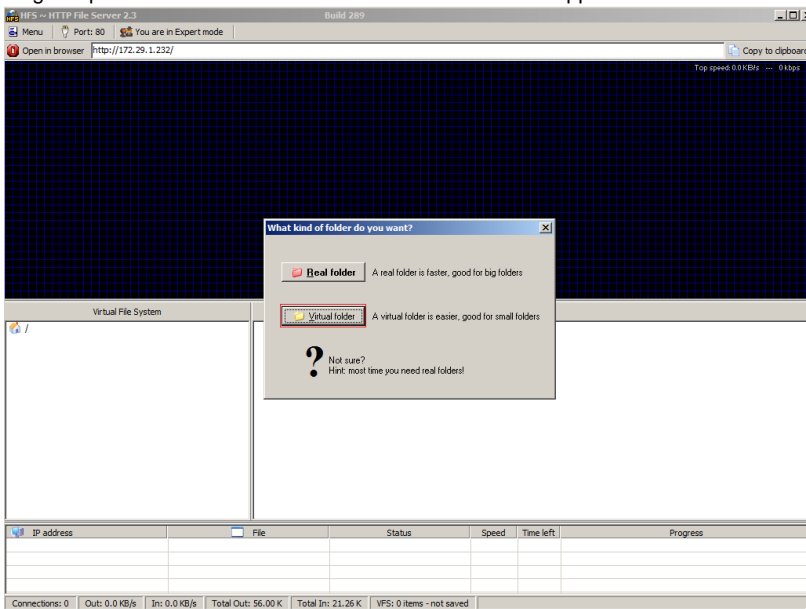
1. Change Data server URL:  
 Settings - Management - Firmware update - Data server to : **profile.gigaset.net/device**
2. Press **Set** to activate the new URL.







- In this example server runs with IP: 172.29.1.232
3. Drag&drop folder structure with the firmware files into HFS application.

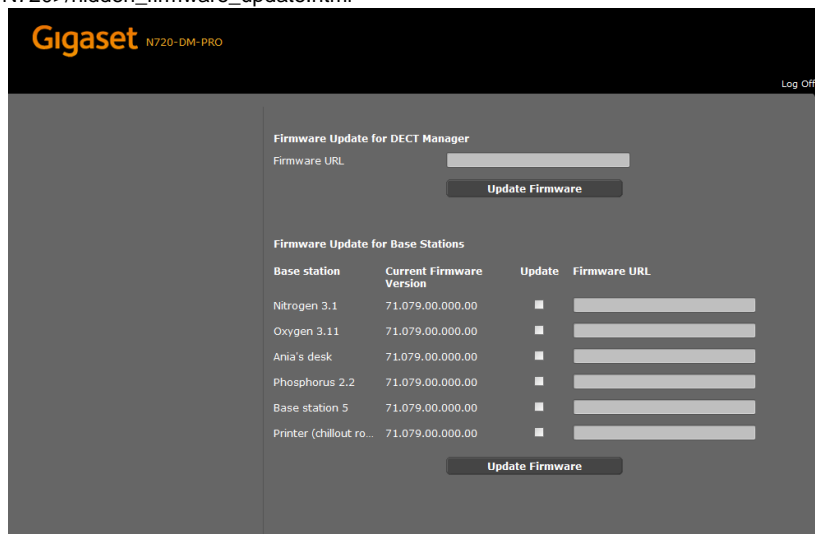


In this example:

Path to DECT Manager firmware: [http://172.29.1.232/device/70/1/einsteiniwu084\\_70.bin](http://172.29.1.232/device/70/1/einsteiniwu084_70.bin)

Path to Base station firmware: <http://172.29.1.232/device/71/1/sat7108400000000000.bin>

4. Login the WebGUI of the N720, then change the URL to: [http://<IP address of N720>/hidden\\_firmware\\_update.html](http://<IP address of N720>/hidden_firmware_update.html)



5. Copy firmware paths for DECT Manager & Base station (3) to the WebUI.

### Download state is NOK

In case the download state shows "NOK" (see status page), i.e. after adding of new base station in the environment, the update job has been started again.

Settings --> Management --> Firmware Update)

- Firmware update Gigaset N720 IP
- Check software version DECT Manager and Base station
- Automatic firmware update is not working
- Download state is NOK

Software version 113

Download

Software version 112

Download

Software version 111

---

Download

---

Software version 110

Download

---