

FAQ Hybrid 120 Wireshark tracing

Tools

Download and install [DIME Manager](#)

Download and install [Wireshark](#).

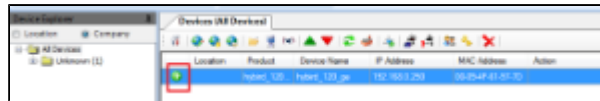
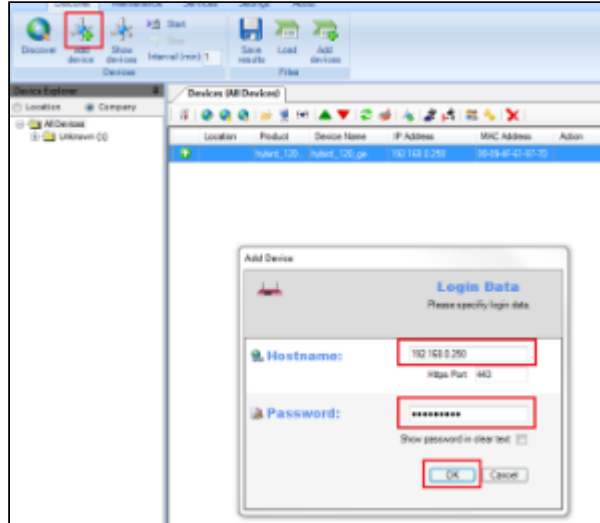
Start DIME Manager

Hybird 120 should be automatically found.

If not use "Add device" to add Hybrid.

- Add device
- enter Hostname
- enter Password
- OK

If the Hybrid 120 is detected you can see a green arrow.

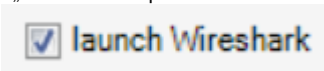


Start Wireshark trace

Click trace interfaces

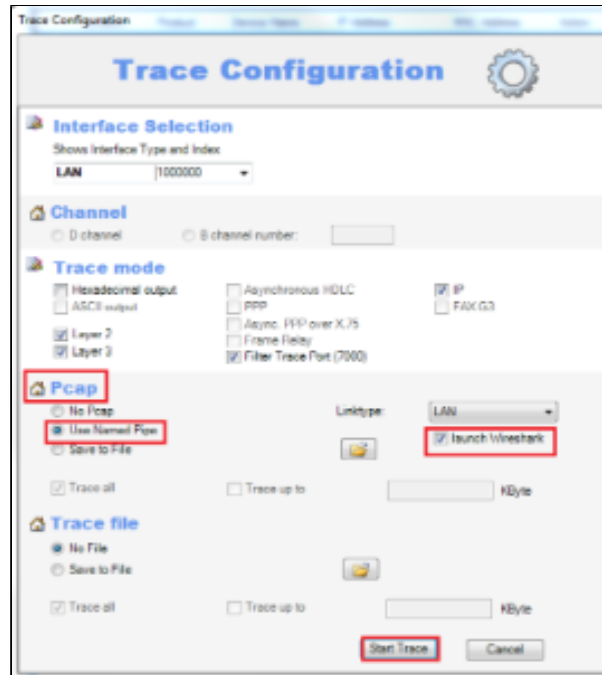


- Pcap set on „Use Named Pipe“



- enable
- click start trace

Trace stop in Wireshark.



Trace stop in DIME Manager.

- Tools
- Start DIME Manager
- Start Wireshark trace

