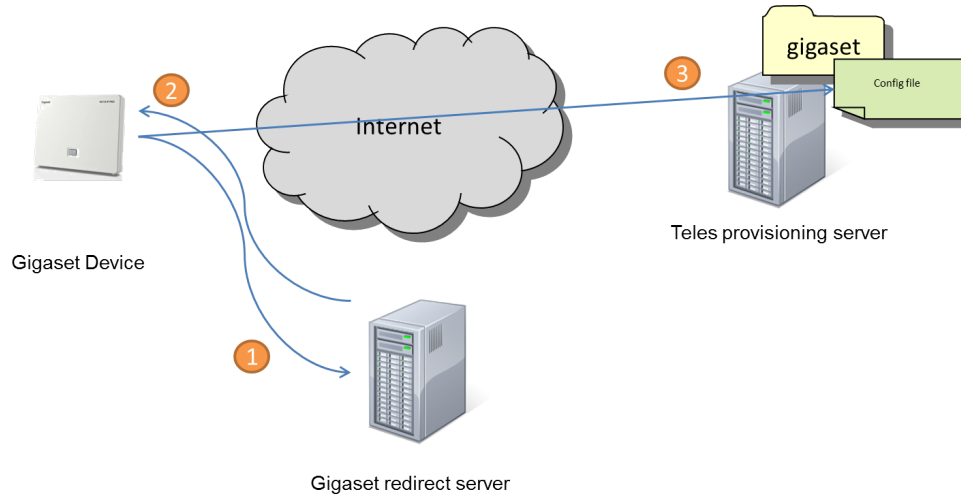


# Teles autoprovisioning

## Introduction

Gigaset-Teles certified devices can be configured automatically by the Teles auto-provisioning server. Below you can find a description how to configure the Gigaset devices and the Teles management platform to realize a zero touch configuration.

## Architecture Overview



1. Gigaset device will connect to Gigaset redirect server
2. Gigaset redirect server will provide URL to Teles provisioning server
3. Gigaset device will download configuration file

Login account for Gigaset redirect server can be obtained through your local technical sales.

## Software versions

The following software versions were used during the testing by Gigaset pro

Device	Software version
Gigaset N510 IP PRO & N300	42.076
Gigaset N720 IP PRO	68

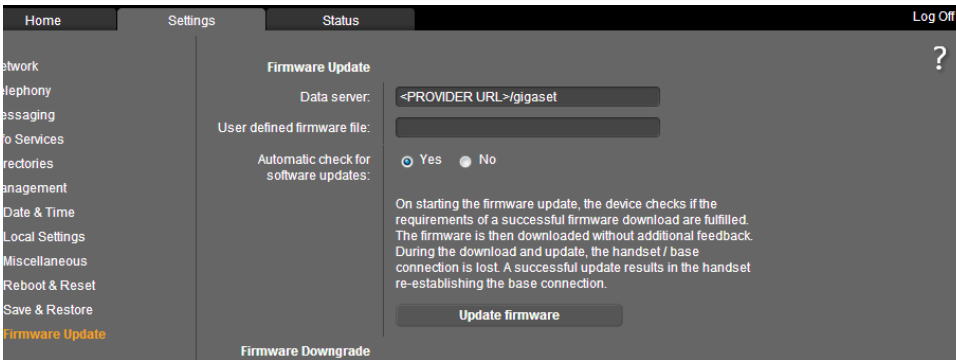
## Redirect to Teles platform

There are 3 possibilities that a device can connect to the Teles platform.

1. Manual configuration of URL
2. Usage of Gigaset redirect server
3. [Enter URL using DHCP option](#)

Item 3 is not part of this document.

## Manual configuration of Redirect URL



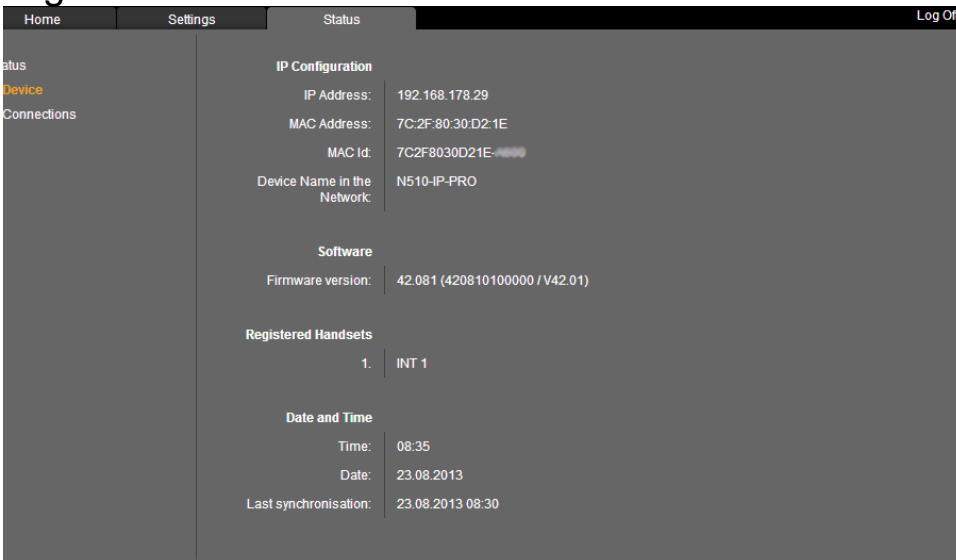
In the Gigaset device go to **Settings - Management - Firmware Update**

The field **Data server** you have to change from "profile.gigaset.net.device" to the URL provided by Teles.

*For security reasons, the real URL is not visible in the picture.*

When you reboot the device, the device will download the configuration file.

## Gigaset redirect server



if you have a login for the Gigaset redirect server, you can automatically let the device connect to the Teles provisioning server without any interaction of the

First you need to know the MAC address and the ID of the device, this can be found on the packaging and in the web-interface of the device.

In the Gigaset device go to **Status - Device**, the field **MAC-Id** contains the MAC address and ID.

Login to the Gigaset redirect server and enter the data for your device.

**no baremans. If you want to back to provtool click [here](#).** Logout

Register      List Devices/Deregister      Upload

Register a single redirection data set to the Gigaset redirection database. MAC-ID, provisioning url and the provider's name are required!

---

MAC-ID:

URL:

Provider:

**Registering succeeded**

MAC password for this device is : A600A4F7AF2F. You can use the MAC and MAC password to authorize device on your server.

MAC-ID:  
Some devices have no MAC-ID. In this case please enter the MAC address.

URL:  
The URL string can contain only fixed text (used for the query as it is) or additional following format specifiers (with a leading %) which will be replaced by the phone:

- %DVID Device ID, composed by build variant and provisioning ID. Example: 42/3
- %MACC MAC address with colons. Example: .00:01:E3:12:34:56.
- %MACD MAC address without colons. Example: .0001E3123456.
- %% To represent the percent character.

**MAC-ID:** The MAC address of the device with the ID, see the above picture where to find in the Device configuration.

**URL:** The URL to the Teles platform. `http://<PROVIDER URL>/gigaset/%MACD.xml`

**Provider:** Give it a name you like.

## Configuration Teles Platform

**Overview** ⌵

General

Services

Clients

Registrations

Licenses

**Configuration** ⌵

Announcements

IP address filter

Feature codes

Call barring

**Subscribers** ⌵

List subscribers

Import

Feature matrix

**Groups** ⌵

Features

Routing

Locations

Rooms

**Services** ⌵

Dedicated conferences

VR assistants

MobileLink

**Clients** ⌵

Software loads

Configuration

**ADs**

Device type	
Manufacturer	<input type="text" value="Gigaset"/>
Series	<input type="text" value="lad-single-dect"/>
Type	<input type="text" value="N510"/>
Firmware	<input type="text" value="42.076"/>
Location	<input type="text" value="None"/>
MAC address	<input style="background-color: #ffe0e0;" type="text"/>
Firmware can be overwritten	<input type="text" value="Yes"/>

On the Teles Platform go to: **Clients - IAD's** and add your Gigaset device, select the Firmware you would like to use and the MAC address of your Gigaset device, this is the MAC address without ID.

Add users to the device.

The screenshot shows the configuration interface for a Gigaset device. The left sidebar contains navigation options: overview, call, use, e, functions, res, configuration, placements, press filter, re codes, settings, subscribers, subscribers, re matrix, steps, res, to, one, e, profiles, used conferences, assistants, links, lists, are loads, duration.

**Device type**

Manufacturer	Gigaset
Series	Iad-single-dock
Type	NE50
Firmware	42.07f
MAC address	7C2F830021E
Firmware can be overwritten	Yes
Settings overview	
Settings merged	
Generated setting file	

**Filter**

Filter string	
Only add settings	No
Show favorites	Yes

**Device action**

None	
------	--

OK

Port	Last Name	First Name	Number	
1	203f	203f	203	<input type="checkbox"/>
2	202f	202f	202	<input type="checkbox"/>
3	201f	201f	201	<input type="checkbox"/>
4	No subscriber selected.			<input type="checkbox"/>
5	No subscriber selected.			<input type="checkbox"/>
6	No subscriber selected.			<input type="checkbox"/>
7	No subscriber selected.			<input type="checkbox"/>
8	No subscriber selected.			<input type="checkbox"/>

The next step is to add the users to the device.

You are now ready to use Auto-provisioning. This device will connect automatically to the Teles platform and the correct settings will be downloaded.

The advantage of using the Gigaset redirect server is that also after a factory-reset of the device, the configuration will be downloaded automatically, using the manual configuration the URL needs to be entered manual.

- [Introduction](#)
- [Architecture Overview](#)
- [Software versions](#)
- [Redirect to Teles platform](#)
- [Manual configuration of Redirect URL](#)
- [Gigaset redirect server](#)
- [Configuration Teles Platform](#)