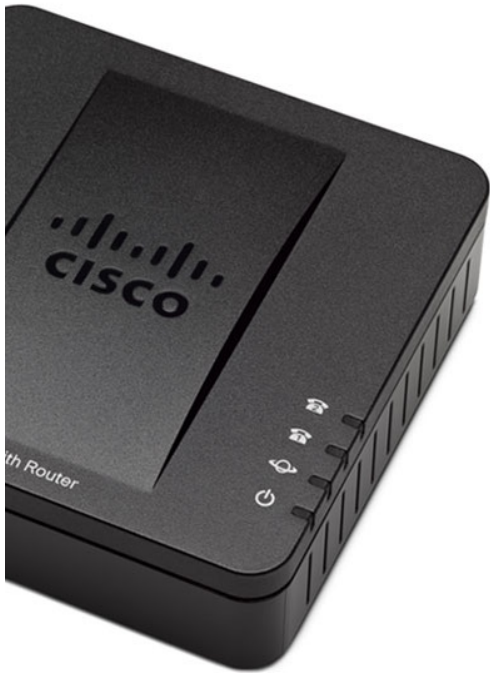


T300/T500 - Cisco SPA112 - 2-Port Phone Adapter - How To



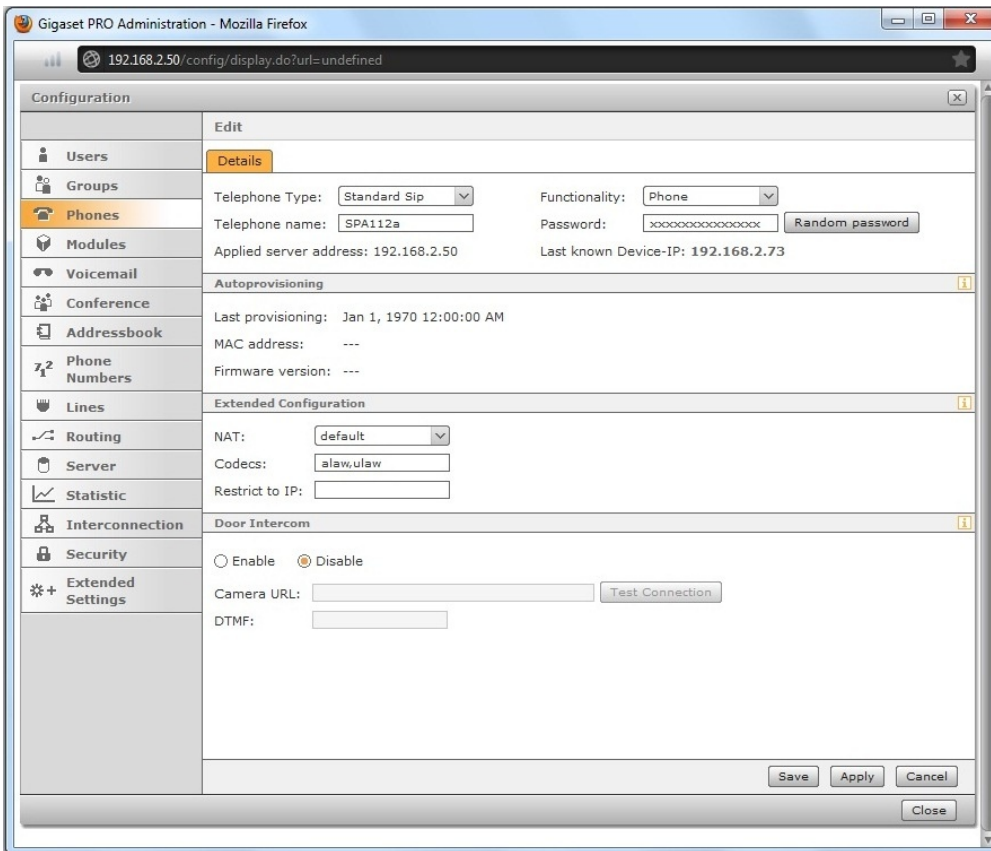
Cisco SPA112 2-Port Phone Adapter

This article will describe the configuration of the SPA112 behind the Gigaset T300/500 PBX system.

To guarantee a proper operation, please update the device first to the latest sw-version (V1.3.1, 05.02.2013).

The automatic (one-touch) setup is not supported with this device. If you want to use this mechanism, please use the Patton or Grandstream devices.

-
- For each analog port you have to create a new phone with "Standard Sip" at the PBX, for example SPA112a and SPA112b.



- Connect the Cisco SPA112 into the network, see instruction manual of the SPA112 how to do this.
- You need access to the Webinterface! Default username and password is 'admin'.
- Login and go to QUICK SETUP, insert the data from the previously created phones from the PBX.

© 2011 Cisco Systems, Inc. All Rights Reserved.

- The SPA112 will restart after clicking the "Submit" button. Now both ports will be registered at the PBX.
- Both devices are now configured at the PBX, you can assign USER and PHONE NUMBER.

Additional Information:

[External Link](#)

ATTENTION: No further support for this device from Gigaset!!!