

Maxwell 10 Display key

Introduction

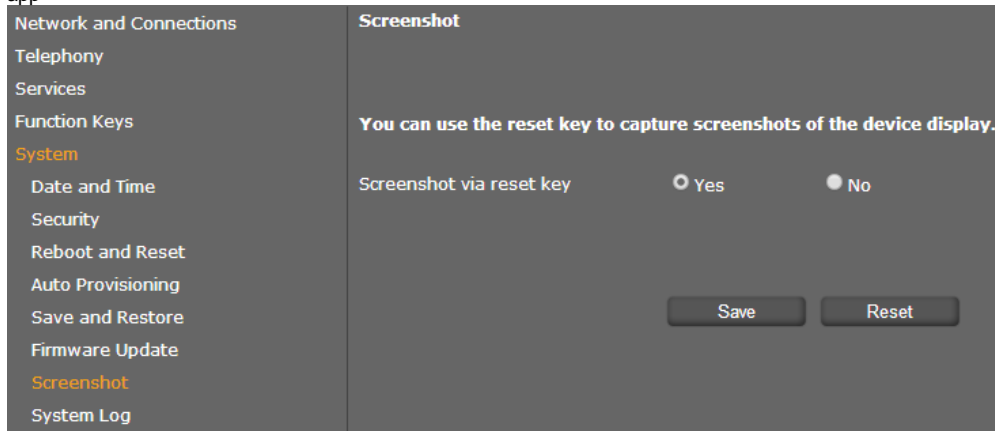
You can use the display key to switch the display on or off or to capture a screenshot of the display currently shown.

- **If the screenshot feature is activated:** A screenshot of the display currently shown is captured.
- **If the screenshot feature is not activated:** The display is switched on/off

The screenshot feature must be activated in the Web configurator.

Go to: **Settings - System - Screenshot:**

The Screenshots are stored in the Gallery app



The display key is located behind the right cover on the back side of the device.

Open the right cover on the back side of the device.

Press the display key.

