

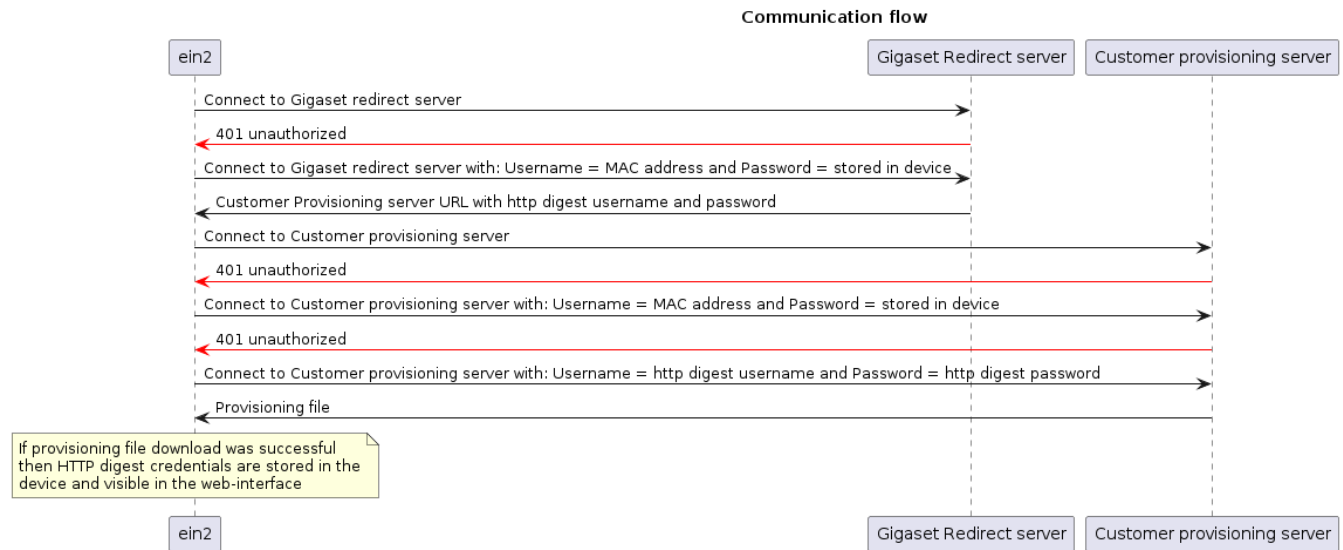
FAQ - Auto provisioning: HTTP Digest credentials via Redirect Server

Valid for: N610 N670 N870 N870E Embedded Integrator Virtual Integrator

Valid for N610 / N670 / N870 / N870E. Software 2.53 or higher is needed.

From software 2.53 or higher it is possible to add the HTTP digest credentials via the Gigaset Redirect server.

If the customer provisioning server has an HTTP digest security implemented, it allows you to add the HTTP digest credentials via the redirect server so that zero touch provisioning is working.



Redirect server URL format = `http(s)://<username>:<password>@URL`

Register	List Devices/Deregister
Register a single redirection data set to the Gigaset redirection database. MAC-ID, provision	
MAC-ID: 589EC62904F3- XXXXXXXXXX	
URL: <input type="text" value="http://digestuser:digestpassword@192.168.178.200/n870"/>	
Provider: <input type="text" value="gigasestest"/>	
<input type="button" value="Register"/>	
Registering succeeded	

- 👤 Network >
- 📶 Base stations >
- ☁️ Provider or PBX profiles
- 📱 Mobile devices >
- 📞 Telephony >
- 📖 Online directories >
- 🕒 Online services >
- ☰ System ▾
 - Web configurator
 - Licencing
 - Provisioning and configuration
 - Security

Certificates

Accept all certificates ? ☒ Yes ☐ No

HTTP Authentication

HTTP digest username ?

HTTP digest password ?