

# Maxwell 10 (Factory) Reset

## Introduction

All phone settings can be reset to the Factory Settings. This deletes all individual settings, lists and directory entries. Also all Android settings are back to the default. This could mean that 3rd party Apps have to be re-installed.

## Reset via web-interface

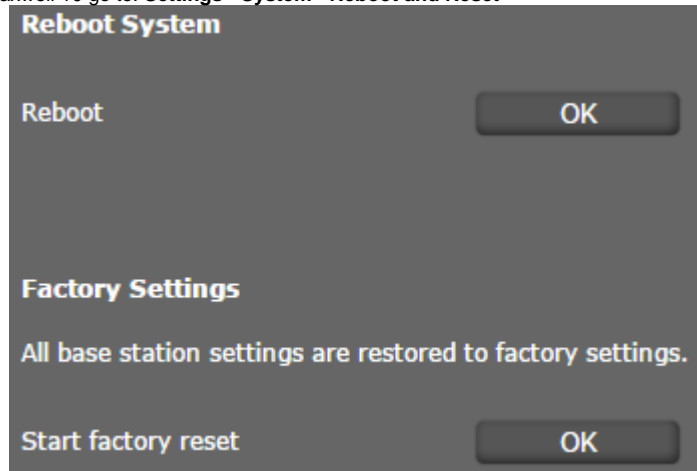
In the web-interface of the Maxwell 10 go to: **Settings - System - Reboot and Reset**

### Reboot:

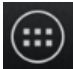

- Click on OK next to **Reboot** to reboot the system.

### Reset

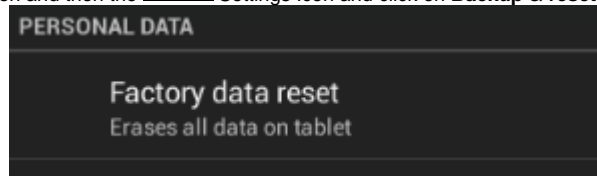
- Click on OK next to **Start factory reset** to reset the phone to factory condition.



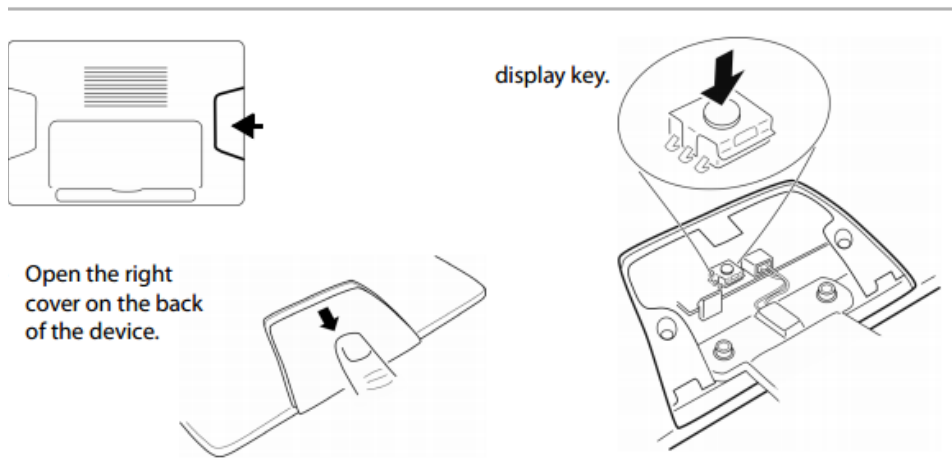
## Reset via Android Settings menu

On the Home page press the  icon and then the  Settings Icon and click on **Backup & reset**

- Click on **Factory data reset**



## Reset via reset button Back-side



During the Boot of the device press the display key, on the screen you will see the menu

**Press reset button to move highlight;**

**Press and hold reset button for 5 seconds to select.**

[Reboot system now](#)

[apply update from ADB](#)

[wipe data/factory reset <--- You should only use this option.](#)

[wipe cache partition](#)



**Please Note**

After the Factory Reset above, the device will then attempt to automatically download the latest official firmware from our servers by default.

- [Introduction](#)
  - [Reset via web-interface](#)
    - [Reboot:](#)
    - [Reset](#)
  - [Reset via Android Settings menu](#)
  - [Reset via reset button Back-side](#)