

Firmware N720 IP PRO

Firmware update Gigaset N720 IP

Out of the Box, the DECT manager does not know about the preferred base station software version and allows the start-up of the Base station with any software version.

Firmware				
Current firmware version of DECT Manager	70.073.00.030.02			
Available firmware version of DECT Manager	**.076.**.***.**			
Preferred firmware version of base stations	**.073.**.***.**			
Base station	Module	Current version	Operating days	Download status
Base station 1 - Drucker	1	71.073.00.000.00	289	OK
	2	71.073.00.000.00	289	OK
Base station 2 - Eingang	1	71.073.00.000.00	289	OK
	2	71.073.00.000.00	289	OK
Base station 3 - Warteschleife	1	71.073.00.000.00	289	OK
	2	71.073.00.000.00	289	OK
Base station 5 - Serverraum	1	71.073.00.000.00	288	OK

Status Page ->

Preferred Base station software == **.???**.***.***

To guarantee the up to date and compatible DECT manager and Base station software you need:

- Internet Access to Firmware update Packages at profile.gigaset.net
- Or the software package on a local http server
- Software update can only be done via the HTTP protocol. HTTPS is not supported. (N870 supports the HTTPS protocol also)

Check software version DECT Manager and Base station

The Software version of the DECT manager and the Base station should always be the same.

What happens if the Software version is different:

- It is possible the Base station does not start-up
 - **Status Page ->** Download Status == Failed
- System can be unstable

Automatic firmware update is not working

If the automatic firmware update is not working, you have the following possibilities.

A special module is made that download the files automatically from our Gigaset server and places the new files on the PBX, [click here](#).

1. Download the files from our wiki.
2. Connect to the PBX using SSH
 - a. Go to the directory:
[root@localhost ~]# cd /var/firmware/gigaset/original

Directory	sub-directory		Description
70	1	Copy new Baselines.bin and Firmware file	Firmware files DECT manager

71	1	Copy new Baselines.bin and Firmware file	Firmware files DECT base
----	---	--	--------------------------

3. N720 should now be able to see the new baseline 73

Because of auto provisioning, the Gigaset T300/T500 will change the Data Server field to his own IP address, the Firmware files could not be available on the T300/T500. You have to follow the following procedure.

T300/T500

1. Disable the Auto provisioning: Configuration - Phones - Settings - Deactivate auto provisioning.
2. Press Apply to Deactivate

N720

1. Change Data server URL:
Settings - Management - Firmware update - Data server to : profile.gigaset.net/device
2. Press **Set** to activate the new URL.
3. The device will now search for new Firmware on the Gigaset server.
4. When available, press **Update Firmware** to start Firmware update.

When all Devices are ready with the Firmware update, see Status Page.

T300/T500

1. Enable the Auto provisioning: Configuration - Phones - Settings - Activate auto provisioning.
2. Press Apply

N720

Restart the N720 so the T300/T500 can change the Data server back to the original value. Sometimes we see that due to network issues, the Base stations are not updated. For this a hidden firmware update page is available. To access this page:

- Login the WebGUI of the N720, then change the URL to:
- http://<IP address of N720>/hidden_firmware_update.html

You will see the screen below.

Base station	Current Firmware Version	Update	Firmware URL
Hal	71.065.00.000.00	<input type="checkbox"/>	
Kantoor	71.065.00.000.00	<input type="checkbox"/>	

Then enter the URL for the firmware update. **Always first update the DECT manager** and after successful update the Base station.

Use following links for

- [illegible]

Hint: For a newer software you can change the sw links. eg. Version 100

DECT Manager: http://profile.gigaset.net/device/70/1/einsteiniwu078_70.bin is http://profile.gigaset.net/device/70/1/einsteiniwu100_70.bin

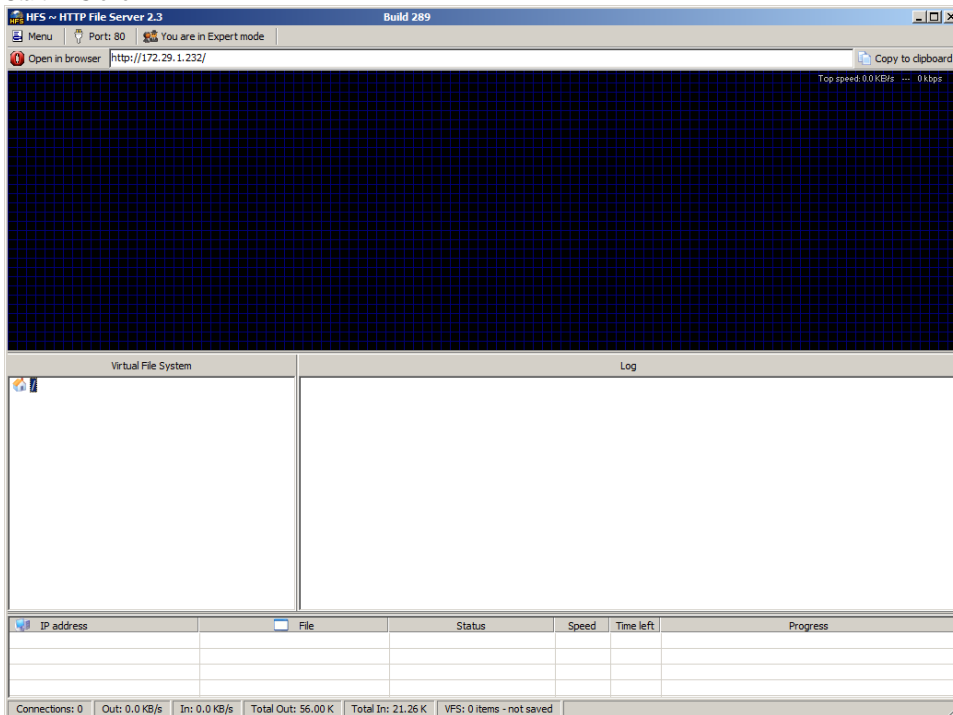
Satellite: [http://profile.gigaset.net/device/71/1/sat71**078**000000000.bin](http://profile.gigaset.net/device/71/1/sat71078000000000.bin) is [http://profile.gigaset.net/device/71/1/sat71**100**000000000.bin](http://profile.gigaset.net/device/71/1/sat71100000000000.bin)

If you have no internet access, you have to use an own http server, for this free tools are available like hfs.exe. With these tools you can use your laptop as the http server and insert the link towards your laptop. Sometimes N720IP installation doesn't have access to the Internet so update with Gigaset server is not possible. In this case you need to use your own local HTTP server for upgrade.



There are free HTTP servers available on the internet like: [HFS](#)

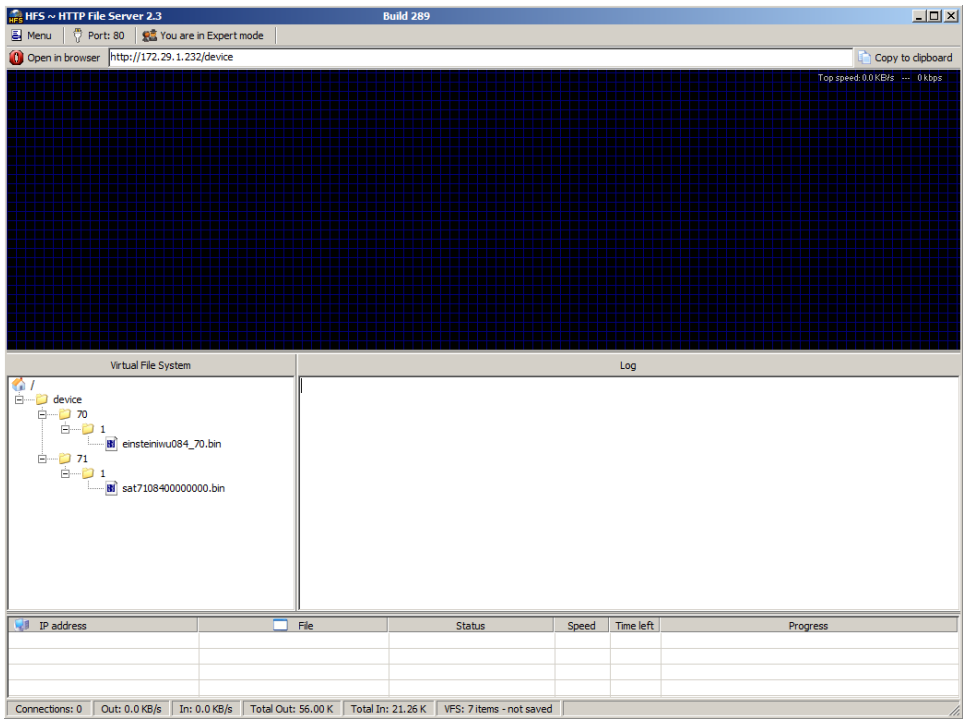
Procedure for update via hidden page:

1. Download the firmware files for N720 IP PRO -> [Get N720IP firmware](#)
2. Start **HFS.exe**



In this example server runs with IP: 172.29.1.232

-
- HFS ~ HTTP File Server 2.3 Build 289
- Menu Port: 80 You are in Expert mode
- Open in browser <http://172.29.1.232/> Copy to clipboard
- Top speed: 0.0 KB/s — 0 kbps
- Virtual File System
- What kind of folder do you want?
-  **Real folder** A real folder is faster, good for big folders
-  **Virtual folder** A virtual folder is easier, good for small folders
- ? Not sure?
Hint: most time you need real folders!
- | IP address | File | Status | Speed | Time left | Progress |
|------------|------|--------|-------|-----------|----------|
| | | | | | |
| | | | | | |
| | | | | | |
| | | | | | |
- Connections: 0 Out: 0.0 KB/s In: 0.0 KB/s Total Out: 56.00 K Total In: 21.26 K VFS: 0 items - not saved

[illegible]

4. Login the WebGUI of the N720, then change the URL to: `http://<IP address of N720>/hidden_firmware_update.html`

Gigaset N720-DM-PRO Log Off

Firmware Update for DECT Manager

Firmware URL

Update Firmware

Firmware Update for Base Stations

Base station	Current Firmware Version	Update	Firmware URL
Nitrogen 3.1	71.079.00.000.00	<input type="checkbox"/>	<input type="text"/>
Oxygen 3.11	71.079.00.000.00	<input type="checkbox"/>	<input type="text"/>
Ania's desk	71.079.00.000.00	<input type="checkbox"/>	<input type="text"/>
Phosphorus 2.2	71.079.00.000.00	<input type="checkbox"/>	<input type="text"/>
Base station 5	71.079.00.000.00	<input type="checkbox"/>	<input type="text"/>
Printer (chillout ro...	71.079.00.000.00	<input type="checkbox"/>	<input type="text"/>

Update Firmware

5. Copy firmware paths for DECT Manager & Base station (3) to the WebUI.

Download state is NOK

In case the download state shows "NOK" (see status page), i.e. after adding of new base station in the environment, the update job has been started again.

Settings --> Management --> Firmware Update)

- [Firmware update Gigaset N720 IP](#)
- [Check software version DECT Manager and Base station](#)
- [Automatic firmware update is not working](#)
- [Download state is NOK](#)

Software version 117

Download

Software version 116

Download

Software version 115

Download

Software version 113

Download
