

# FAQ Ringback and Early Media

## Introduction

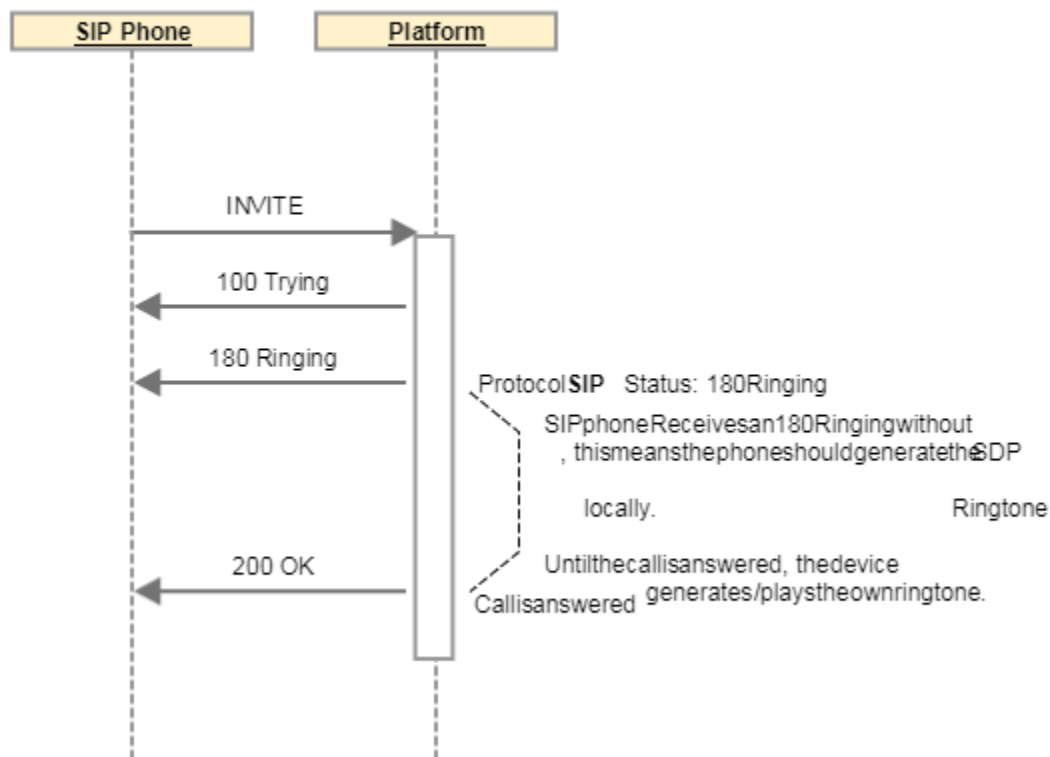
This page explains the Basic about how Ringback and Early media is working. Which ringing tone is played.

There are different options:

1. SIP phone is generating the ringtone locally (Platform sends 180 Ringing without SDP)
2. SIP phone plays the ringtone coming from the platform (Platform sends 180 Ringing with SDP)

SIP phone generates the ringtone locally.

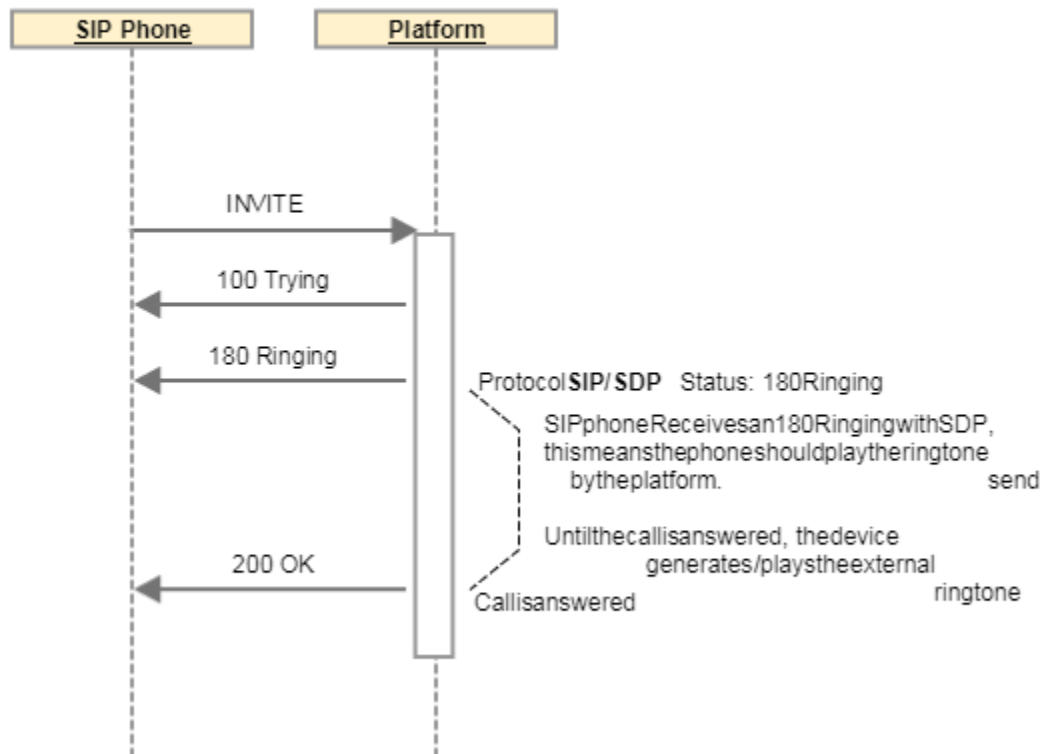
### LocalRingback



SIP phone plays the ringtone coming from the platform.

## RemoteRingback

---



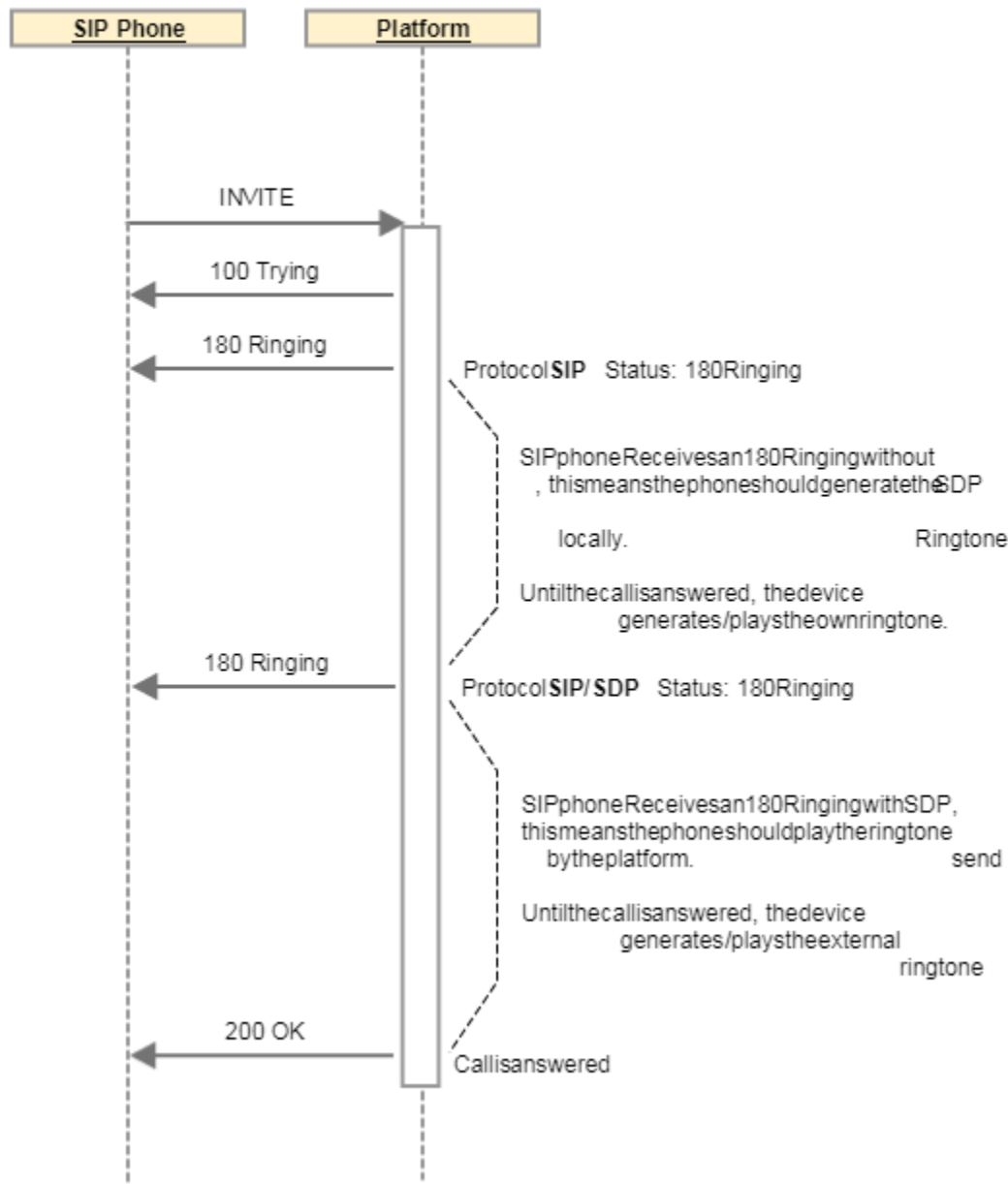
You can test this by disconnecting the LAN cable from the SIP phone, then the ringtone should stop.

## SIP phone receives Local Ringback, followed by Remote Ringback.

It can be that you dial a user that provides local ringback and this user is forwarded when no answer to another user that provides remote ringback.

1. SIP phone plays local ringtone.
2. SIP phone plays remote ringtone.

## LocalRingback, followedbyRemoteRingback



## SIP phone receives Remote Ringback, followed by Local Ringback.

It can be that you dial a user that provides local ringback and this user is forwarded when no answer to another user that provides remote ringback.

1. SIP phone plays remote ringtone.
2. SIP phone keeps playing the remote ringtone.

It is not supported that the device switches from a remote ringtone to a local ringtone.